

# TOWELRADS ETON



Crafted from high quality aluminium, this stylish Eton towel rail offers the ideal update for standard steel towel rails in your home. Offering all the aesthetics of a stainless-steel radiator, but with the added benefit of being lightweight, recyclable and providing heat 3-4 times quicker than stainless steel alternatives.

**Max working pressure:** 10bar  
Normal household pressure is well under 5 bar.



Manufacturers  
Warranty



Works with both central heating  
and electric fuel sources



Available in Anthracite  
and Brushed Aluminium

## FEATURES AND BENEFITS

- Manufactured in aluminium to give a fast response and excellent heat output.
- Available in stylish Brushed Aluminium finish or contemporary Anthracite textured finish.
- Suitable for any central heating system.
- Lightweight and resistant to corrosion.
- Oval shaped bars for added style.

## ETON ANTHRACITE

Height (mm)	Length (mm)	Pipe Centres (mm)	Product Code	Output at $\Delta T50k$	
				Watts	BTU
800	300	270	136060	205	699
	500	455	136066	342	1166
1000	300	270	136061	273	931
	500	455	136067	456	1555
1200	300	270	136062	324	1105
	500	455	136068	542	1851
1400	300	270	136063	376	1282
	500	455	136069	627	2139
1600	300	270	136064	461	1572
1800	300	270	136065	496	1692
	500	455	136081	822	2805

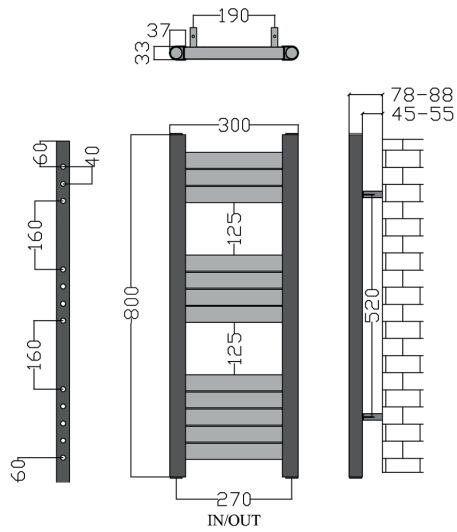
## ETON BRUSHED ALUMINIUM

Height (mm)	Length (mm)	Pipe Centres (mm)	Product Code	Output at $\Delta T50k$	
				Watts	BTU
800	300	270	136060	205	699
	500	455	136066	342	1166
1000	300	270	136061	273	931
	500	455	136067	456	1555
1200	300	270	136062	324	1105
	500	455	136068	542	1851
1400	300	270	136063	376	1282
	500	455	136069	627	2139
1600	300	270	136064	461	1572
1800	300	270	136065	496	1692
	500	455	136081	822	2805

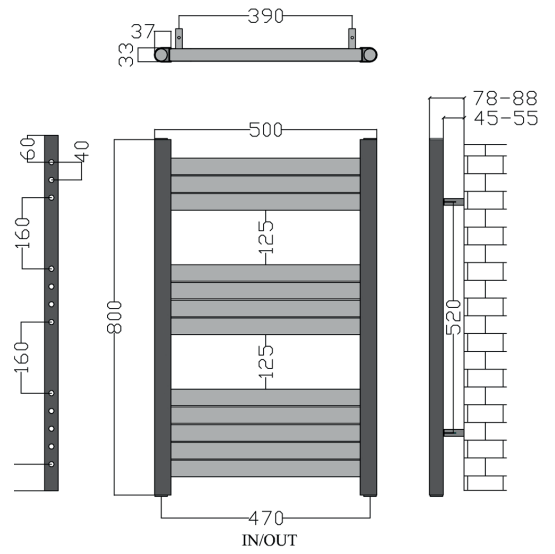
# TECHNICAL DIAGRAMS

## ETON COLLECTION

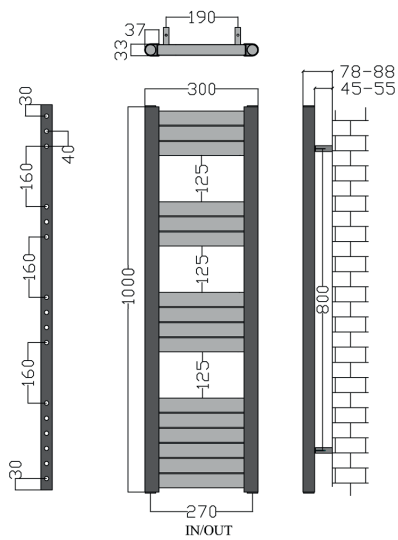
**800x300MM**  
CONFIGURATION



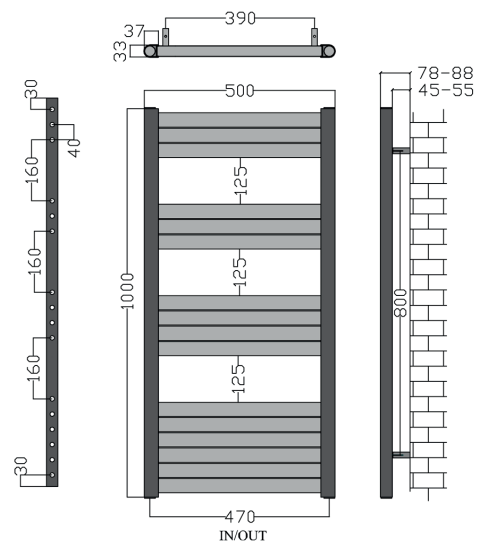
**800x500MM**  
CONFIGURATION



**1000x300MM**  
CONFIGURATION



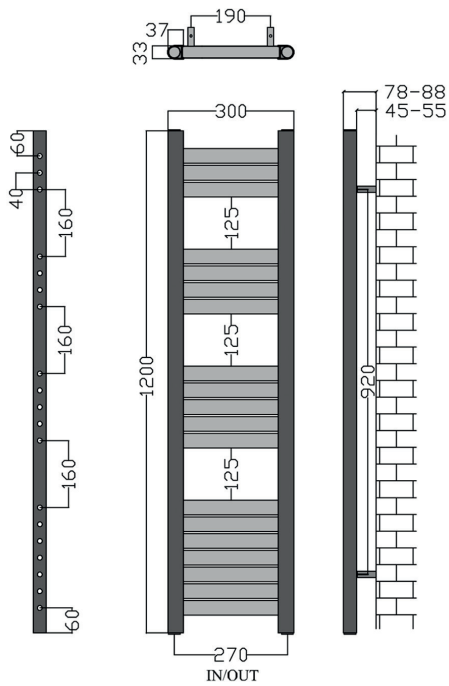
**1000x500MM**  
CONFIGURATION



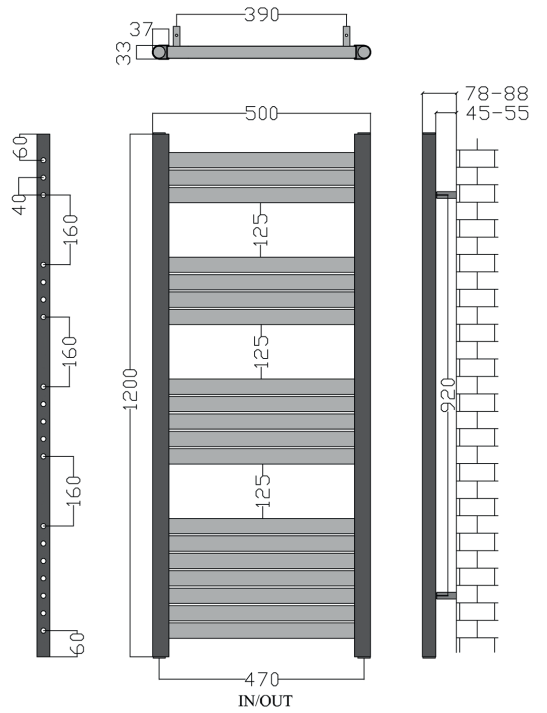
# TECHNICAL DIAGRAMS

## ETON COLLECTION

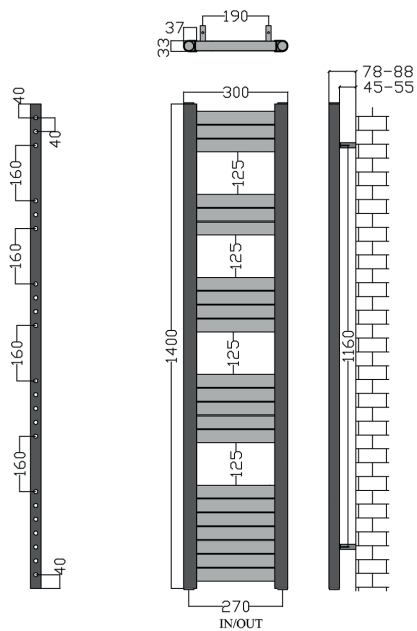
**1200x300MM**  
CONFIGURATION



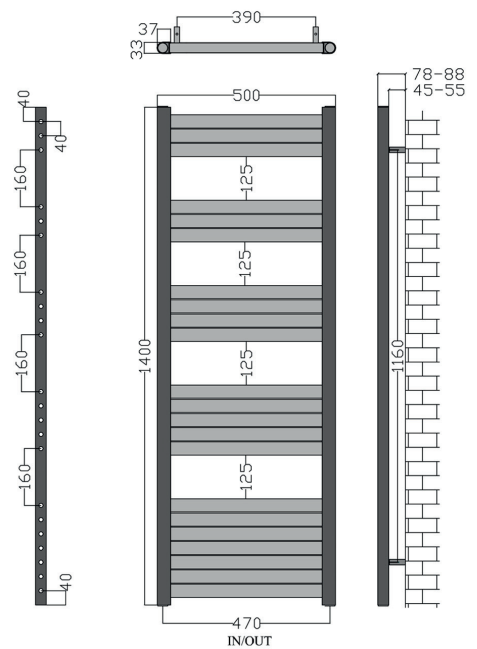
**1200x500MM**  
CONFIGURATION



**1400x300MM**  
CONFIGURATION



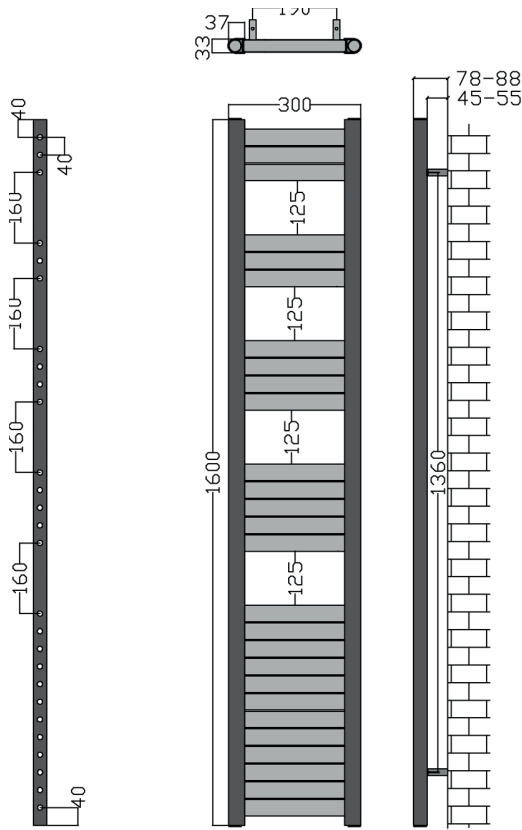
**1400x500MM**  
CONFIGURATION



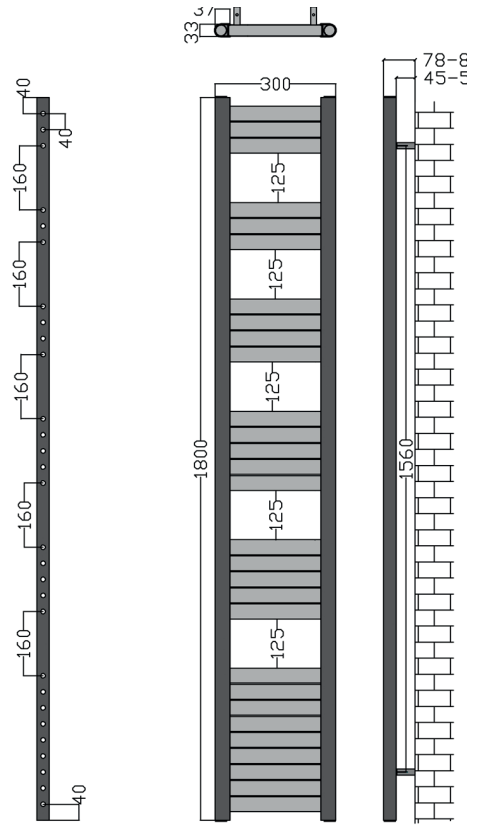
# TECHNICAL DIAGRAMS

## ETON COLLECTION

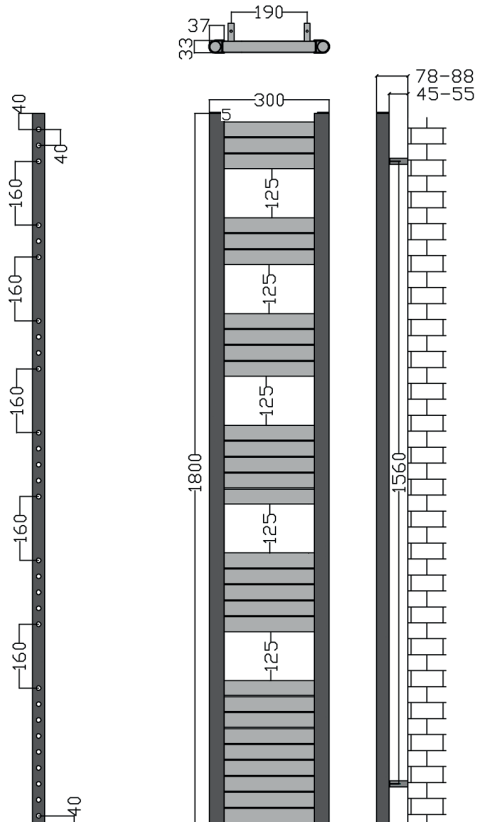
**1600x300MM**  
CONFIGURATION



**1800x300MM**  
CONFIGURATION



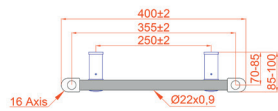
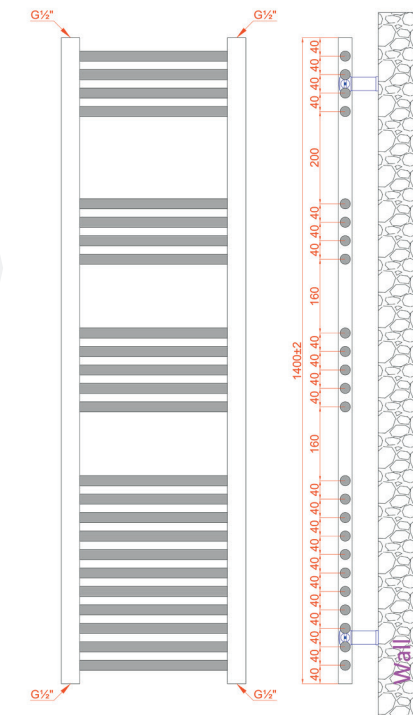
**1800x500MM**  
CONFIGURATION



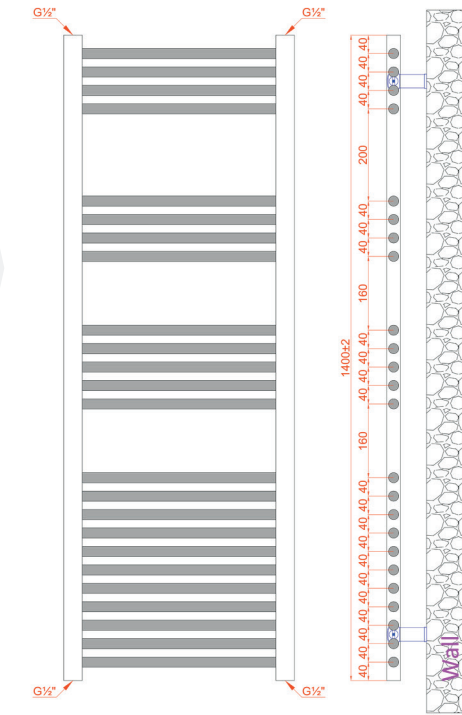
# TECHNICAL DIAGRAMS

## ETON COLLECTION

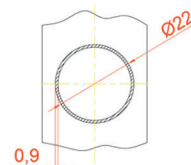
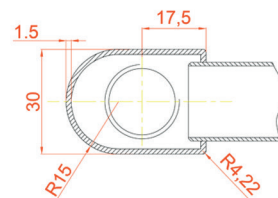
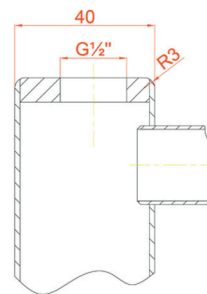
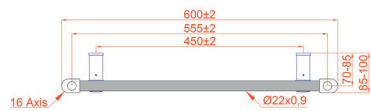
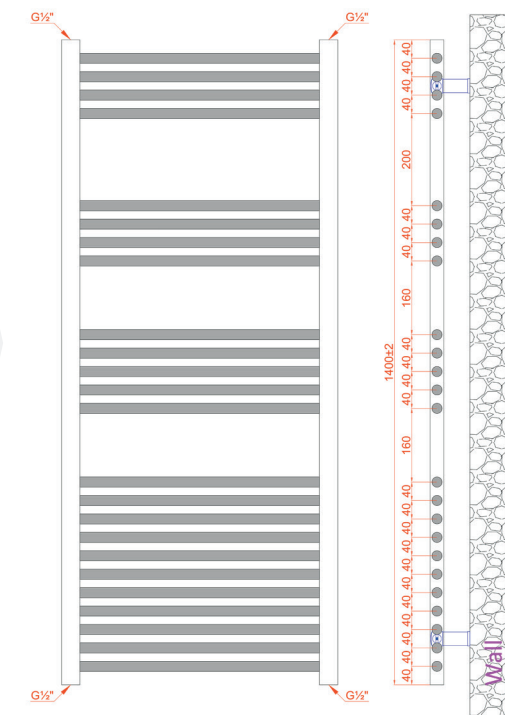
**1400x400MM**  
CONFIGURATION



**1400x500MM**  
CONFIGURATION



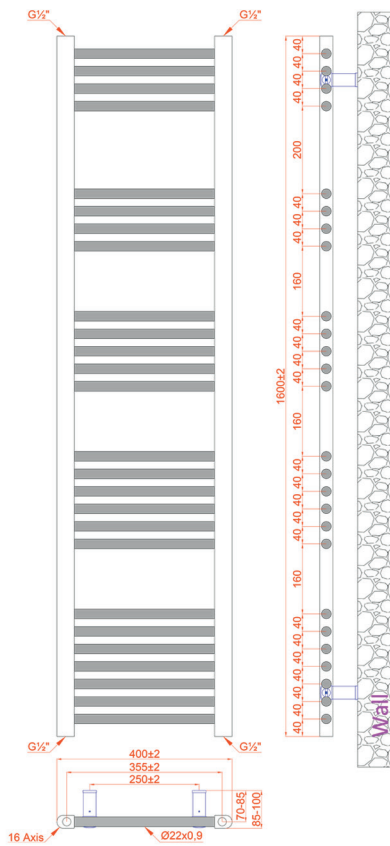
**1400x600MM**  
CONFIGURATION



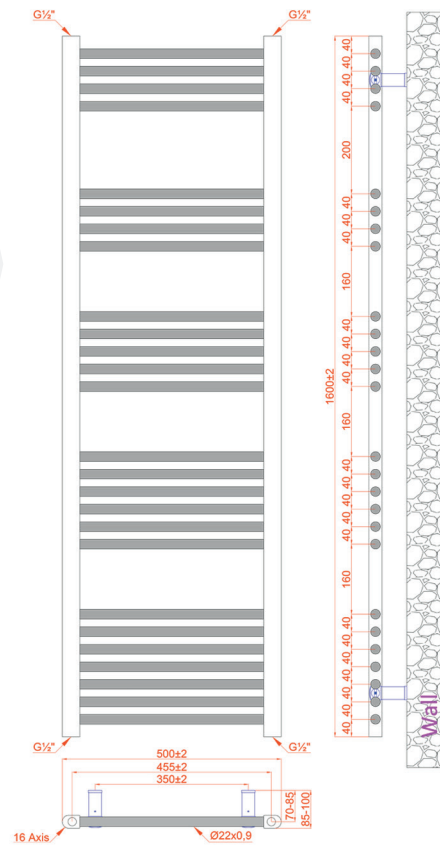
# TECHNICAL DIAGRAMS

## ETON COLLECTION

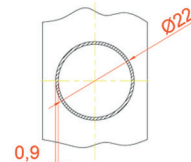
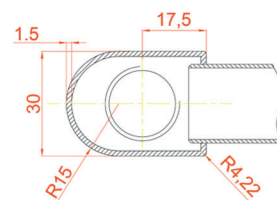
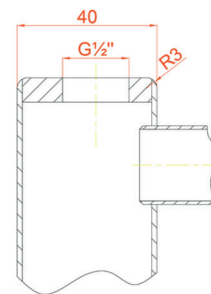
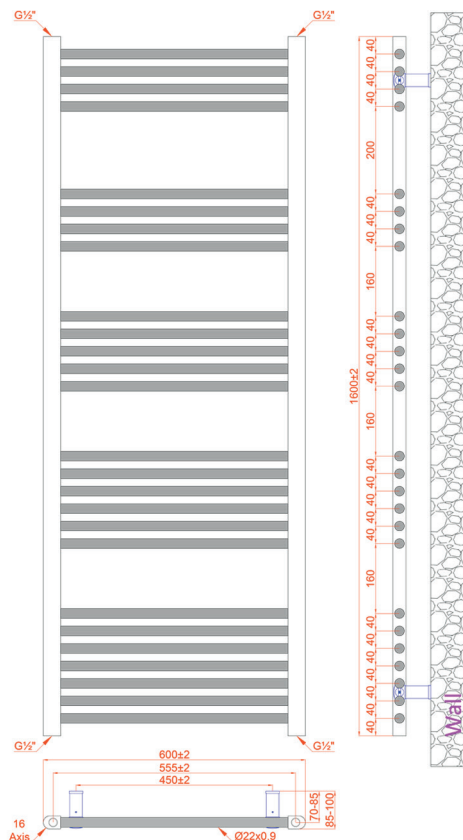
**1600x400MM**  
CONFIGURATION



**1600x500MM**  
CONFIGURATION



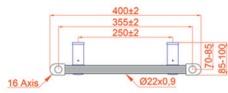
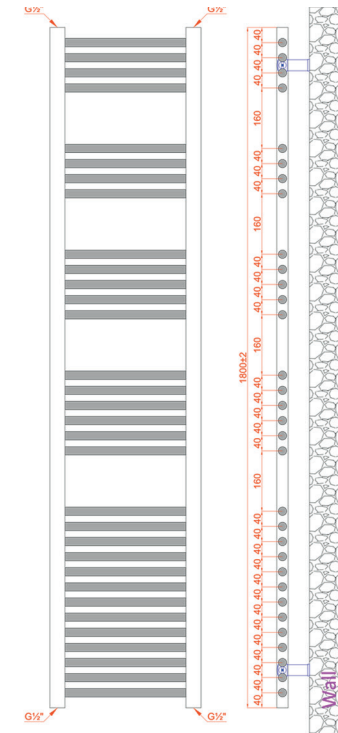
**1600x600MM**  
CONFIGURATION



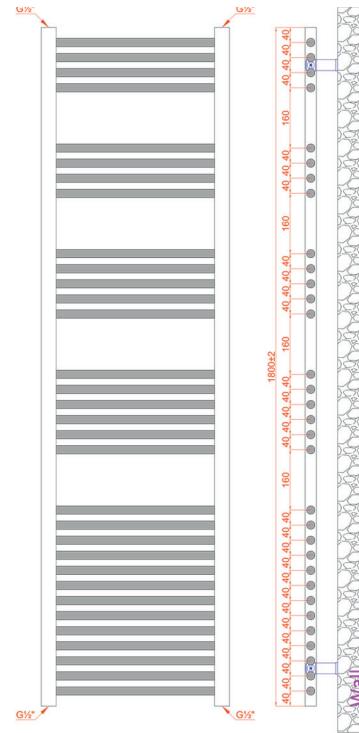
# TECHNICAL DIAGRAMS

## ETON COLLECTION

**1800x400MM**  
CONFIGURATION



**1800x500MM**  
CONFIGURATION



**1800x600MM**  
CONFIGURATION

