

TOWELRADS PISA LADDER RANGE



High Heat Output achieved by using 25mm bars.

Versatile, can be used on central heating or dual fuel systems.

For the full and extensive range of towel rails, elements and accessories please visit our website at www.towelrads.com.

Curved options available in white and chrome variants.

Max Working Pressure: 10 bar

Max Working Temp: 110 degrees C



Manufacturers
Warranty



Available in Chrome,
White, Black & Anthracite

FEATURES AND BENEFITS

- Classic ladder towel radiator for stylish, contemporary bathrooms
- Wide range of heights, widths and finishes available to suit any space
- 25mm bars give much better heat output than standard towel radiators with 19mm and 22mm tubes
- Curved towel radiators also available in this range
- An even higher output can be achieved by opting for one of our popular modern painted finishes
- Horizontal models also available to fit neatly under windows
- Can be connected to central heating or used with a dual fuel element for versatility
- Plenty of towel warming space

PISA WHITE STRAIGHT

Height	Length	Product Code	Projection	Pipe Centres	Weight KG	Water Content L	Output at ΔT_{30k}		Output at ΔT_{50k}		DF Max Imm Rate	n EXPO-NENT
							Watts	BTU	Watts	BTU		
800	400	160001	85-100mm	355	6	3.95	172	585	316	1078	200	1.22
	450	160002	85-100mm	405	6.7	4.31	190	647	349	1191	200	1.22
	500	160003	85-100mm	455	7.1	4.67	208	710	383	1307	300	1.22
	600	160004	85-100mm	555	7.9	5.39	245	836	451	1539	200	1.22
1200	400	160005	85-100mm	355	9.3	5.59	256	873	471	1607	300	1.23
	450	160006	85-100mm	405	8.95	6.07	284	967	522	1781	400	1.23
	500	160007	85-100mm	455	9.95	6.56	311	1060	572	1952	400	1.23
	600	160008	85-100mm	555	10.95	7.53	366	1247	673	2296	400	1.23
1500	400	160009	85-100mm	355	10.4	7.15	322	1097	592	2020	400	1.23
	450	160010	85-100mm	405	10.9	7.31	356	1214	655	2235	400	1.23
	500	160011	85-100mm	455	12.5	7.98	390	1330	718	2450	400	1.23
	600	160012	85-100mm	555	14.3	9.34	459	1565	845	2883	600	1.22
1800	400	160013	85-100mm	355	13.6	8.72	389	1327	716	2443	400	1.23
	450	160014	85-100mm	405	13.85	9.51	430	1467	792	2702	600	1.23
	500	160015	85-100mm	455	14.1	10.29	472	1610	869	2965	600	1.23
	600	160016	85-100mm	555	16.7	11.85	555	1892	1021	3484	800	1.23

PISA BLACK STRAIGHT

Height	Length	Product Code	Projection	Pipe Centres	Weight KG	Water Content L	Output at ΔT_{30k}		Output at ΔT_{50k}		DF Max Imm Rate	n EXPO-NENT
							Watts	BTU	Watts	BTU		
800	400	170001	85-100mm	355	6	3.95	172	585	316	1078	200	1.22
	500	170002	85-100mm	455	7.1	4.67	208	710	383	1307	300	1.22
	600	170003	85-100mm	555	7.9	5.39	245	836	451	1539	300	1.22
1200	400	170004	85-100mm	355	9.3	5.59	256	873	417	1607	300	1.23
	500	170005	85-100mm	455	9.95	6.56	311	1060	572	1952	400	1.23
	600	170006	85-100mm	555	10.95	7.53	366	1247	673	2296	400	1.23
1600	400	170007	85-100mm	355	11.65	7.63	344	1173	633	2160	400	1.23
	500	170008	85-100mm	455	12.75	8.98	417	1423	768	2620	600	1.23
	600	170009	85-100mm	555	14.8	10.34	491	1673	903	3081	600	1.23

PISA ANTHRACITE STRAIGHT

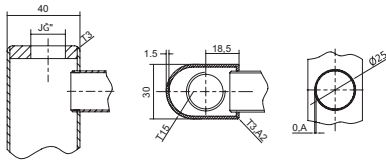
Height	Length	Product Code	Projection	Pipe Centres	Weight KG	Water Content L	Output at ΔT_{30k}		Output at ΔT_{50k}		DF Max Imm Rate	n EXPO-NENT
							Watts	BTU	Watts	BTU		
800	400	150001	85-100mm	355	6	3.95	172	585	316	1078	300	1.22
	500	150002	85-100mm	455	7.1	4.67	208	710	383	1307	400	1.22
	600	150003	85-100mm	555	7.9	5.39	245	836	451	1539	400	1.22
1200	400	150004	85-100mm	355	9.3	5.59	256	873	417	1607	300	1.23
	500	150005	85-100mm	455	9.95	6.56	311	1060	572	1952	400	1.23
	600	150006	85-100mm	555	10.95	7.53	366	1247	673	2296	400	1.23
1600	400	150007	85-100mm	355	11.65	7.63	344	1173	633	2160	400	1.23
	500	150008	85-100mm	455	12.75	8.98	417	1423	768	2620	600	1.23
	600	150009	85-100mm	555	14.8	10.34	491	1673	903	3081	600	1.23

PISA CHROME STRAIGHT

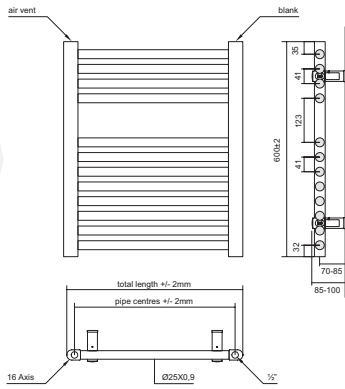
Height	Length	Product Code	Projection	Pipe Centres	Weight KG	Water Content L	Output at ΔT_{30k}		Output at ΔT_{50k}		DF Max Imm Rate	n EXPO-NENT
							Watts	BTU	Watts	BTU		
600	400	140001	85-100mm	355	4.4	2.86	96	328	177	604	200	1.20
	450	140002	85-100mm	405	4.85	3.12	109	370	200	682	200	1.20
	500	140003	85-100mm	455	5.8	3.37	121	411	222	757	200	1.21
	600	140004	85-100mm	555	6.4	3.88	145	493	266	908	200	1.22
800	300	140005	85-100mm	255	4.5	3.44	127	432	233	795	200	1.20
	400	140006	85-100mm	355	6	3.95	145	493	266	908	200	1.21
	450	140007	85-100mm	405	6.7	4.31	162	554	299	1020	200	1.21
	500	140008	85-100mm	455	7.1	4.67	180	615	332	1133	200	1.21
	600	140009	85-100mm	555	7.9	5.39	217	739	399	1361	300	1.22
	750	140010	85-100mm	705	8.8	6.47	271	925	499	1703	400	1.23
1000	400	140011	85-100mm	355	7.05	4.77	170	578	312	1065	200	1.21
	500	140012	85-100mm	455	8.5	5.61	211	721	389	1327	300	1.22
	600	140013	85-100mm	555	9.45	6.46	254	865	467	1593	300	1.23
1200	300	140014	85-100mm	255	7.4	4.61	139	474	256	873	200	1.23
	400	140015	85-100mm	355	9.3	5.59	186	634	342	1167	300	1.23
	450	140016	85-100mm	405	8.95	6.07	209	711	384	1310	300	1.23
	500	140017	85-100mm	455	9.95	6.56	232	791	427	1457	300	1.24
	600	140018	85-100mm	550	10.95	7.53	278	949	512	1747	400	1.24
	750	140019	85-100mm	705	13.4	8.99	348	1188	641	2187	400	1.25
1400	400	140020	85-100mm	355	9.8	6.68	225	767	414	1413	300	1.25
	450	140021	85-100mm	405	10.7	7.78	253	862	465	1587	300	1.25
	500	140022	85-100mm	455	11.4	7.86	281	958	517	1764	400	1.25
	600	140023	85-100mm	555	13.05	9.04	337	1148	620	2115	400	1.26
	750	140024	85-100mm	705	15.8	10.82	421	1436	775	2644	600	1.26
1600	300	140025	85-100mm	255	11.05	6.28	200	682	368	1256	300	1.26
	400	140026	85-100mm	355	11.65	7.63	266	908	490	1672	400	1.26
	450	140027	85-100mm	405	11.75	8.31	300	1022	552	1883	400	1.26
	500	140028	85-100mm	455	12.75	8.98	333	1136	613	2092	400	1.26
	600	140029	85-100mm	555	14.8	10.34	401	1367	738	2518	600	1.26
1800	300	140030	85-100mm	255	12.7	7.16	217	741	400	1356	300	1.28
	400	140031	85-100mm	355	13.6	8.72	289	986	532	1815	400	1.27
	450	140032	85-100mm	405	13.85	9.51	325	1110	599	2044	400	1.27
	500	140033	85-100mm	455	14.1	10.29	362	1234	666	2272	400	1.27
	600	140034	85-100mm	555	16.7	11.85	434	1480	799	2726	600	1.27
	750	140035	85-100mm	705	20.8	14.2	542	1849	998	3405	800	1.26

TECHNICAL DIAGRAMS

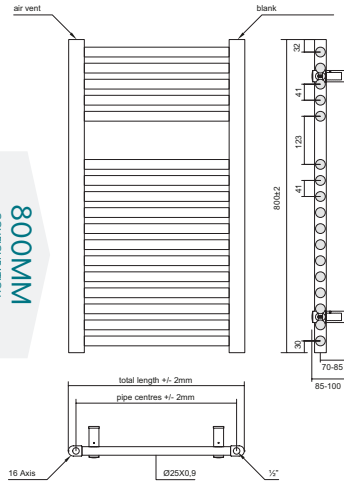
PISA LADDER COLLECTION



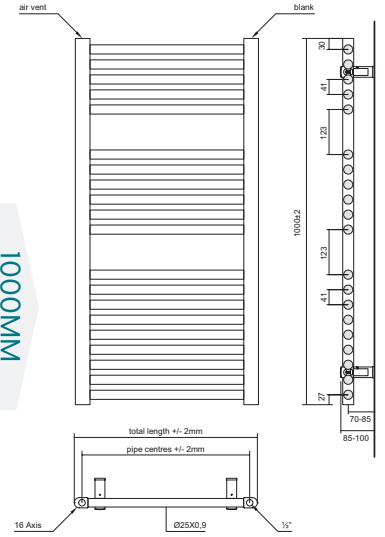
600MM
CONFIGURATION



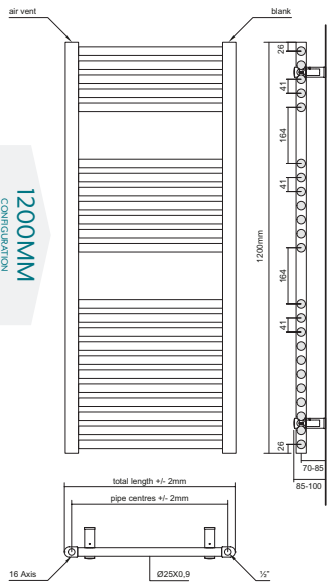
800MM
CONFIGURATION



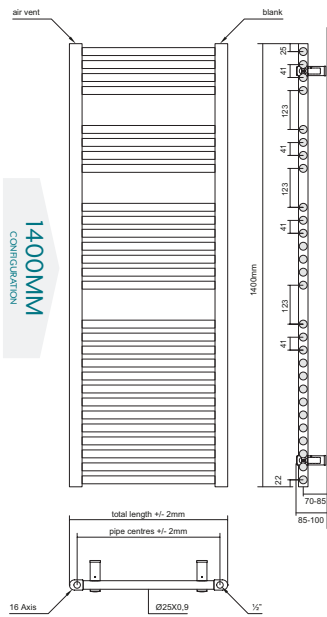
1000MM
CONFIGURATION



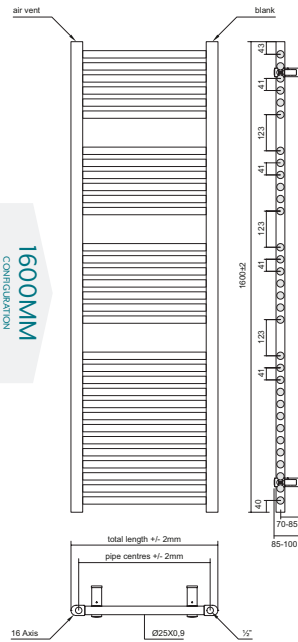
1200MM
CONFIGURATION



1400MM
CONFIGURATION



1600MM
CONFIGURATION



1800MM
CONFIGURATION

