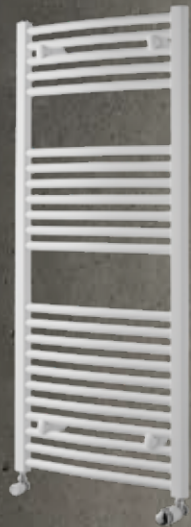


# THE TOWELRADS COMMERCIAL COLLECTION



**Towelrads**  
Part of the Brickability Group plc



# TOWELRADS COMMERCIAL RADIATOR COLLECTION



Towelrads are a market leading supplier of Bathroom Towel Rails and Designer Radiators to the UK construction industry offering an extensive range of products at highly competitive prices supported by fast, efficient and reliable service.

We are delighted to announce we now have available a range of products to expand our product offering to service the UK commercial sector as well as our existing Housing developer client base.

Building on the success of our Industry leading towel rail business we have taken the seamless step of introducing an extensive range of premium radiators to our portfolio offering you, the client, an extensive range of high quality Premium Panel Radiator products supported by our existing service levels.



Paul Hamilton  
Managing Director

Towelrads has successfully grown its business over the past 15 years becoming a brand leader in the supply of towel rails and designer radiators to the UK construction market. This has allowed us to provide a fantastic service to our customers. We now feel, with our expertise in personel and our UK wide knowledge, it is now the time to offer our customers the complete heating solution from design to supply of premium panels.



## THE TOWERADS TEAM

Here at Towelrads we feel we have the industry leading sales team when it comes to knowledge and understanding of the Radiator and Towel Rail market with years of knowledge and experience in our marketplace. Please find listed below our external sales team and their areas of responsibility and relevant contact details, we would be delighted to hear from you and deal with your enquiry.



Calum Walsh  
National Sales Director  
T: 07794 324 075  
calum@towelrads.com



Mark Currie  
National Specification Director  
T: 07734 073 113  
mark@towelrads.com



Jamie Warren  
Business Development Director  
T: 07702 509 135  
jamiew@towelrads.com



Iain Gillies  
Regional Sales Manager  
T: 07702 509 137  
iain@towelrads.com



Shaun Bates  
Regional Sales Manager  
T: 07734 695 799  
shaun@towelrads.com



Mick Rowlands  
Regional Sales Manager  
T: 07734 695 765  
mickr@towelrads.com



Andy Pate  
Regional Sales Manager  
T: 07718 115 427  
andy@towelrads.com



Chris Ridge  
Regional Sales Manager  
T: 07500 978 802  
chris@towelrads.com



Ben Kneller  
Regional Sales Manager  
T: 07921 480 416  
ben@towelrads.com

# CONTENTS

PAGE  
22

WINDSOR MULTICOLUMN  
RADIATOR COLLECTION

PAGE  
32

ULTRA LST COLLECTION

PAGE  
6

TOWELRADS COMPACT

PAGE  
14

FLAT PANEL COLLECTION

PAGE  
18

FLAT LINED PANEL COLLECTION

PAGE  
36

PISA LADDER COLLECTION

PAGE  
44

VALVE & ELEMENTS OPTIONS

PAGE  
42

TOWELRADS  
EXTENSIVE RANGE



## TOWELRADS COMPACT

The Towelrads Compact Radiators are simple and elegant in design, offering a heating solution for a wide range of spaces. From the space saving 300mm x 500mm size, which is perfect for an ensuite bathroom or cloakroom, to the largest 700 x 3000mm offering suitable heat outputs for the most demanding requirement.

- FEATURES AND BENEFITS:**
- Broad range includes T11, T21, T22 and T33 models giving enhanced heat output in any application
  - Mounted top and side covers create an elegant design
  - Wide choice of heights and widths to suit any space
  - Easy installation
  - High quality finish in White RAL 9016
  - Reinforced packaging with bubble wrap, protective corner protectors and side covers



Available in White RAL 9016 as standard. Other RAL options available on request.

**OPTIONS**

**VALVE OPTIONS**  
Please see page 44-45 for our full range of appropriate valve styles.

SEE PAGE 44-45



# TECHNICAL SPECIFICATIONS

## COMPACT SINGLE AND DOUBLE CONVECTOR COLLECTION

### COMPACT - T11 SINGLE

| Height | Length | Product Code | Weight KG | Water Content | Output at $\Delta T_{30k}$ |       | Output at $\Delta T_{50k}$ |       |
|--------|--------|--------------|-----------|---------------|----------------------------|-------|----------------------------|-------|
|        |        |              |           |               | Watts                      | BTU   | Watts                      | BTU   |
| 300    | 500    | 600064       | 4.5       | 0.85          | 132                        | 451   | 253                        | 862   |
|        | 800    | 600065       | 7.1       | 1.36          | 212                        | 722   | 404                        | 1,379 |
|        | 1000   | 600066       | 8.9       | 1.7           | 265                        | 903   | 505                        | 1,723 |
|        | 1200   | 600067       | 10.7      | 2.04          | 318                        | 1,084 | 606                        | 2,068 |
|        | 1600   | 610017       | 14.2      | 2.72          | 423                        | 1,445 | 808                        | 2,757 |
|        | 1800   | 610018       | 16.0      | 3.06          | 476                        | 1,625 | 909                        | 3,102 |
|        | 2000   | 610019       | 17.8      | 3.4           | 529                        | 1,806 | 1,010                      | 3,446 |
|        | 3000   | 610020       | 26.7      | 5.1           | 794                        | 2,709 | 1,515                      | 5,169 |
| 400    | 400    | 600001       | 4.4       | 0.88          | 135                        | 461   | 258                        | 880   |
|        | 500    | 610021       | 5.5       | 1.1           | 169                        | 576   | 323                        | 1,100 |
|        | 600    | 600002       | 6.6       | 1.32          | 203                        | 692   | 387                        | 1,320 |
|        | 700    | 600092       | 7.7       | 1.54          | 237                        | 807   | 452                        | 1,541 |
|        | 800    | 600003       | 8.8       | 1.76          | 270                        | 922   | 516                        | 1,761 |
|        | 900    | 610022       | 9.9       | 1.98          | 304                        | 1,038 | 581                        | 1,981 |
|        | 1000   | 600004       | 11.0      | 2.2           | 338                        | 1,153 | 645                        | 2,201 |
|        | 1200   | 600005       | 13.2      | 2.64          | 405                        | 1,383 | 774                        | 2,641 |
|        | 1400   | 610023       | 15.4      | 3.08          | 473                        | 1,614 | 903                        | 3,081 |
|        | 1600   | 610024       | 17.6      | 3.52          | 541                        | 1,845 | 1,032                      | 3,521 |
|        | 1800   | 610025       | 19.8      | 3.96          | 608                        | 2,075 | 1,161                      | 3,961 |
|        | 2000   | 610026       | 22.0      | 4.4           | 676                        | 2,306 | 1,290                      | 4,402 |
|        | 2600   | 610027       | 28.6      | 5.72          | 878                        | 2,998 | 1,677                      | 5,722 |
|        | 3000   | 610028       | 33.0      | 6.6           | 1,014                      | 3,459 | 1,935                      | 6,602 |
| 500    | 400    | 600006       | 5.2       | 1.04          | 163                        | 555   | 311                        | 1,060 |
|        | 500    | 600007       | 6.5       | 1.3           | 203                        | 694   | 389                        | 1,326 |
|        | 600    | 600008       | 7.8       | 1.56          | 244                        | 833   | 466                        | 1,591 |
|        | 700    | 610029       | 9.1       | 1.82          | 285                        | 972   | 544                        | 1,856 |
|        | 800    | 600009       | 10.4      | 2.08          | 326                        | 1,111 | 622                        | 2,121 |
|        | 900    | 600010       | 11.7      | 2.34          | 366                        | 1,250 | 699                        | 2,386 |
|        | 1000   | 600011       | 13.0      | 2.6           | 407                        | 1,388 | 777                        | 2,651 |
|        | 1200   | 600012       | 15.6      | 3.12          | 488                        | 1,666 | 932                        | 3,181 |
|        | 1400   | 600013       | 18.2      | 3.64          | 570                        | 1,944 | 1,088                      | 3,712 |
|        | 1600   | 610030       | 20.8      | 4.16          | 651                        | 2,221 | 1,243                      | 4,242 |
|        | 1800   | 610031       | 23.4      | 4.68          | 732                        | 2,499 | 1,399                      | 4,772 |
|        | 2000   | 610032       | 26.0      | 5.2           | 814                        | 2,777 | 1,554                      | 5,302 |
|        | 2600   | 610033       | 33.8      | 6.76          | 1,058                      | 3,610 | 2,020                      | 6,893 |
|        | 3000   | 610034       | 39.0      | 7.8           | 1,221                      | 4,165 | 2,331                      | 7,954 |

### COMPACT - T11 SINGLE

| Height | Length | Product Code | Weight KG | Water Content | Output at $\Delta T_{30k}$ |       | Output at $\Delta T_{50k}$ |        |
|--------|--------|--------------|-----------|---------------|----------------------------|-------|----------------------------|--------|
|        |        |              |           |               | Watts                      | BTU   | Watts                      | BTU    |
| 600    | 400    | 600014       | 6.1       | 1.2           | 188                        | 643   | 360                        | 1,228  |
|        | 500    | 600015       | 7.7       | 1.5           | 236                        | 804   | 450                        | 1,535  |
|        | 600    | 600016       | 9.2       | 1.8           | 283                        | 965   | 540                        | 1,843  |
|        | 700    | 600043       | 10.8      | 2.1           | 330                        | 1,125 | 630                        | 2,150  |
|        | 800    | 600017       | 12.3      | 2.4           | 377                        | 1,286 | 720                        | 2,457  |
|        | 900    | 600018       | 13.8      | 2.7           | 424                        | 1,447 | 810                        | 2,764  |
|        | 1000   | 600019       | 15.4      | 3             | 471                        | 1,608 | 900                        | 3,071  |
|        | 1200   | 600020       | 18.5      | 3.6           | 565                        | 1,929 | 1,080                      | 3,685  |
|        | 1400   | 600021       | 21.5      | 4.2           | 660                        | 2,251 | 1,260                      | 4,299  |
|        | 1600   | 600080       | 24.6      | 4.8           | 754                        | 2,572 | 1,440                      | 4,913  |
|        | 1800   | 610035       | 27.7      | 5.4           | 848                        | 2,894 | 1,620                      | 5,528  |
|        | 2000   | 610036       | 30.8      | 6             | 942                        | 3,215 | 1,800                      | 6,142  |
|        | 2600   | 610037       | 40.0      | 7.8           | 1,225                      | 4,180 | 2,340                      | 7,984  |
|        | 3000   | 610038       | 46.2      | 9             | 1,413                      | 4,823 | 2,700                      | 9,213  |
| 700    | 400    | 610039       | 7.0       | 1.44          | 213                        | 725   | 406                        | 1,387  |
|        | 500    | 600068       | 8.7       | 1.8           | 266                        | 907   | 508                        | 1,733  |
|        | 600    | 610040       | 10.5      | 2.16          | 319                        | 1,088 | 610                        | 2,080  |
|        | 800    | 600069       | 14.0      | 2.88          | 425                        | 1,451 | 813                        | 2,773  |
|        | 1000   | 600070       | 17.5      | 3.6           | 532                        | 1,814 | 1,016                      | 3,467  |
|        | 1200   | 600071       | 21.0      | 4.32          | 638                        | 2,176 | 1,219                      | 4,160  |
|        | 1400   | 610041       | 24.5      | 5.04          | 744                        | 2,539 | 1,422                      | 4,853  |
|        | 1600   | 610042       | 28.1      | 5.76          | 850                        | 2,902 | 1,626                      | 5,547  |
|        | 1800   | 610043       | 31.6      | 6.48          | 957                        | 3,265 | 1,829                      | 6,240  |
|        | 2000   | 610044       | 35.1      | 7.2           | 1,063                      | 3,627 | 2,032                      | 6,933  |
|        | 2600   | 610045       | 45.6      | 9.36          | 1,382                      | 4,716 | 2,642                      | 9,014  |
|        | 3000   | 610046       | 52.6      | 10.8          | 1,595                      | 5,441 | 3,048                      | 10,400 |

Stocked
  To order

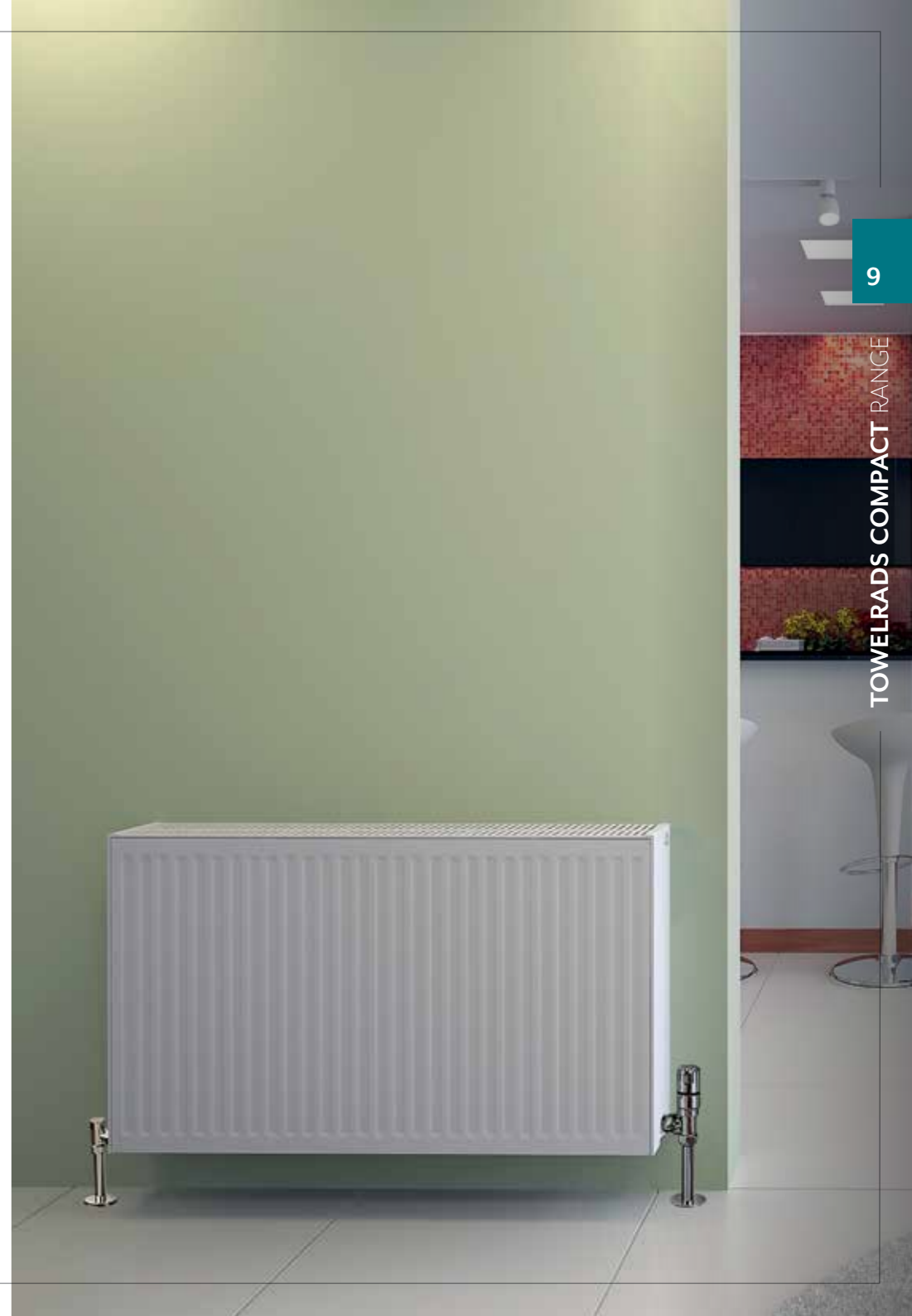
**Test Pressure: 13 bar**  
**Max Working Pressure: 10 bar**  
**Max Working Temp: 110 degrees C**

Supplied with Industry leading robust packaging consisting of Bubble Wrap and Reinforced plastic protective corners.

Heights up to 900mm and Lengths up to 3000mm in Type 11, 22 and 33 available for select projects - price on application.

### COMPACT - T21P+

| Height | Length | Product Code | Weight KG | Water Content | Output at $\Delta T_{30k}$ |       | Output at $\Delta T_{50k}$ |       |       |
|--------|--------|--------------|-----------|---------------|----------------------------|-------|----------------------------|-------|-------|
|        |        |              |           |               | Watts                      | BTU   | Watts                      | BTU   |       |
| 300    | 500    | 610047       | 7.2       | 1.7           | 199                        | 680   | 382                        | 1,303 |       |
|        | 1000   | 610048       | 14.5      | 3.4           | 399                        | 1,360 | 764                        | 2,607 |       |
|        | 1600   | 610049       | 23.2      | 5.44          | 638                        | 2,177 | 1,222                      | 4,171 |       |
|        | 2000   | 610050       | 29.0      | 6.8           | 797                        | 2,721 | 1,528                      | 5,214 |       |
|        | 3000   | 610051       | 43.4      | 10.2          | 1,196                      | 4,081 | 2,292                      | 7,821 |       |
| 400    | 400    | 610052       | 7.2       | 1.68          | 200                        | 682   | 385                        | 1,313 |       |
|        | 500    | 610053       | 9.0       | 2.1           | 250                        | 853   | 481                        | 1,641 |       |
|        | 600    | 610054       | 10.7      | 2.52          | 300                        | 1,023 | 577                        | 1,969 |       |
|        | 800    | 610055       | 14.3      | 3.36          | 400                        | 1,364 | 770                        | 2,626 |       |
|        | 1000   | 610056       | 17.9      | 4.2           | 500                        | 1,705 | 962                        | 3,282 |       |
|        | 1200   | 610057       | 21.4      | 5.04          | 600                        | 2,046 | 1,154                      | 3,939 |       |
|        | 1400   | 610058       | 25.0      | 5.88          | 700                        | 2,387 | 1,347                      | 4,595 |       |
|        | 1600   | 610059       | 28.5      | 6.72          | 800                        | 2,729 | 1,539                      | 5,252 |       |
|        | 1800   | 610060       | 32.1      | 7.56          | 900                        | 3,070 | 1,732                      | 5,908 |       |
|        | 2000   | 610061       | 35.6      | 8.4           | 1,000                      | 3,411 | 1,924                      | 6,565 |       |
|        | 2600   | 610062       | 46.3      | 10.92         | 1,299                      | 4,434 | 2,501                      | 8,534 |       |
|        | 3000   | 610063       | 53.4      | 12.6          | 1,499                      | 5,116 | 2,886                      | 9,847 |       |
|        | 500    | 400          | 610064    | 10.7          | 2.04                       | 238   | 813                        | 461   | 1,572 |
|        |        | 600          | 610065    | 16.0          | 3.06                       | 357   | 1,220                      | 691   | 2,358 |
| 800    |        | 610066       | 21.3      | 4.08          | 477                        | 1,626 | 922                        | 3,145 |       |
| 1000   |        | 610067       | 26.7      | 5.1           | 596                        | 2,033 | 1,152                      | 3,931 |       |
| 1200   |        | 610068       | 32.0      | 6.12          | 715                        | 2,439 | 1,382                      | 4,717 |       |
| 1400   |        | 610069       | 37.4      | 7.14          | 834                        | 2,846 | 1,613                      | 5,503 |       |
| 1600   |        | 610070       | 42.7      | 8.16          | 953                        | 3,253 | 1,843                      | 6,289 |       |
| 1800   |        | 610071       | 48.0      | 9.18          | 1,072                      | 3,659 | 2,074                      | 7,075 |       |
| 2000   |        | 610072       | 53.4      | 10.2          | 1,192                      | 4,066 | 2,304                      | 7,862 |       |
| 600    |        | 400          | 610073    | 11.3          | 2.4                        | 275   | 940                        | 535   | 1,825 |
| 600    | 600    | 600082       | 17.0      | 3.6           | 413                        | 1,409 | 802                        | 2,737 |       |
|        | 800    | 600084       | 22.6      | 4.8           | 551                        | 1,879 | 1,070                      | 3,650 |       |
|        | 1000   | 600081       | 28.3      | 6             | 688                        | 2,349 | 1,337                      | 4,562 |       |
|        | 1200   | 600086       | 33.9      | 7.2           | 826                        | 2,819 | 1,604                      | 5,474 |       |
|        | 1400   | 610074       | 39.6      | 8.4           | 964                        | 3,288 | 1,872                      | 6,387 |       |
|        | 1600   | 600054       | 45.2      | 9.6           | 1,101                      | 3,758 | 2,139                      | 7,299 |       |
|        | 1800   | 610075       | 50.9      | 10.8          | 1,239                      | 4,228 | 2,407                      | 8,212 |       |
|        | 2000   | 610076       | 56.6      | 12            | 1,377                      | 4,698 | 2,674                      | 9,124 |       |
|        | 700    | 400          | 610077    | 12.7          | 2.88                       | 312   | 1,063                      | 607   | 2,072 |
|        | 600    | 610078       | 19.0      | 4.32          | 468                        | 1,595 | 911                        | 3,108 |       |
| 800    | 610079 | 25.3         | 5.76      | 623           | 2,127                      | 1,214 | 4,144                      |       |       |
| 1000   | 610080 | 31.7         | 7.2       | 779           | 2,659                      | 1,518 | 5,180                      |       |       |
| 1200   | 610081 | 38.0         | 8.64      | 935           | 3,190                      | 1,822 | 6,216                      |       |       |
| 1400   | 610082 | 44.3         | 10.08     | 1,091         | 3,722                      | 2,125 | 7,251                      |       |       |
| 1600   | 610083 | 50.7         | 11.52     | 1,247         | 4,254                      | 2,429 | 8,287                      |       |       |
| 1800   | 610084 | 57.0         | 12.96     | 1,403         | 4,786                      | 2,732 | 9,323                      |       |       |
| 2000   | 610085 | 63.4         | 14.4      | 1,558         | 5,317                      | 3,036 | 10,359                     |       |       |



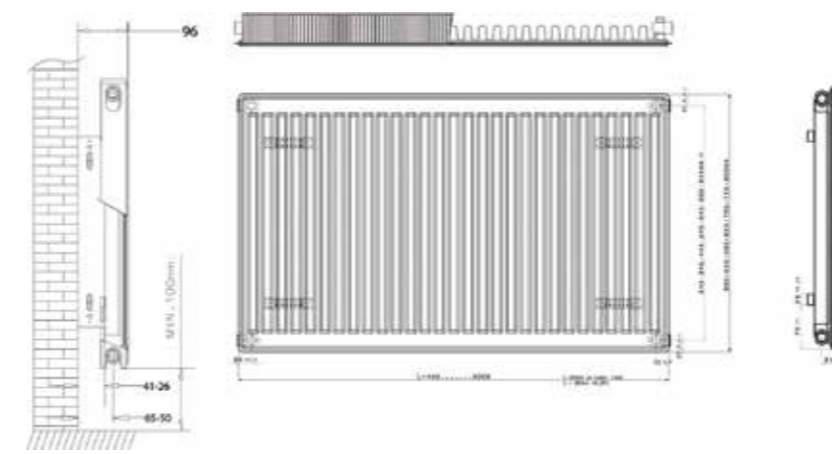




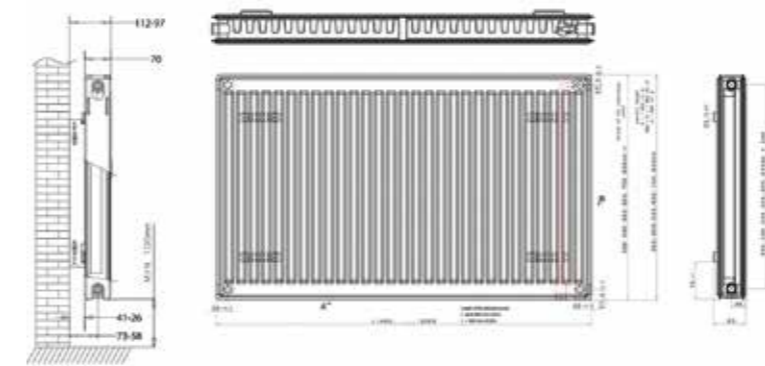
# TECHNICAL DIAGRAMS

## COMPACT SINGLE AND DOUBLE CONVECTOR COLLECTION

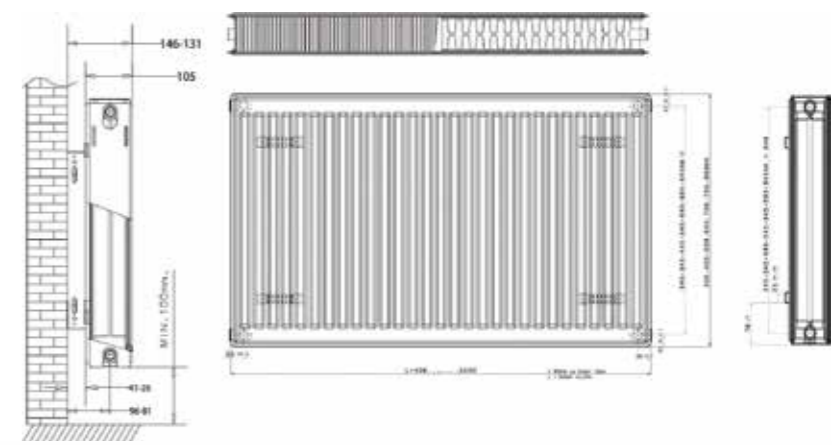
TYPE 11



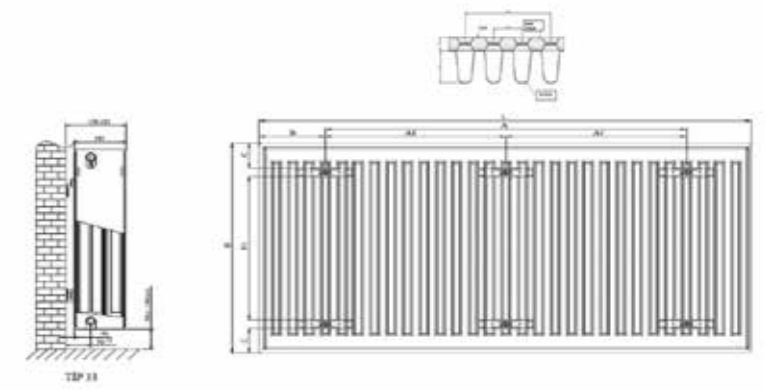
TYPE 21



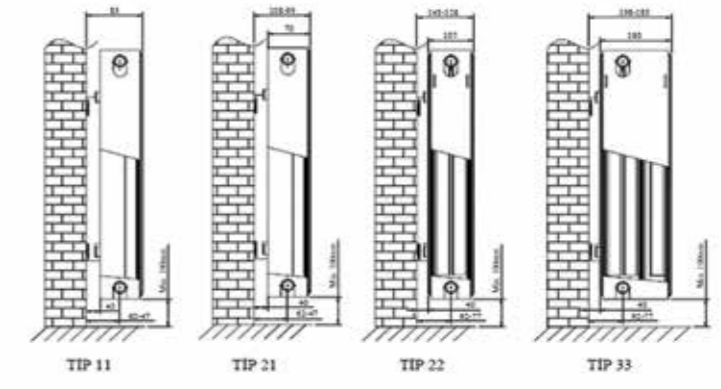
TYPE 22



TYPE 33



WALL ASSEMBLY DIMENSIONS





## FLAT PANEL COLLECTION

The Flat Panel radiator range offer a modern stylish upgrade from the traditional compact radiator whilst withstanding external corrosion twice as long as the standard compact product. The flat panel radiators are lightweight and slim line in appearance making them suitable for all rooms in the home or office.

- Withstands external corrosion for twice as long a standard finishes.
- Alternative sizes available in Type 11, Type 21, Type 22 and Type 33.
- Steel radiator finished in white (RAL 9016).
- Other RAL Options available.



10  
YEARS  
MANUFACTURERS  
WARRANTY



CENTRAL  
HEATING



FREE NEXT  
DAY DELIVERY



Available in White  
RAL 9016 as standard.  
Other RAL options  
available on request.

## TECHNICAL SPECIFICATIONS FLAT PANEL COLLECTION

Heights available up to 900mm, lengths up to 3000mm.

Type 11, Type 21, Type 22 & Type 33 also available - Price on application.

### FLAT PANEL - T11 SINGLE

| Height | Length | Product Code | Weight KG | Water Content | Output at $\Delta T_{30k}$ |       | Output at $\Delta T_{50k}$ |       |
|--------|--------|--------------|-----------|---------------|----------------------------|-------|----------------------------|-------|
|        |        |              |           |               | Watts                      | BTU   | Watts                      | BTU   |
| 300    | 400    | 610191       | 27.5      | 0.6           | 97                         | 330   | 182                        | 621   |
|        | 600    | 610192       | 30.9      | 0.9           | 146                        | 497   | 272                        | 931   |
|        | 800    | 610193       | 27.5      | 1.2           | 195                        | 665   | 363                        | 1242  |
|        | 1000   | 610194       | 30.9      | 1.5           | 244                        | 832   | 454                        | 1552  |
|        | 1200   | 610195       | 27.5      | 1.8           | 293                        | 999   | 545                        | 1863  |
|        | 1400   | 610196       | 30.9      | 2.1           | 342                        | 1166  | 636                        | 2173  |
|        | 1600   | 610197       | 27.5      | 2.4           | 391                        | 1333  | 727                        | 2484  |
|        | 1800   | 610198       | 30.9      | 2.7           | 439                        | 1497  | 818                        | 2794  |
| 2000   | 610199 | 34.1         | 3.0       | 488           | 1664                       | 909   | 3105                       |       |
| 500    | 400    | 610200       | 8.3       | 1.0           | 146                        | 497   | 273                        | 932   |
|        | 600    | 610201       | 11.5      | 1.5           | 218                        | 745   | 410                        | 1,398 |
|        | 800    | 610202       | 14.7      | 2.0           | 291                        | 993   | 547                        | 1,864 |
|        | 1000   | 610203       | 17.9      | 2.5           | 364                        | 1,241 | 683                        | 2,330 |
|        | 1200   | 610204       | 21.1      | 3.0           | 437                        | 1,490 | 820                        | 2,795 |
|        | 1400   | 610205       | 24.3      | 3.5           | 510                        | 1,738 | 956                        | 3,261 |
|        | 1600   | 610206       | 27.5      | 4.0           | 582                        | 1,986 | 1093                       | 3,727 |
|        | 1800   | 610207       | 30.9      | 4.5           | 655                        | 2,234 | 1230                       | 4,193 |
| 2000   | 610208 | 34.1         | 5.0       | 728           | 2,483                      | 1366  | 4,659                      |       |
| 600    | 400    | 610209       | 9.7       | 1.2           | 166                        | 567   | 314                        | 1,070 |
|        | 600    | 610210       | 13.7      | 1.8           | 249                        | 850   | 470                        | 1,604 |
|        | 800    | 610211       | 17.6      | 2.4           | 332                        | 1,133 | 627                        | 2,139 |
|        | 1000   | 610212       | 21.6      | 3.0           | 415                        | 1,416 | 784                        | 2,674 |
|        | 1200   | 610213       | 25.5      | 3.6           | 499                        | 1,700 | 941                        | 3,209 |
|        | 1400   | 610214       | 29.4      | 4.2           | 582                        | 1,983 | 1098                       | 3,744 |
|        | 1600   | 610215       | 33.4      | 4.8           | 665                        | 2,266 | 1255                       | 4,278 |
|        | 1800   | 610216       | 37.6      | 5.4           | 748                        | 2,549 | 1411                       | 4,813 |
| 2000   | 610217 | 41.5         | 6.0       | 831           | 2,833                      | 1568  | 5,348                      |       |



Stocked



To order

**Max Working Pressure:** 10 bar  
**Max Working Temp:** 110 degrees C

### FLAT PANEL - T22 DOUBLE

| Height | Length | Product Code | Weight KG | Water Content | Output at $\Delta T_{30k}$ |       | Output at $\Delta T_{50k}$ |        |
|--------|--------|--------------|-----------|---------------|----------------------------|-------|----------------------------|--------|
|        |        |              |           |               | Watts                      | BTU   | Watts                      | BTU    |
| 300    | 500    | 610218       | 9.6       | 1.5           | 237                        | 809   | 451                        | 1,537  |
|        | 1000   | 610219       | 17.8      | 3.0           | 474                        | 1,617 | 901                        | 3,074  |
|        | 1400   | 610220       | 27.6      | 4.8           | 759                        | 2,588 | 1261                       | 4,919  |
|        | 2000   | 610221       | 34.3      | 6.0           | 949                        | 3,235 | 1803                       | 6,149  |
| 400    | 500    | 610222       | 13.0      | 2.0           | 324                        | 1,019 | 569                        | 1,942  |
|        | 600    | 610223       | 15.2      | 2.4           | 358                        | 1,223 | 683                        | 2,331  |
|        | 800    | 610224       | 19.7      | 3.2           | 478                        | 1,631 | 940                        | 3,108  |
|        | 1000   | 610225       | 24.0      | 4.0           | 598                        | 2,039 | 1,139                      | 3,885  |
|        | 1200   | 610226       | 28.4      | 4.8           | 717                        | 2,446 | 1,366                      | 4,662  |
|        | 1400   | 610227       | 32.8      | 5.6           | 836                        | 2,854 | 1,595                      | 5,439  |
|        | 1600   | 610228       | 37.2      | 6.4           | 956                        | 3,262 | 1,822                      | 6,216  |
|        | 1800   | 610229       | 41.8      | 7.2           | 1076                       | 3,670 | 2,050                      | 6,993  |
| 2000   | 610230 | 46.2         | 8.0       | 1195          | 4,077                      | 2,277 | 7,770                      |        |
| 500    | 400    | 610231       | 13.3      | 2.0           | 286                        | 975   | 546                        | 1,863  |
|        | 600    | 610232       | 18.7      | 3.0           | 429                        | 1,463 | 820                        | 2,795  |
|        | 800    | 610233       | 24.3      | 4.0           | 572                        | 1,950 | 1093                       | 3,726  |
|        | 1000   | 610234       | 29.8      | 5.0           | 715                        | 2,438 | 1366                       | 4,658  |
|        | 1200   | 610235       | 35.2      | 6.0           | 858                        | 2,926 | 1639                       | 5,589  |
|        | 1400   | 610236       | 43.4      | 7.0           | 1001                       | 3,413 | 1912                       | 6,521  |
|        | 1600   | 610237       | 46.2      | 8.0           | 1144                       | 3,901 | 2185                       | 7,452  |
| 1800   | 610238 | 51.9         | 9.0       | 1287          | 4,389                      | 2459  | 8,384                      |        |
| 2000   | 610239 | 57.5         | 10.0      | 1430          | 4,876                      | 2732  | 9,315                      |        |
| 600    | 400    | 610240       | 15.6      | 2.4           | 331                        | 1,128 | 634                        | 2,161  |
|        | 600    | 610241       | 22.3      | 3.6           | 496                        | 1,692 | 950                        | 3,241  |
|        | 800    | 610242       | 29.0      | 4.8           | 662                        | 2,256 | 1267                       | 4,321  |
|        | 1000   | 610243       | 35.6      | 6.0           | 827                        | 2,820 | 1584                       | 5,402  |
|        | 1200   | 610244       | 42.3      | 7.2           | 992                        | 3,384 | 1901                       | 6,482  |
|        | 1400   | 610245       | 48.9      | 8.4           | 1158                       | 3,948 | 2218                       | 7,562  |
|        | 1600   | 610246       | 55.7      | 9.6           | 1323                       | 4,512 | 2534                       | 8,642  |
|        | 1800   | 610247       | 62.6      | 10.8          | 1489                       | 5,077 | 2851                       | 9,723  |
| 2000   | 610248 | 69.3         | 12.0      | 1654          | 5,641                      | 3168  | 10,803                     |        |
| 700    | 500    | 610249       | 22.7      | 3.3           | 467                        | 1489  | 897                        | 3,061  |
|        | 600    | 610250       | 26.7      | 3.9           | 561                        | 1,911 | 1,076                      | 3,673  |
|        | 800    | 610251       | 34.7      | 5.3           | 746                        | 2,547 | 1,436                      | 4,898  |
|        | 1000   | 610252       | 42.7      | 6.7           | 933                        | 3,184 | 1,794                      | 6,122  |
|        | 1200   | 610253       | 50.7      | 8.1           | 1120                       | 3,821 | 2,153                      | 7,346  |
|        | 1400   | 610254       | 58.6      | 9.5           | 1307                       | 4,458 | 2,512                      | 8,571  |
|        | 1600   | 610255       | 66.7      | 10.8          | 1493                       | 5,095 | 2,871                      | 9,795  |
|        | 1800   | 610256       | 75.0      | 12.2          | 1680                       | 5,732 | 3,230                      | 11,020 |
| 2000   | 610257 | 83.1         | 13.6      | 1867          | 6,369                      | 3,589 | 12,244                     |        |





VERTICAL FLAT PANEL RANGE

FLAT PANEL - P10

| Height | Length | Product Code | Weight KG | Water Content | Output at ΔT30k |       | Output at ΔT50k |       |
|--------|--------|--------------|-----------|---------------|-----------------|-------|-----------------|-------|
|        |        |              |           |               | Watts           | BTU   | Watts           | BTU   |
| 1600   | 400    | 600150       | 19.9      | 3.7           | 265             | 906   | 509             | 1,737 |
| 1800   |        | 600151       | 22.3      | 4.2           | 299             | 1,019 | 573             | 1,955 |
| 2000   |        | 600152       | 24.8      | 4.6           | 332             | 1,132 | 636             | 2,172 |
| 2200   |        | 600153       | 27.3      | 5.1           | 365             | 1,245 | 700             | 2,389 |
| 1600   | 500    | 600154       | 23.3      | 4.6           | 318             | 1,084 | 608             | 2,075 |
| 1800   |        | 600155       | 26.2      | 5.1           | 357             | 1,219 | 684             | 2,335 |
| 2000   |        | 600156       | 29.1      | 5.7           | 397             | 1,355 | 760             | 2,594 |
| 2200   |        | 600157       | 32.0      | 6.3           | 437             | 1,490 | 836             | 2,854 |
| 1600   | 600    | 600158       | 25.3      | 5.4           | 370             | 1,263 | 707             | 2,414 |
| 1800   |        | 600159       | 28.5      | 6.1           | 416             | 1,421 | 796             | 2,715 |
| 2000   |        | 600160       | 31.6      | 6.8           | 463             | 1,579 | 884             | 3,017 |
| 2200   |        | 600161       | 34.8      | 7.5           | 509             | 1,737 | 973             | 3,319 |

VERTICAL FLAT PANEL RANGE

FLAT PANEL - P20

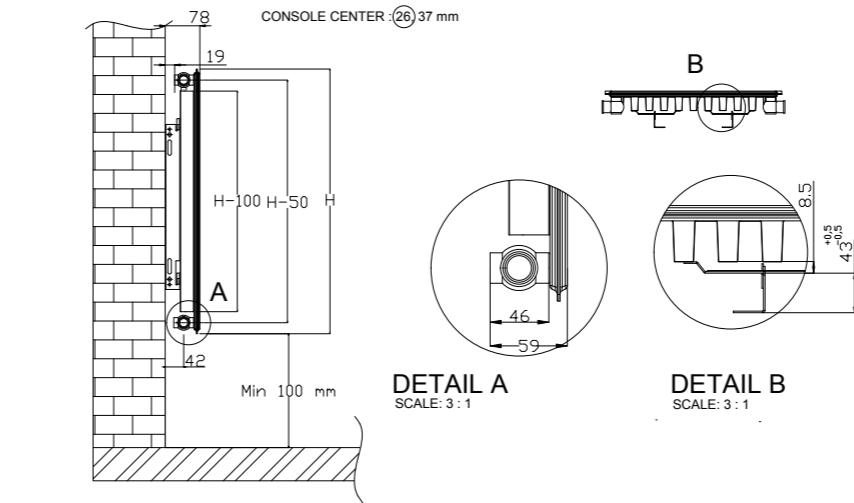
| Height | Length | Product Code | Weight KG | Water Content | Output at ΔT30k |       | Output at ΔT50k |       |
|--------|--------|--------------|-----------|---------------|-----------------|-------|-----------------|-------|
|        |        |              |           |               | Watts           | BTU   | Watts           | BTU   |
| 1600   | 400    | 600162       | 30.7      | 7.7           | 460             | 1,571 | 885             | 3,020 |
| 1800   |        | 600163       | 34.5      | 8.6           | 518             | 1,767 | 996             | 3,398 |
| 2000   |        | 600164       | 38.4      | 9.6           | 575             | 1,963 | 1,106           | 3,775 |
| 2200   |        | 600165       | 42.2      | 10.5          | 633             | 2,160 | 1,217           | 4,153 |
| 1600   | 500    | 600166       | 45.2      | 9.3           | 552             | 1,883 | 1,061           | 3,621 |
| 1800   |        | 600167       | 50.9      | 10.4          | 621             | 2,118 | 1,194           | 4,074 |
| 2000   |        | 600168       | 56.5      | 11.6          | 690             | 2,354 | 1,327           | 4,526 |
| 2200   |        | 600169       | 62.1      | 12.7          | 759             | 2,589 | 1,459           | 4,979 |
| 1600   | 600    | 600170       | 47.9      | 10.7          | 640             | 2,183 | 1,230           | 4,197 |
| 1800   |        | 600171       | 53.9      | 12.1          | 720             | 2,455 | 1,384           | 4,722 |
| 2000   |        | 600172       | 59.9      | 13.4          | 800             | 2,728 | 1,538           | 5,246 |
| 2200   |        | 600173       | 65.8      | 14.7          | 880             | 3,001 | 1,691           | 5,771 |



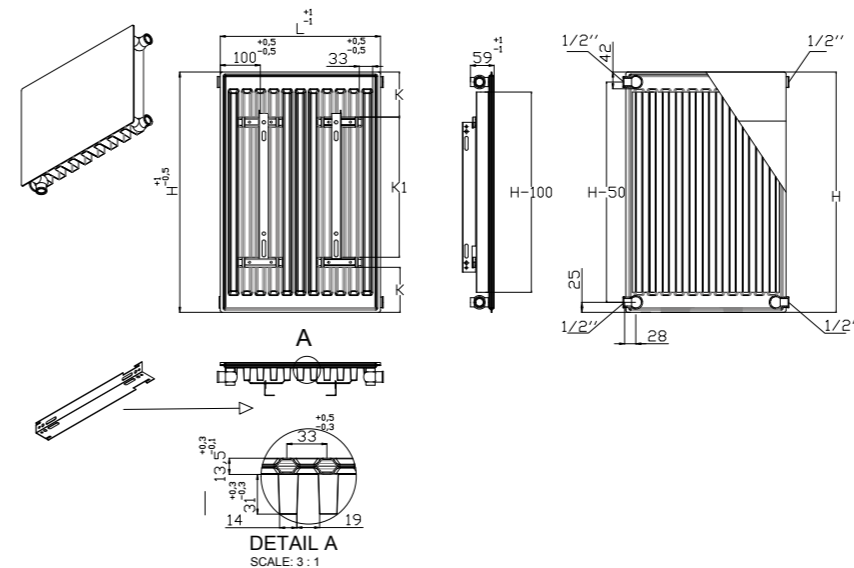
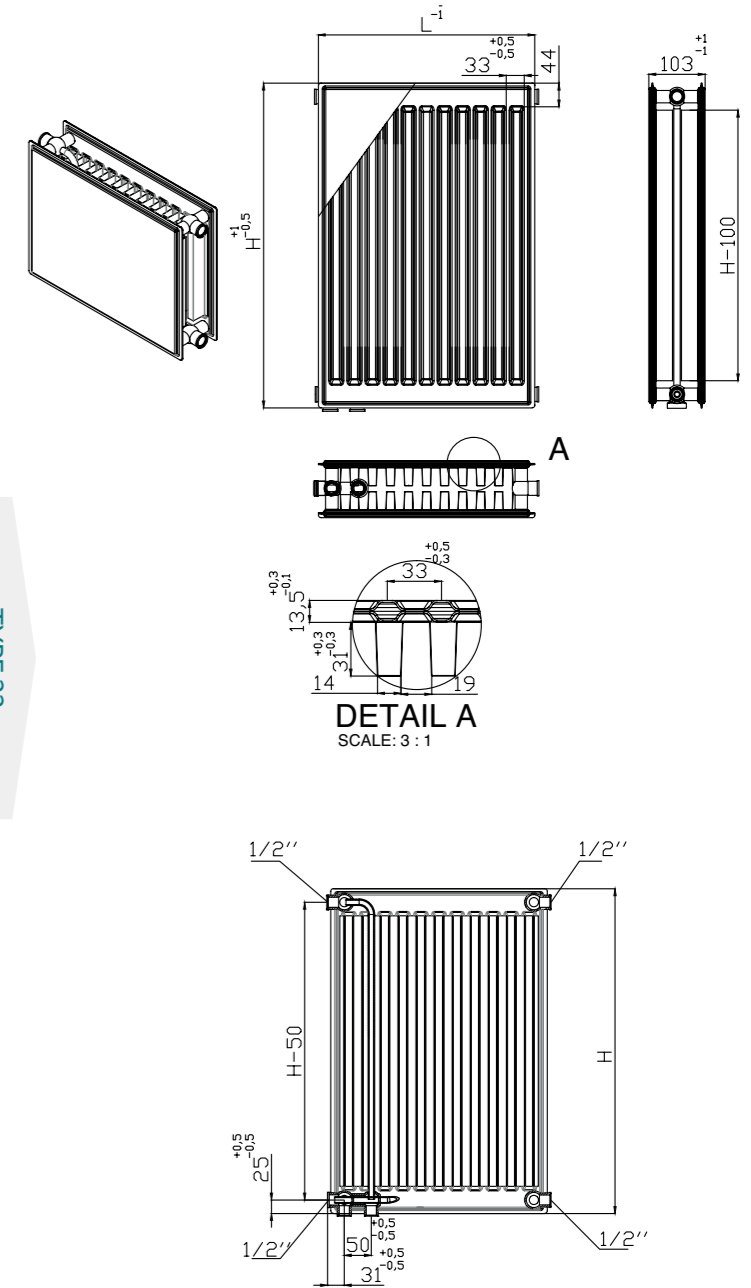
Max Working Pressure: 10 bar  
Max Working Temp: 110 degrees C

TECHNICAL DIAGRAMS  
FLAT PANEL COLLECTION

TYPE 11



TYPE 22





## FLAT LINED PANEL COLLECTION

The Flat Lined Panel collection adds a modern and stylish alternative option to the flat panel range, with a horizontal lined effect design it maintains all the product benefits of the flat panel range but with a softer more aesthetic appearance for those wanting to add a different dimension to their room or office.

### FEATURES AND BENEFITS

- Withstands external corrosion for twice as long as standard finishes.
- Alternative sizes available in Type 11, Type 21, Type 22 and Type 33.
- Steel radiator finished in white (RAL 9016).
- Other RAL Options available.



10 YEARS  
MANUFACTURERS WARRANTY



CENTRAL HEATING



FREE NEXT DAY DELIVERY



Available in White RAL 9016 as standard. Other RAL options available on request.

## TECHNICAL SPECIFICATIONS FLAT LINED PANEL COLLECTION

Heights available up to 900mm, lengths up to 3000mm.

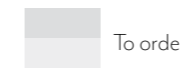
Type 11, Type 21, Type 22 & Type 33 - Price on application.

### FLAT LINED PANEL - T11 SINGLE

| Height | Length | Product Code | Weight KG | Water Content | Output at ΔT30k |       | Output at ΔT50k |       |
|--------|--------|--------------|-----------|---------------|-----------------|-------|-----------------|-------|
|        |        |              |           |               | Watts           | BTU   | Watts           | BTU   |
| 300    | 400    | 610191       | 27.5      | 0.6           | 97              | 330   | 182             | 621   |
|        | 600    | 610192       | 30.9      | 0.9           | 146             | 497   | 272             | 931   |
|        | 800    | 610193       | 27.5      | 1.2           | 195             | 665   | 363             | 1242  |
|        | 1000   | 610194       | 30.9      | 1.5           | 244             | 832   | 454             | 1552  |
|        | 1200   | 610195       | 27.5      | 1.8           | 293             | 999   | 545             | 1863  |
|        | 1400   | 610196       | 30.9      | 2.1           | 342             | 1166  | 636             | 2173  |
|        | 1600   | 610197       | 27.5      | 2.4           | 391             | 1333  | 727             | 2484  |
| 500    | 1800   | 610198       | 30.9      | 2.7           | 439             | 1497  | 818             | 2794  |
|        | 2000   | 610199       | 34.1      | 3.0           | 488             | 1664  | 909             | 3105  |
|        | 400    | 610200       | 8.3       | 1.0           | 146             | 497   | 273             | 932   |
|        | 600    | 610201       | 11.5      | 1.5           | 218             | 745   | 410             | 1,398 |
|        | 800    | 610202       | 14.7      | 2.0           | 291             | 993   | 547             | 1,864 |
|        | 1000   | 610203       | 17.9      | 2.5           | 364             | 1,241 | 683             | 2,330 |
|        | 1200   | 610204       | 21.1      | 3.0           | 437             | 1,490 | 820             | 2,795 |
| 600    | 1400   | 610205       | 24.3      | 3.5           | 510             | 1,738 | 956             | 3,261 |
|        | 1600   | 610206       | 27.5      | 4.0           | 582             | 1,986 | 1093            | 3,727 |
|        | 1800   | 610207       | 30.9      | 4.5           | 655             | 2,234 | 1230            | 4,193 |
|        | 2000   | 610208       | 34.1      | 5.0           | 728             | 2,483 | 1366            | 4,659 |
|        | 400    | 610209       | 9.7       | 1.2           | 166             | 567   | 314             | 1,070 |
|        | 600    | 610210       | 13.7      | 1.8           | 249             | 850   | 470             | 1,604 |
|        | 800    | 610211       | 17.6      | 2.4           | 332             | 1,133 | 627             | 2,139 |
| 700    | 1000   | 610212       | 21.6      | 3.0           | 415             | 1,416 | 784             | 2,674 |
|        | 1200   | 610213       | 25.5      | 3.6           | 499             | 1,700 | 941             | 3,209 |
|        | 1400   | 610214       | 29.4      | 4.2           | 582             | 1,983 | 1098            | 3,744 |
|        | 1600   | 610215       | 33.4      | 4.8           | 665             | 2,266 | 1255            | 4,278 |
|        | 1800   | 610216       | 37.6      | 5.4           | 748             | 2,549 | 1411            | 4,813 |
|        | 2000   | 610217       | 41.5      | 6.0           | 831             | 2,833 | 1568            | 5,348 |



Stocked



To order

Max Working Pressure: 10 bar  
Max Working Temp: 110 degrees C

### FLAT LINED PANEL - T22 DOUBLE

| Height | Length | Product Code | Weight KG | Water Content | Output at ΔT30k |       | Output at ΔT50k |        |
|--------|--------|--------------|-----------|---------------|-----------------|-------|-----------------|--------|
|        |        |              |           |               | Watts           | BTU   | Watts           | BTU    |
| 300    | 500    | 610218       | 9.6       | 1.5           | 237             | 809   | 451             | 1,537  |
|        | 1000   | 610219       | 17.8      | 3.0           | 474             | 1,617 | 901             | 3,074  |
|        | 1400   | 610220       | 27.6      | 4.8           | 759             | 2,588 | 1261            | 4,919  |
|        | 2000   | 610221       | 34.3      | 6.0           | 949             | 3,235 | 1803            | 6,149  |
| 400    | 500    | 610222       | 13.0      | 2.0           | 324             | 1,019 | 569             | 1,942  |
|        | 600    | 610223       | 15.2      | 2.4           | 358             | 1,223 | 683             | 2,331  |
|        | 800    | 610224       | 19.7      | 3.2           | 478             | 1,631 | 940             | 3,108  |
|        | 1000   | 610225       | 24.0      | 4.0           | 598             | 2,039 | 1,139           | 3,885  |
|        | 1200   | 610226       | 28.4      | 4.8           | 717             | 2,446 | 1,366           | 4,662  |
|        | 1400   | 610227       | 32.8      | 5.6           | 836             | 2,854 | 1,595           | 5,439  |
|        | 1600   | 610228       | 37.2      | 6.4           | 956             | 3,262 | 1,822           | 6,216  |
| 500    | 1800   | 610229       | 41.8      | 7.2           | 1076            | 3,670 | 2,050           | 6,993  |
|        | 2000   | 610230       | 46.2      | 8.0           | 1195            | 4,077 | 2,277           | 7,770  |
|        | 400    | 610231       | 13.3      | 2.0           | 286             | 975   | 546             | 1,863  |
|        | 600    | 610232       | 18.7      | 3.0           | 429             | 1,463 | 820             | 2,795  |
|        | 800    | 610233       | 24.3      | 4.0           | 572             | 1,950 | 1093            | 3,726  |
|        | 1000   | 610234       | 29.8      | 5.0           | 715             | 2,438 | 1366            | 4,658  |
|        | 1200   | 610235       | 35.2      | 6.0           | 858             | 2,926 | 1639            | 5,589  |
| 600    | 1400   | 610236       | 43.4      | 7.0           | 1001            | 3,413 | 1912            | 6,521  |
|        | 1600   | 610237       | 46.2      | 8.0           | 1144            | 3,901 | 2185            | 7,452  |
|        | 1800   | 610238       | 51.9      | 9.0           | 1287            | 4,389 | 2459            | 8,384  |
|        | 2000   | 610239       | 57.5      | 10.0          | 1430            | 4,876 | 2732            | 9,315  |
|        | 400    | 610240       | 15.6      | 2.4           | 331             | 1,128 | 634             | 2,161  |
|        | 600    | 610241       | 22.3      | 3.6           | 496             | 1,692 | 950             | 3,241  |
|        | 800    | 610242       | 29.0      | 4.8           | 662             | 2,256 | 1267            | 4,321  |
| 700    | 1000   | 610243       | 35.6      | 6.0           | 827             | 2,820 | 1584            | 5,402  |
|        | 1200   | 610244       | 42.3      | 7.2           | 992             | 3,384 | 1901            | 6,482  |
|        | 1400   | 610245       | 48.9      | 8.4           | 1158            | 3,948 | 2218            | 7,562  |
|        | 1600   | 610246       | 55.7      | 9.6           | 1323            | 4,512 | 2534            | 8,642  |
|        | 1800   | 610247       | 62.6      | 10.8          | 1489            | 5,077 | 2851            | 9,723  |
|        | 2000   | 610248       | 69.3      | 12.0          | 1654            | 5,641 | 3168            | 10,803 |
|        | 500    | 610249       | 22.7      | 3.3           | 467             | 1,592 | 897             | 3,061  |
| 600    | 600    | 610250       | 26.7      | 3.9           | 561             | 1,911 | 1,076           | 3,673  |
|        | 800    | 610251       | 34.7      | 5.3           | 746             | 2,547 | 1,436           | 4,898  |
|        | 1000   | 610252       | 42.7      | 6.7           | 933             | 3,184 | 1,794           | 6,122  |
|        | 1200   | 610253       | 50.7      | 8.1           | 1120            | 3,821 | 2,153           | 7,346  |
|        | 1400   | 610254       | 58.6      | 9.5           | 1307            | 4,458 | 2,512           | 8,571  |
|        | 1600   | 610255       | 66.7      | 10.8          | 1493            | 5,095 | 2,871           | 9,795  |
|        | 1800   | 610256       | 75.0      | 12.2          | 1680            | 5,732 | 3,230           | 11,020 |
| 2000   | 610257 | 83.1         | 13.6      | 1867          | 6,369           | 3,589 | 12,244          |        |



FLAT LINED PANEL - P10

VERTICAL FLAT LINED PANEL RANGE

| Height | Length | Product Code | Weight KG | Water Content | Output at $\Delta T_{30k}$ |       | Output at $\Delta T_{50k}$ |       |
|--------|--------|--------------|-----------|---------------|----------------------------|-------|----------------------------|-------|
|        |        |              |           |               | Watts                      | BTU   | Watts                      | BTU   |
| 1600   | 400    | 600174       | 19.9      | 3.7           | 265                        | 906   | 509                        | 1,737 |
| 1800   |        | 600175       | 22.3      | 4.2           | 299                        | 1,019 | 573                        | 1,955 |
| 2000   |        | 600176       | 24.8      | 4.6           | 332                        | 1,132 | 636                        | 2,172 |
| 2200   |        | 600177       | 27.3      | 5.1           | 365                        | 1,245 | 700                        | 2,389 |
| 1600   | 500    | 600178       | 23.3      | 4.6           | 318                        | 1,084 | 608                        | 2,075 |
| 1800   |        | 600179       | 26.2      | 5.1           | 357                        | 1,219 | 684                        | 2,335 |
| 2000   |        | 600180       | 29.1      | 5.7           | 397                        | 1,355 | 760                        | 2,594 |
| 2200   |        | 600181       | 32.0      | 6.3           | 437                        | 1,490 | 836                        | 2,854 |
| 1600   | 600    | 600182       | 25.3      | 5.4           | 370                        | 1,263 | 707                        | 2,414 |
| 1800   |        | 600183       | 28.5      | 6.1           | 416                        | 1,421 | 796                        | 2,715 |
| 2000   |        | 600184       | 31.6      | 6.8           | 463                        | 1,579 | 884                        | 3,017 |
| 2200   |        | 600185       | 34.8      | 7.5           | 509                        | 1,737 | 973                        | 3,319 |

FLAT LINED PANEL - P20

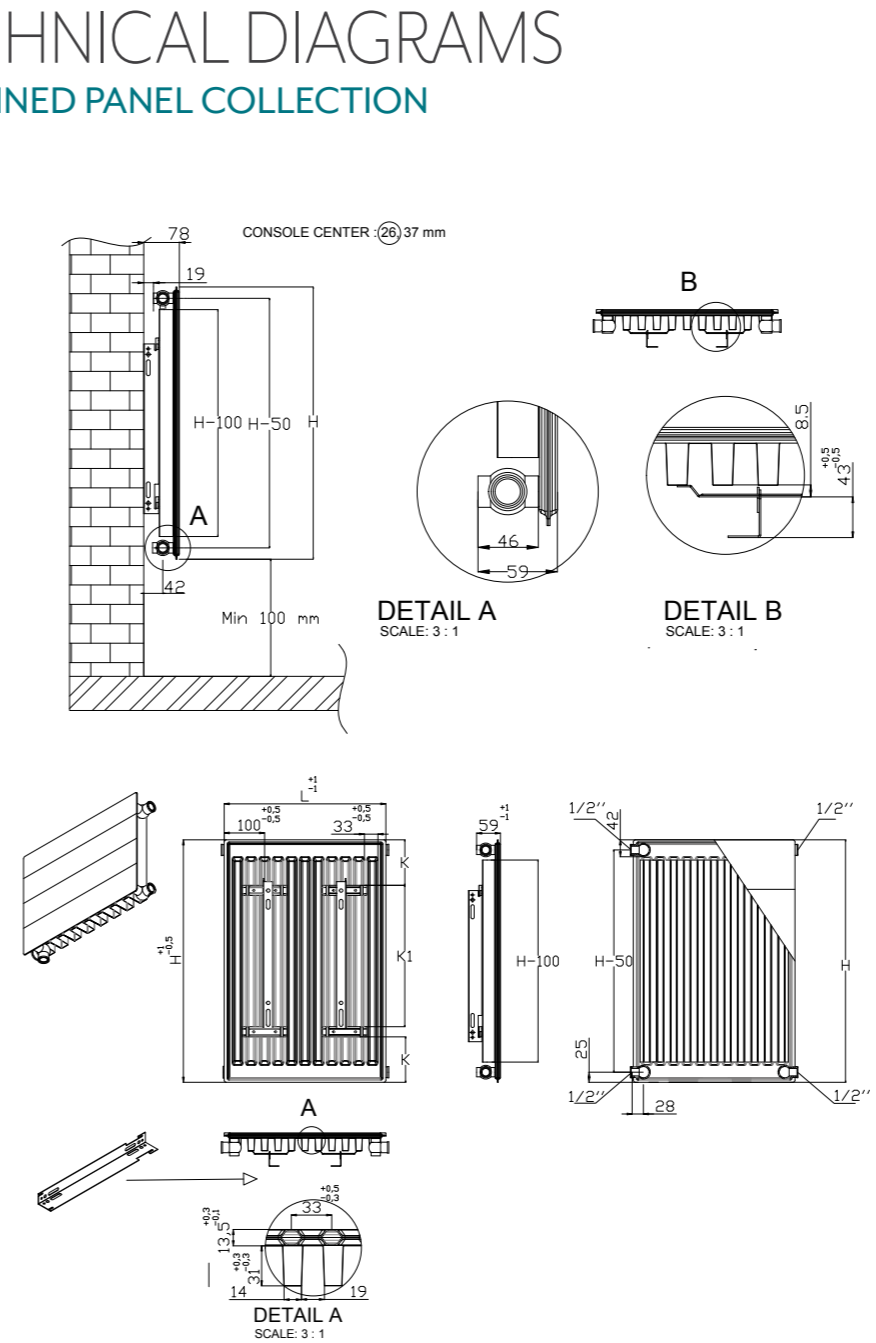
VERTICAL FLAT LINED PANEL RANGE

| Height | Length | Product Code | Weight KG | Water Content | Output at $\Delta T_{30k}$ |       | Output at $\Delta T_{50k}$ |       |
|--------|--------|--------------|-----------|---------------|----------------------------|-------|----------------------------|-------|
|        |        |              |           |               | Watts                      | BTU   | Watts                      | BTU   |
| 1600   | 400    | 600186       | 30.7      | 7.7           | 460                        | 1,571 | 885                        | 3,020 |
| 1800   |        | 600187       | 34.5      | 8.6           | 518                        | 1,767 | 996                        | 3,398 |
| 2000   |        | 600188       | 38.4      | 9.6           | 575                        | 1,963 | 1,106                      | 3,775 |
| 2200   |        | 600189       | 42.2      | 10.5          | 633                        | 2,160 | 1,217                      | 4,153 |
| 1600   | 500    | 600190       | 45.2      | 9.3           | 552                        | 1,883 | 1,061                      | 3,621 |
| 1800   |        | 600191       | 50.9      | 10.4          | 621                        | 2,118 | 1,194                      | 4,074 |
| 2000   |        | 600192       | 56.5      | 11.6          | 690                        | 2,354 | 1,327                      | 4,526 |
| 2200   |        | 600193       | 62.1      | 12.7          | 759                        | 2,589 | 1,459                      | 4,979 |
| 1600   | 600    | 600194       | 47.9      | 10.7          | 640                        | 2,183 | 1,230                      | 4,197 |
| 1800   |        | 600195       | 53.9      | 12.1          | 720                        | 2,455 | 1,384                      | 4,722 |
| 2000   |        | 600196       | 59.9      | 13.4          | 800                        | 2,728 | 1,538                      | 5,246 |
| 2200   |        | 600197       | 65.8      | 14.7          | 880                        | 3,001 | 1,691                      | 5,771 |

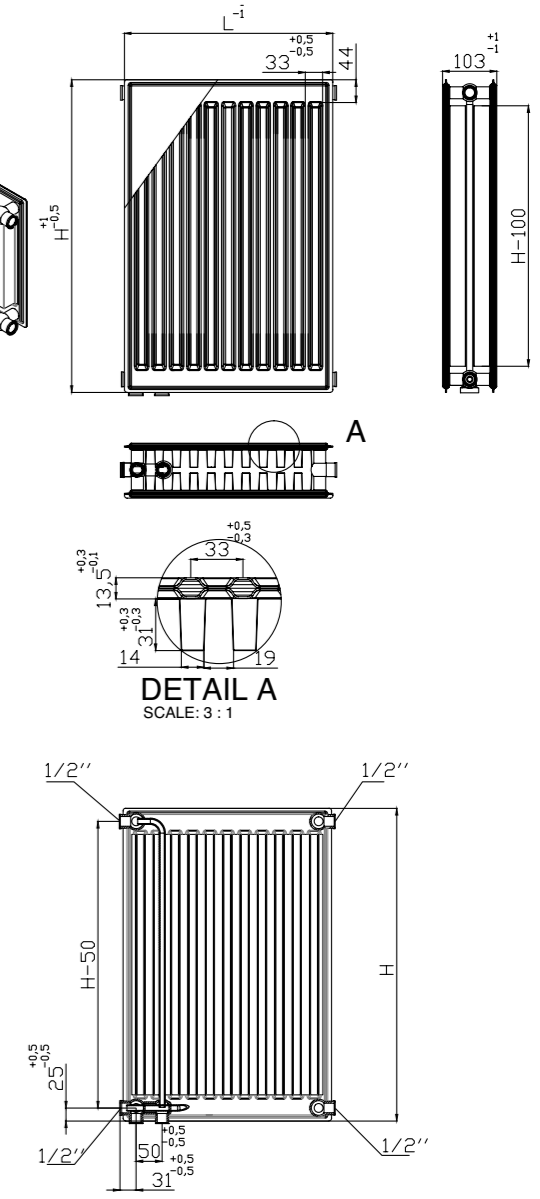


Max Working Pressure: 10 bar  
Max Working Temp: 110 degrees C

TYPE 11



TYPE 22





## WINDSOR MULTICOLUMN RADIATOR COLLECTION

The Windsor Multicolumn radiators are stylish and versatile. Perfect in a modern or traditional setting, with vertical and horizontal orientations in a wide range of sizes and outputs, making them the perfect solution throughout the home or office.

### FEATURES AND BENEFITS:

- Stylish and robust
- Wide range of sizes and outputs
- Matching horizontal and vertical range
- Can be fitted to suit flow and return on existing pipework
- Available in powder coated finish in any RAL colour, from 30% additional cost (6 week lead time)
- Supplied with wall mounting brackets, air vent and blanking plug
- Floor standing brackets are an optional extra

## OPTIONS

### FLOOR STANDING BRACKETS

Supplied in pairs  
Colour: white  
Code: 190078



### VALVE OPTIONS

Please see page 44-45 for our full range of appropriate valve styles.

SEE PAGE 44-45



### Colours to order (6 weeks lead time)

|                       |                      |                        |          |          |
|-----------------------|----------------------|------------------------|----------|----------|
| Pearl Shine White     | Rough Taupe          | Hammered Grey          | RAL 1023 | RAL 8011 |
| Pearl Shine Gold      | Rough Dark Grey      | Special Texture Inox   | RAL 1004 | RAL 8019 |
| Pearl Shine Silver    | Rough Anthracite     | Special Texture Corten | RAL 1019 | RAL 9005 |
| Pearl Shine Copper    | Real Gypsum          | Special Texture        | RAL 7006 | RAL 7015 |
| Brilliant Stars       | Real Gold Curry      | RAL 9010               | RAL 9018 | RAL 7011 |
| Brilliant Grey        | Real Red Leaf        | RAL 9016               | RAL 7047 | RAL 7016 |
| Brilliant Titanium    | Real Mint Green      | RAL 9001               | RAL 7035 | RAL 7026 |
| Brilliant Desert Rose | Textile Silky Gold   | RAL 1013               | RAL 7038 | RAL 5010 |
| Brilliant Chocolate   | Textile Silky Violet | RAL 1015               | RAL 7030 | RAL 6027 |
| Rough Vintage         | Hammered Copper      | RAL 1002               | RAL 7042 | RAL 3000 |

RAL colours (except 1004) available in gloss, satin or matt finish. Additional cost ● + 30% ●● + 35% ●●● + 45%



10 YEARS  
MANUFACTURERS  
WARRANTY



CENTRAL  
HEATING



FREE NEXT  
DAY



STANDARD COLOUR  
White RAL 9016



# TECHNICAL SPECIFICATIONS

## WINDSOR MULTICOLUMN COLLECTION

Heights up to 3000mm, sections up to 6 section available to order - price on application.

VISIT US ONLINE AT  
**TOWELRADS.COM**

TO DOWNLOAD FULL FITTING INSTRUCTIONS AND TECHNICAL DATA SHEETS AND TO VIEW OUR WINDSOR MULTICOLUMN RADIATORS.



WHITE

| Columns  | Sections | Height | Length | Product Code | Weight KG | Water Content L | Output at ΔT30k |      | Output at ΔT50k |      |
|----------|----------|--------|--------|--------------|-----------|-----------------|-----------------|------|-----------------|------|
|          |          |        |        |              |           |                 | Watts           | BTU  | Watts           | BTU  |
| 2 Column | 8        | 300    | 394    | ----         | 4.0       | 3.2             | 106             | 360  | 194             | 663  |
|          | 10       |        | 486    | ----         | 5.0       | 4               | 132             | 450  | 243             | 829  |
|          | 12       |        | 578    | ----         | 6.0       | 4.8             | 158             | 540  | 292             | 995  |
|          | 17       |        | 808    | ----         | 8.5       | 6.8             | 225             | 766  | 413             | 1410 |
|          | 21       |        | 992    | ----         | 10.5      | 8.4             | 277             | 945  | 511             | 1741 |
|          | 25       |        | 1176   | ----         | 12.5      | 10              | 330             | 1126 | 608             | 2073 |
|          | 8        | 400    | 394    | ----         | 4.8       | 4               | 135             | 461  | 249             | 849  |
|          | 10       |        | 486    | ----         | 6.0       | 5               | 169             | 576  | 311             | 1061 |
|          | 12       |        | 578    | ----         | 7.2       | 6               | 203             | 691  | 373             | 1273 |
|          | 17       |        | 808    | ----         | 10.2      | 8.5             | 287             | 980  | 529             | 1804 |
|          | 21       |        | 992    | ----         | 12.6      | 10.5            | 355             | 1210 | 653             | 2228 |
|          | 25       |        | 1176   | ----         | 15.0      | 12.5            | 422             | 1441 | 778             | 2653 |
|          | 8        | 500    | 394    | ----         | 6.4       | 4.8             | 165             | 563  | 304             | 1037 |
|          | 10       |        | 486    | ----         | 8.0       | 6               | 207             | 704  | 380             | 1297 |
|          | 12       |        | 578    | 190001       | 9.6       | 7.2             | 248             | 845  | 456             | 1556 |
|          | 17       |        | 808    | 190002       | 10.2      | 10.2            | 351             | 1197 | 646             | 2204 |
|          | 21       |        | 992    | 190003       | 16.8      | 12.6            | 434             | 1479 | 799             | 2723 |
|          | 25       |        | 1176   | 190005       | 20.0      | 15              | 516             | 1760 | 951             | 3242 |
|          | 8        | 600    | 394    | 190007       | 7.2       | 5.6             | 195             | 664  | 358             | 1222 |
|          | 12       |        | 578    | 190008       | 10.8      | 8.4             | 292             | 997  | 538             | 1836 |
|          | 17       |        | 808    | 190009       | 15.3      | 11.9            | 414             | 1412 | 762             | 2600 |
|          | 21       |        | 992    | 190010       | 18.9      | 14.7            | 511             | 1744 | 942             | 3211 |
|          | 25       |        | 1176   | 190011       | 22.5      | 17.5            | 609             | 2075 | 1121            | 3822 |
|          | 8        |        | 750    | 394          | 190012    | 8.8             | 6.4             | 239  | 815             | 440  |
| 10       | 486      | 190013 |        | 11.0         | 8         | 299             | 1019            | 550  | 1876            |      |
| 12       | 578      | 190014 |        | 13.2         | 9.6       | 359             | 1223            | 660  | 2252            |      |
| 17       | 808      | 190015 |        | 18.7         | 13.6      | 508             | 1732            | 935  | 3190            |      |
| 21       | 992      | 190016 |        | 23.1         | 16.8      | 628             | 2140            | 1156 | 3941            |      |
| 25       | 1176     | ----   |        | 27.5         | 20        | 747             | 2548            | 1376 | 4692            |      |

Product codes to be confirmed at time of quotation/order.

WHITE

| Columns  | Sections | Height | Length | Product Code | Weight KG | Water Content L | Output at ΔT30k |      | Output at ΔT50k |      |      |
|----------|----------|--------|--------|--------------|-----------|-----------------|-----------------|------|-----------------|------|------|
|          |          |        |        |              |           |                 | Watts           | BTU  | Watts           | BTU  |      |
| 3 Column | 8        | 300    | 394    | ----         | 4.0       | 4.8             | 144             | 491  | 265             | 904  |      |
|          | 10       |        | 486    | ----         | 5.0       | 6               | 180             | 613  | 331             | 1129 |      |
|          | 12       |        | 578    | ----         | 6.0       | 7.2             | 216             | 736  | 397             | 1355 |      |
|          | 17       |        | 808    | ----         | 8.5       | 10.2            | 306             | 1043 | 563             | 1920 |      |
|          | 21       |        | 992    | 190022       | 10.5      | 12.6            | 378             | 1287 | 695             | 2371 |      |
|          | 25       |        | 1176   | 190023       | 12.5      | 15              | 450             | 1534 | 828             | 2825 |      |
|          | 30       | 1406   | 190024 | 15.0         | 18        | 539             | 1840            | 994  | 3388            |      |      |
|          | 8        | 400    | 394    | ----         | 6.4       | 5.6             | 184             | 627  | 339             | 1155 |      |
|          | 10       |        | 486    | ----         | 8.0       | 7               | 230             | 784  | 423             | 1443 |      |
|          | 12       |        | 578    | ----         | 9.6       | 8.4             | 276             | 940  | 508             | 1732 |      |
|          | 17       |        | 808    | ----         | 13.6      | 11.9            | 391             | 1333 | 720             | 2454 |      |
|          | 21       |        | 992    | 190025       | 16.8      | 14.7            | 482             | 1645 | 889             | 3030 |      |
|          | 25       |        | 1176   | 190026       | 20.0      | 17.5            | 575             | 1960 | 1059            | 3610 |      |
|          | 5        | 500    | 256    | 190028       | 5.0       | 4               | 140             | 478  | 258             | 880  |      |
|          | 8        |        | 394    | 190029       | 8.0       | 6.4             | 224             | 765  | 413             | 1409 |      |
|          | 11       |        | 532    | 190030       | 11.0      | 8.8             | 309             | 1052 | 568             | 1938 |      |
|          | 12       |        | 578    | 190031       | 12.0      | 9.6             | 336             | 1147 | 619             | 2112 |      |
|          | 15       |        | 716    | 190032       | 15.0      | 12              | 420             | 1434 | 774             | 2640 |      |
|          | 17       |        | 808    | 190033       | 17.0      | 13.6            | 476             | 1625 | 877             | 2992 |      |
|          | 21       |        | 992    | 190034       | 21.0      | 16.8            | 589             | 2008 | 1084            | 3698 |      |
|          | 25       |        | 1176   | 190035       | 25.0      | 20              | 701             | 2390 | 1291            | 4402 |      |
|          | 8        |        | 600    | 394          | 190036    | 10.4            | 8               | 264  | 900             | 486  | 1658 |
|          | 12       |        |        | 578          | 190037    | 15.6            | 12              | 397  | 1352            | 730  | 2490 |
|          | 17       | 808    |        | 190038       | 22.1      | 17              | 562             | 1916 | 1035            | 3528 |      |
| 21       | 992      | 190039 |        | 27.3         | 21        | 694             | 2366            | 1278 | 4357            |      |      |
| 25       | 1176     | 190040 |        | 32.5         | 25        | 826             | 2816            | 1521 | 5186            |      |      |
| 8        | 750      | 394    |        | 190041       | 11.2      | 8.8             | 324             | 1104 | 596             | 2034 |      |
| 10       |          | 486    | 190042 | 14.0         | 11        | 405             | 1380            | 745  | 2542            |      |      |
| 12       |          | 578    | 190043 | 16.8         | 13.2      | 486             | 1656            | 894  | 3050            |      |      |
| 17       |          | 808    | 190044 | 23.8         | 18.7      | 688             | 2347            | 1268 | 4323            |      |      |
| 21       |          | 992    | 190045 | 29.4         | 23.1      | 850             | 2900            | 1566 | 5340            |      |      |
| 25       |          | 1176   | 190046 | 35.0         | 27.5      | 1012            | 3451            | 1864 | 6356            |      |      |

Product codes to be confirmed at time of quotation/order.




Stocked



To order

**Max Working Pressure:** 10 bar **Max Working Temp:** 110 degrees C

WHITE

| Columns  | Sections | Height | Length | Product Code | Weight KG | Water Content L | Output at ΔT30k |      | Output at ΔT50k |      |
|--|----------|--------|--------|--------------|-----------|-----------------|-----------------|------|-----------------|------|
|  |          |        |        |              |           |                 | Watts           | BTU  | Watts           | BTU  |
| <br><b>4 Column</b> | 8        | 300    | 394    | ----         | 18.9      | 6.4             | 184             | 627  | 339             | 1155 |
|  | 10       |        | 486    | ----         | 22.5      | 8               | 230             | 784  | 423             | 1443 |
|  | 12       |        | 578    | ----         | 27.0      | 9.6             | 276             | 940  | 508             | 1732 |
|  | 17       |        | 808    | ----         | 7.2       | 13.6            | 391             | 1333 | 720             | 2454 |
|  | 21       |        | 992    | 190055       | 9.0       | 16.8            | 482             | 1645 | 889             | 3030 |
|  | 25       |        | 1176   | 190056       | 10.8      | 20              | 575             | 1960 | 1059            | 3610 |
|  | 30       |        | 1406   | 190057       | 15.3      | 24              | 689             | 2351 | 1270            | 4330 |
|  | 8        | 400    | 394    | ----         | 9.6       | 7.2             | 241             | 823  | 444             | 1515 |
|  | 10       |        | 486    | ----         | 12.0      | 9               | 302             | 1028 | 555             | 1894 |
|  | 12       |        | 578    | ----         | 14.4      | 10.8            | 362             | 1234 | 666             | 2272 |
|  | 17       |        | 808    | 190058       | 20.4      | 15.3            | 513             | 1749 | 945             | 3221 |
|  | 21       |        | 992    | 190059       | 25.2      | 18.9            | 633             | 2160 | 1167            | 3978 |
|  | 25       |        | 1176   | 190060       | 30.0      | 22.5            | 754             | 2572 | 1389            | 4736 |
|  | 8        |        | 500    | 394          | ----      | 12.0            | 8.8             | 297  | 1012            | 547  |
|  | 10       | 486    |        | ----         | 15.0      | 11              | 371             | 1265 | 683             | 2330 |
|  | 12       | 578    |        | 190062       | 18.0      | 13.2            | 446             | 1519 | 821             | 2798 |
|  | 17       | 808    |        | 190063       | 25.5      | 18.7            | 631             | 2151 | 1162            | 3961 |
|  | 21       | 992    |        | 190064       | 31.5      | 23.1            | 779             | 2657 | 1435            | 4893 |
|  | 25       | 1176   |        | 190065       | 37.5      | 27.5            | 928             | 3165 | 1709            | 5828 |
|  | 8        | 600    |        | 394          | 190067    | 18.0            | 9.6             | 353  | 1202            | 649  |
|  | 10       |        | 486    | ----         | 21.6      | 12              | 441             | 1502 | 811             | 2767 |
|  | 12       |        | 578    | 190068       | 30.6      | 14.4            | 529             | 1803 | 974             | 3320 |
|  | 17       |        | 808    | 190069       | 37.8      | 20.4            | 749             | 2555 | 1380            | 4705 |
|  | 21       |        | 992    | 190070       | 45.0      | 25.2            | 925             | 3155 | 1704            | 5811 |
|  | 25       |        | 1176   | 190071       | 54.0      | 30              | 1102            | 3758 | 2029            | 6920 |
| 8  | 750      |        | 394    | 190072       | 17.6      | 12              | 435             | 1482 | 801             | 2730 |
| 10   |          | 486    | 190073 | 22.0         | 15        | 543             | 1853            | 1001 | 3412            |      |
| 12   |          | 578    | 190074 | 26.4         | 18        | 652             | 2224            | 1201 | 4095            |      |
| 17   |          | 808    | 190075 | 37.4         | 25.5      | 924             | 3150            | 1701 | 5801            |      |
| 21   |          | 992    | 190076 | 46.2         | 31.5      | 1141            | 3891            | 2101 | 7165            |      |
| 25   |          | 1176   | 190077 | 55.0         | 37.5      | 1358            | 4632            | 2501 | 8530            |      |

Product codes to be confirmed at time of quotation/order.




Stocked



To order

Max Working Pressure: 10 bar Max Working Temp: 110 degrees C

WHITE

| Columns  | Sections | Height | Length | Product Code | Weight KG | Water Content L | Output at ΔT30k |      | Output at ΔT50k |      |
|--|----------|--------|--------|--------------|-----------|-----------------|-----------------|------|-----------------|------|
|  |          |        |        |              |           |                 | Watts           | BTU  | Watts           | BTU  |
| <br><b>5 Column</b> | 8        | 300    | 394    | ----         | 9.6       | 8               | 226             | 769  | 416             | 1417 |
|  | 10       |        | 486    | ----         | 12.0      | 10              | 282             | 962  | 519             | 1771 |
|  | 12       |        | 578    | ----         | 14.4      | 12              | 338             | 1154 | 623             | 2125 |
|  | 17       |        | 808    | ----         | 20.4      | 17              | 479             | 1635 | 883             | 3011 |
|  | 21       |        | 992    | ----         | 25.2      | 21              | 592             | 2019 | 1091            | 3719 |
|  | 25       |        | 1176   | ----         | 30.0      | 25              | 705             | 2404 | 1298            | 4427 |
|  | 8        |        | 400    | 394          | ----      | 12.8            | 9.6             | 292  | 996             | 538  |
|  | 10       | 486    |        | ----         | 16.0      | 12              | 365             | 1245 | 672             | 2293 |
|  | 12       | 578    |        | ----         | 19.2      | 14.4            | 438             | 1494 | 807             | 2752 |
|  | 17       | 808    |        | ----         | 27.2      | 20.4            | 621             | 2117 | 1143            | 3898 |
|  | 21       | 992    |        | ----         | 33.6      | 25.2            | 767             | 2615 | 1412            | 4815 |
|  | 25       | 1176   |        | ----         | 40.0      | 30              | 913             | 3112 | 1681            | 5732 |
|  | 8        | 500    |        | 394          | ----      | 15.2            | 11.2            | 357  | 1218            | 658  |
|  | 10       |        | 486    | ----         | 19.0      | 14              | 447             | 1523 | 823             | 2805 |
|  | 12       |        | 578    | ----         | 22.8      | 16.8            | 536             | 1828 | 987             | 3366 |
|  | 17       |        | 808    | ----         | 32.3      | 23.8            | 759             | 2589 | 1398            | 4768 |
|  | 21       |        | 992    | ----         | 39.9      | 29.4            | 938             | 3198 | 1727            | 5890 |
|  | 25       |        | 1176   | ----         | 47.5      | 35              | 1117            | 3808 | 2056            | 7012 |
|  | 8        |        | 600    | 394          | ----      | 18.4            | 12.8            | 422  | 1438            | 777  |
|  | 10       | 486    |        | ----         | 23.0      | 16              | 527             | 1797 | 971             | 3310 |
|  | 12       | 578    |        | ----         | 27.6      | 19.2            | 632             | 2157 | 1165            | 3972 |
|  | 17       | 808    |        | ----         | 39.1      | 27.2            | 896             | 3055 | 1650            | 5627 |
|  | 21       | 992    |        | ----         | 48.3      | 33.6            | 1107            | 3774 | 2038            | 6951 |
|  | 25       | 1176   |        | ----         | 57.5      | 40              | 1318            | 4493 | 2426            | 8274 |
|  | 8        | 750    |        | 394          | ----      | 22.4            | 14.4            | 517  | 1764            | 952  |
| 10   | 486      |        | ----   | 28.0         | 18        | 647             | 2205            | 1191 | 4060            |      |
| 12   | 578      |        | ----   | 33.6         | 21.6      | 776             | 2646            | 1429 | 4873            |      |
| 17   | 808      |        | ----   | 47.6         | 30.6      | 1099            | 3748            | 2024 | 6903            |      |
| 21   | 992      |        | ----   | 58.8         | 37.8      | 1358            | 4630            | 2501 | 8527            |      |
| 25   | 1176     |        | ----   | 70.0         | 45        | 1616            | 5512            | 2977 | 10151           |      |

Product codes to be confirmed at time of quotation/order.

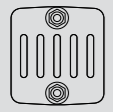


Stocked





To order

Max Working Pressure: 10 bar Max Working Temp: 110 degrees C

| Columns | Sections | Height | Length | Product Code | Weight KG | Water Content L | Output at $\Delta T_{30k}$   |      | Output at $\Delta T_{50k}$ |     |      |      |      |
|---------|----------|--------|--------|--------------|-----------|-----------------|--|------|----------------------------|-----|------|------|------|
|         |          |        |        |              |           |                 | Watts  | BTU  | Watts                      | BTU |      |      |      |
|         |          |        |        |              |           |                 | <br><b>6 Column</b> |      |                            |     | 300  | 8    | 394  |
| 10      | 486      | ----   | 15.0   | 11           | 339       | 1154            |  |      |                            |     |      | 623  | 2126 |
| 12      | 578      | ----   | 18.0   | 13.2         | 406       | 1385            |  |      |                            |     |      | 748  | 2551 |
| 17      | 808      | ----   | 25.5   | 18.7         | 575       | 1962            |  |      |                            |     |      | 1060 | 3614 |
| 21      | 992      | ----   | 31.5   | 23.1         | 711       | 2424            |  |      |                            |     |      | 1309 | 4464 |
| 25      | 1176     | ----   | 37.5   | 27.5         | 846       | 2886            |  |      |                            |     |      | 1558 | 5314 |
| 400     | 8        | 394    | ----   | 15.2         | 10.4      | 352             |  |      |                            |     | 1201 | 648  | 2211 |
|         | 10       | 486    | ----   | 19.0         | 13        | 440             |  |      |                            |     | 1501 | 811  | 2764 |
|         | 12       | 578    | ----   | 22.8         | 15.6      | 528             |  |      |                            |     | 1801 | 973  | 3317 |
|         | 17       | 808    | ----   | 32.3         | 22.1      | 748             |  |      |                            |     | 2552 | 1378 | 4699 |
|         | 21       | 992    | ----   | 39.9         | 27.3      | 924             |  |      |                            |     | 3152 | 1702 | 5804 |
|         | 25       | 1176   | ----   | 47.5         | 32.5      | 1100            |  |      |                            |     | 3752 | 2026 | 6910 |
| 500     | 8        | 394    | ----   | 18.4         | 12.8      | 432             |  |      |                            |     | 1473 | 796  | 2713 |
|         | 10       | 486    | ----   | 23.0         | 16        | 540             |  |      |                            |     | 1842 | 995  | 3392 |
|         | 12       | 578    | ----   | 27.6         | 19.2      | 648             |  |      |                            |     | 2210 | 1194 | 4070 |
|         | 17       | 808    | ----   | 39.1         | 27.2      | 918             |  |      |                            |     | 3131 | 1691 | 5766 |
|         | 21       | 992    | ----   | 48.3         | 33.6      | 1134            |  |      |                            |     | 3868 | 2089 | 7123 |
|         | 25       | 1176   | ----   | 57.5         | 40        | 1350            |  |      |                            |     | 4604 | 2487 | 8479 |
| 600     | 8        | 394    | ----   | 21.6         | 14.4      | 511             |  |      |                            |     | 1741 | 940  | 3207 |
|         | 10       | 486    | ----   | 27.0         | 18        | 638             |  |      |                            |     | 2177 | 1176 | 4009 |
|         | 12       | 578    | ----   | 32.4         | 21.6      | 766             | 2612   | 1411 | 4811                       |     |      |      |      |
|         | 17       | 808    | ----   | 45.9         | 30.6      | 1085            | 3701   | 1999 | 6816                       |     |      |      |      |
|         | 21       | 992    | ----   | 56.7         | 37.8      | 1341            | 4572   | 2469 | 8419                       |     |      |      |      |
|         | 25       | 1176   | ----   | 67.5         | 45        | 1596            | 5442   | 2939 | 10023                      |     |      |      |      |
| 750     | 8        | 394    | ----   | 27.2         | 17.6      | 628             | 2141   | 1156 | 3942                       |     |      |      |      |
|         | 10       | 486    | ----   | 34.0         | 22        | 785             | 2675   | 1445 | 4927                       |     |      |      |      |
|         | 12       | 578    | ----   | 40.8         | 26.4      | 942             | 3211   | 1734 | 5913                       |     |      |      |      |
|         | 17       | 808    | ----   | 57.8         | 37.4      | 1334            | 4548   | 2456 | 8376                       |     |      |      |      |
|         | 21       | 992    | ----   | 71.4         | 46.2      | 1648            | 5618   | 3034 | 10347                      |     |      |      |      |
|         | 25       | 1176   | ----   | 85.0         | 55        | 1961            | 6689   | 3612 | 12318                      |     |      |      |      |

Product codes to be confirmed at time of quotation/order.

|   |         |   |          |                                     |  |
|---|---------|---|----------|-------------------------------------|--|
|  | Stocked |  | To order | <b>Max Working Pressure:</b> 10 bar | <b>Max Working Temp:</b> 110 degrees C |
|---|---------|---|----------|-------------------------------------|--|

VERTICAL COLUMN RANGE

| Columns  | Sections | Height | Length | Product Code | Weight KG | Water Content L | Output at $\Delta T_{30k}$ |      | Output at $\Delta T_{50k}$ |       |
|----------|----------|--------|--------|--------------|-----------|-----------------|----------------------------|------|----------------------------|-------|
|          |          |        |        |              |           |                 | Watts                      | BTU  | Watts                      | BTU   |
| 2 Column | 1500     | 8      | 394    | ----         | 17.6      | 11.2            | 462                        | 1577 | 852                        | 2904  |
|          |          | 10     | 486    | ----         | 26.4      | 14              | 578                        | 1972 | 1065                       | 3631  |
|          |          | 12     | 578    | ----         | 26.4      | 16.8            | 694                        | 2366 | 1278                       | 4357  |
|          |          | 17     | 808    | ----         | 37.4      | 23.8            | 983                        | 3351 | 1810                       | 6172  |
|          | 1800     | 8      | 394    | 190018       | 22        | 13              | 558                        | 1903 | 1022                       | 3487  |
|          |          | 10     | 486    | 190019       | 27        | 16              | 698                        | 2382 | 1277                       | 4357  |
|          |          | 12     | 578    | 190020       | 32        | 19              | 837                        | 2855 | 1532                       | 5227  |
|          |          | 17     | 808    | ----         | 37.4      | 23.8            | 983                        | 3351 | 1810                       | 6172  |
|          | 2000     | 8      | 394    | ----         | 23        | 14              | 580                        | 1977 | 1138                       | 3881  |
|          |          | 10     | 486    | ----         | 29        | 17              | 725                        | 2472 | 1423                       | 4852  |
|          |          | 12     | 578    | ----         | 35        | 20              | 870                        | 2968 | 1708                       | 5824  |
|          |          | 17     | 808    | ----         | 37.4      | 23.8            | 983                        | 3351 | 1810                       | 6172  |
| 2200     | 8        | 394    | ----   | 26           | 15        | 641             | 2186                       | 1258 | 4290                       |       |
|          | 10       | 486    | ----   | 32           | 19        | 801             | 2731                       | 1572 | 5361                       |       |
|          | 12       | 578    | ----   | 38           | 23        | 961             | 3277                       | 1886 | 6431                       |       |
|          | 17       | 808    | ----   | 37.4         | 23.8      | 983             | 3351                       | 1810 | 6172                       |       |
| 3 Column | 1500     | 8      | 394    | ----         | 21.6      | 21.6            | 628                        | 2141 | 1156                       | 3942  |
|          |          | 10     | 486    | ----         | 27.0      | 27              | 785                        | 2675 | 1445                       | 4927  |
|          |          | 12     | 578    | ----         | 32.4      | 32.4            | 942                        | 3211 | 1734                       | 5913  |
|          |          | 17     | 808    | ----         | 45.9      | 45.9            | 1334                       | 4548 | 2456                       | 8376  |
|          | 1800     | 8      | 394    | 190049       | 26        | 18              | 780                        | 2661 | 1389                       | 4739  |
|          |          | 10     | 486    | 190050       | 33        | 23              | 949                        | 2781 | 1736                       | 5923  |
|          |          | 12     | 578    | 190051       | 40        | 28              | 1138                       | 3882 | 2083                       | 7107  |
|          |          | 17     | 808    | ----         | 37.4      | 23.8            | 983                        | 3351 | 1810                       | 6172  |
|          | 2000     | 8      | 394    | ----         | 32        | 21              | 792                        | 2700 | 1550                       | 5286  |
|          |          | 10     | 486    | ----         | 40        | 26              | 989                        | 3374 | 1937                       | 6605  |
|          |          | 12     | 578    | ----         | 48        | 31              | 1187                       | 4048 | 2324                       | 7925  |
|          |          | 17     | 808    | ----         | 37.4      | 23.8            | 983                        | 3351 | 1810                       | 6172  |
| 2200     | 8        | 394    | ----   | 35           | 22        | 876             | 2986                       | 1714 | 5845                       |       |
|          | 10       | 486    | ----   | 44           | 28        | 1094            | 3731                       | 2142 | 7304                       |       |
|          | 12       | 578    | ----   | 53           | 34        | 1313            | 4477                       | 2570 | 8764                       |       |
|          | 17       | 808    | ----   | 37.4         | 23.8      | 983             | 3351                       | 1810 | 6172                       |       |
| 4 Column | 1800     | 8      | 394    | ----         | 42.4      | 24.8            | 1010                       | 3443 | 1860                       | 6341  |
|          |          | 10     | 486    | ----         | 53.0      | 31              | 1262                       | 4304 | 2324                       | 7926  |
|          |          | 12     | 578    | ----         | 63.6      | 37.2            | 1515                       | 5165 | 2789                       | 9512  |
|          |          | 17     | 808    | ----         | 37.4      | 23.8            | 983                        | 3351 | 1810                       | 6172  |
|          | 2000     | 8      | 394    | ----         | 46.4      | 27.2            | 1121                       | 3821 | 2064                       | 7037  |
|          |          | 10     | 486    | ----         | 58.0      | 34              | 1401                       | 4777 | 2580                       | 8797  |
|          |          | 12     | 578    | ----         | 69.6      | 40.8            | 1681                       | 5732 | 3096                       | 10556 |
|          |          | 17     | 808    | ----         | 37.4      | 23.8            | 983                        | 3351 | 1810                       | 6172  |
|          | 1800     | 8      | 394    | ----         | 52.0      | 31.2            | 1186                       | 4045 | 2184                       | 7449  |
|          |          | 10     | 486    | ----         | 65.0      | 39              | 1483                       | 5056 | 2731                       | 9312  |
|          |          | 12     | 578    | ----         | 78.0      | 46.8            | 1779                       | 6067 | 3277                       | 11174 |
|          |          | 17     | 808    | ----         | 37.4      | 23.8            | 983                        | 3351 | 1810                       | 6172  |
| 2000     | 8        | 394    | ----   | 57.6         | 34.4      | 1317            | 4490                       | 2425 | 8268                       |       |
|          | 10       | 486    | ----   | 72.0         | 43        | 1646            | 5612                       | 3031 | 10335                      |       |
|          | 12       | 578    | ----   | 86.4         | 51.6      | 1975            | 6734                       | 3637 | 12402                      |       |
|          | 17       | 808    | ----   | 37.4         | 23.8      | 983             | 3351                       | 1810 | 6172                       |       |
| 6 Column | 1800     | 8      | 394    | ----         | 61.6      | 37.6            | 1430                       | 4875 | 2633                       | 8978  |
|          |          | 10     | 486    | ----         | 77.0      | 47              | 1787                       | 6094 | 3291                       | 11223 |
|          |          | 12     | 578    | ----         | 92.4      | 56.4            | 2144                       | 7313 | 3949                       | 13467 |
|          |          | 17     | 808    | ----         | 37.4      | 23.8            | 983                        | 3351 | 1810                       | 6172  |
|          | 2000     | 8      | 394    | ----         | 68.8      | 41.6            | 1582                       | 5395 | 2914                       | 9936  |
|          |          | 10     | 486    | ----         | 86.0      | 52              | 1978                       | 6744 | 3642                       | 12420 |
|          |          | 12     | 578    | ----         | 103.2     | 62.4            | 2373                       | 8093 | 4371                       | 14904 |
|          |          | 17     | 808    | ----         | 37.4      | 23.8            | 983                        | 3351 | 1810                       | 6172  |

Product codes to be confirmed at time of quotation/order.

## TECHNICAL DATA

| Columns  | Height (mm) | Tappings centre (mm) | Empty Weight (kg) | Water Content | Output $\Delta t$ 50° | Output $\Delta t$ 30° |
|----------|-------------|----------------------|-------------------|---------------|-----------------------|-----------------------|
| 2 Column | 300         | 230                  | 0,5               | 0,4           | 24,3                  | 12,9                  |
|          | 400         | 330                  | 0,6               | 0,5           | 31,1                  | 16,4                  |
|          | 500         | 430                  | 0,8               | 0,6           | 38,0                  | 20,0                  |
|          | 600         | 530                  | 0,9               | 0,7           | 44,8                  | 23,5                  |
|          | 750         | 680                  | 1,1               | 0,8           | 55,0                  | 28,7                  |
|          | 800         | 730                  | 1,2               | 0,8           | 58,4                  | 30,5                  |
|          | 900         | 830                  | 1,4               | 0,9           | 65,1                  | 33,9                  |
|          | 1000        | 930                  | 1,5               | 1,0           | 72,1                  | 37,4                  |
|          | 1200        | 1130                 | 1,8               | 1,1           | 85,6                  | 44,2                  |
|          | 1500        | 1430                 | 2,2               | 1,4           | 106,4                 | 54,6                  |
|          | 1800        | 1730                 | 2,6               | 1,6           | 127,7                 | 65,0                  |
|          | 2000        | 1930                 | 2,9               | 1,7           | 142,3                 | 72,5                  |
|          | 2200        | 2130                 | 3,2               | 1,9           | 157,2                 | 80,1                  |
| 2500     | 2430        | 3,6                  | 2,1               | 180,1         | 91,8                  |                       |
| 2800     | 2730        | 4,0                  | 2,3               | 203,9         | 104,0                 |                       |
| 3000     | 2930        | 4,3                  | 2,4               | 217,9         | 111,1                 |                       |
| 3 Column | 300         | 230                  | 0,5               | 0,6           | 33,1                  | 17,5                  |
|          | 400         | 330                  | 0,8               | 0,7           | 42,3                  | 22,3                  |
|          | 500         | 430                  | 1,0               | 0,8           | 51,6                  | 27,1                  |
|          | 600         | 530                  | 1,3               | 1,0           | 60,8                  | 31,9                  |
|          | 750         | 680                  | 1,4               | 1,1           | 74,5                  | 38,9                  |
|          | 800         | 730                  | 1,8               | 1,2           | 79,1                  | 41,3                  |
|          | 900         | 830                  | 1,7               | 1,3           | 88,2                  | 45,9                  |
|          | 1000        | 930                  | 2,1               | 1,4           | 97,4                  | 50,6                  |
|          | 1200        | 1130                 | 2,5               | 1,6           | 116,0                 | 60,0                  |
|          | 1500        | 1430                 | 2,7               | 2,0           | 144,4                 | 74,3                  |
|          | 1800        | 1730                 | 3,3               | 2,3           | 173,6                 | 88,7                  |
|          | 2000        | 1930                 | 4,0               | 2,6           | 193,7                 | 99,0                  |
|          | 2200        | 2130                 | 4,4               | 2,8           | 214,2                 | 109,6                 |
| 2500     | 2430        | 4,8                  | 3,2               | 246,0         | 126,1                 |                       |
| 2800     | 2730        | 5,3                  | 3,6               | 279,0         | 143,2                 |                       |
| 3000     | 2930        | 6,0                  | 3,8               | 301,8         | 155,1                 |                       |
| 4 Column | 300         | 230                  | 0,9               | 0,8           | 42,3                  | 22,3                  |
|          | 400         | 330                  | 1,2               | 0,9           | 55,5                  | 29,2                  |
|          | 500         | 430                  | 1,5               | 1,1           | 68,3                  | 35,8                  |
|          | 600         | 530                  | 1,8               | 1,2           | 81,1                  | 42,4                  |
|          | 750         | 680                  | 2,2               | 1,5           | 100,0                 | 52,1                  |
|          | 800         | 730                  | 2,4               | 1,6           | 106,3                 | 55,3                  |
|          | 900         | 830                  | 2,6               | 1,7           | 118,9                 | 61,7                  |
|          | 1000        | 930                  | 2,9               | 1,9           | 131,5                 | 68,0                  |
|          | 1200        | 1130                 | 3,5               | 2,2           | 156,6                 | 80,7                  |
|          | 1500        | 1430                 | 4,4               | 2,7           | 194,3                 | 99,6                  |
|          | 1800        | 1730                 | 5,3               | 3,1           | 232,3                 | 118,5                 |
|          | 2000        | 1930                 | 5,8               | 3,4           | 257,8                 | 131,7                 |
|          | 2200        | 2130                 | 6,3               | 3,8           | 283,5                 | 145,1                 |
| 2500     | 2430        | 7,1                  | 4,2               | 322,3         | 165,5                 |                       |
| 2800     | 2730        | 7,8                  | 4,7               | 361,6         | 186,2                 |                       |
| 3000     | 2930        | 8,4                  | 5,0               | 388,1         | 200,3                 |                       |

| Columns  | Height (mm) | Tappings centre (mm) | Empty Weight (kg) | Water Content | Output $\Delta t$ 50° | Output $\Delta t$ 30° |
|----------|-------------|----------------------|-------------------|---------------|-----------------------|-----------------------|
| 5 Column | 300         | 230                  | 1,2               | 1,0           | 51,9                  | 27,4                  |
|          | 400         | 330                  | 1,6               | 1,2           | 67,2                  | 35,3                  |
|          | 500         | 430                  | 1,9               | 1,4           | 82,2                  | 43,0                  |
|          | 600         | 530                  | 2,3               | 1,6           | 97,0                  | 50,5                  |
|          | 750         | 680                  | 2,8               | 1,8           | 119,0                 | 61,5                  |
|          | 800         | 730                  | 3,1               | 1,9           | 126,3                 | 65,2                  |
|          | 900         | 830                  | 3,3               | 2,1           | 140,8                 | 72,4                  |
|          | 1000        | 930                  | 3,7               | 2,3           | 155,4                 | 79,5                  |
|          | 1200        | 1130                 | 4,4               | 2,7           | 184,5                 | 94,0                  |
|          | 1500        | 1430                 | 5,5               | 3,3           | 228,4                 | 115,7                 |
|          | 1800        | 1730                 | 6,5               | 3,9           | 272,9                 | 137,3                 |
|          | 2000        | 1930                 | 7,2               | 4,3           | 302,9                 | 152,9                 |
|          | 2200        | 2130                 | 7,9               | 4,7           | 333,3                 | 168,8                 |
| 2500     | 2430        | 9,0                  | 5,3               | 379,7         | 193,3                 |                       |
| 2800     | 2730        | 10,1                 | 5,9               | 427,1         | 218,5                 |                       |
| 3000     | 2930        | 10,8                 | 6,2               | 459,3         | 235,7                 |                       |
| 6 Column | 300         | 230                  | 1,5               | 1,1           | 62,3                  | 32,7                  |
|          | 400         | 330                  | 1,9               | 1,3           | 81,0                  | 42,3                  |
|          | 500         | 430                  | 2,3               | 1,6           | 99,4                  | 51,7                  |
|          | 600         | 530                  | 2,7               | 1,8           | 117,5                 | 60,9                  |
|          | 750         | 680                  | 3,4               | 2,2           | 144,4                 | 74,4                  |
|          | 800         | 730                  | 3,8               | 2,3           | 153,3                 | 78,8                  |
|          | 900         | 830                  | 4,0               | 2,5           | 171,0                 | 87,5                  |
|          | 1000        | 930                  | 4,4               | 2,8           | 188,6                 | 96,1                  |
|          | 1200        | 1130                 | 5,2               | 3,3           | 223,8                 | 113,9                 |
|          | 1500        | 1430                 | 6,5               | 4,0           | 276,3                 | 140,4                 |
|          | 1800        | 1730                 | 7,7               | 4,7           | 328,9                 | 166,8                 |
|          | 2000        | 1930                 | 8,6               | 5,2           | 364,0                 | 184,7                 |
|          | 2200        | 2130                 | 9,5               | 5,7           | 399,2                 | 202,8                 |
| 2500     | 2430        | 10,8                 | 6,4               | 452,4         | 229,9                 |                       |
| 2800     | 2730        | 12,1                 | 7,2               | 505,9         | 257,2                 |                       |
| 3000     | 2930        | 13,3                 | 7,7               | 541,9         | 275,8                 |                       |

## RELIABILITY

Towelrads Radiators tests the tightness of every single Multi Column coming out of the assembly line to grant the best quality and performance:

- State of the art welding technologies, no filler materials used: head to head laser welding and head to tube capacity discharge welding.
- No risk of corrosion and erosion of the filler materials, a serious threat to the durability of the entire heating system.
- No aesthetic flaws on the welded surfaces due to the filler material: Multi Column shapes are smooth and flawless.

## HYDRAULIC CONNECTIONS

Towelrads Radiators offers an entire catalogue of accessories to connect the radiators to the central heating system.



1. Head to head welding
2. Element to element welding
3. Head to tube welding



10 YEARS  
MANUFACTURERS WARRANTY



WIDE RANGE



ALL THE COLORS OF WARMTH



DIFFERENT AESTHETIC SOLUTIONS



PERFECT FOR ANY REPLACEMENT



VALVE + LOCK-SHIELD KIT

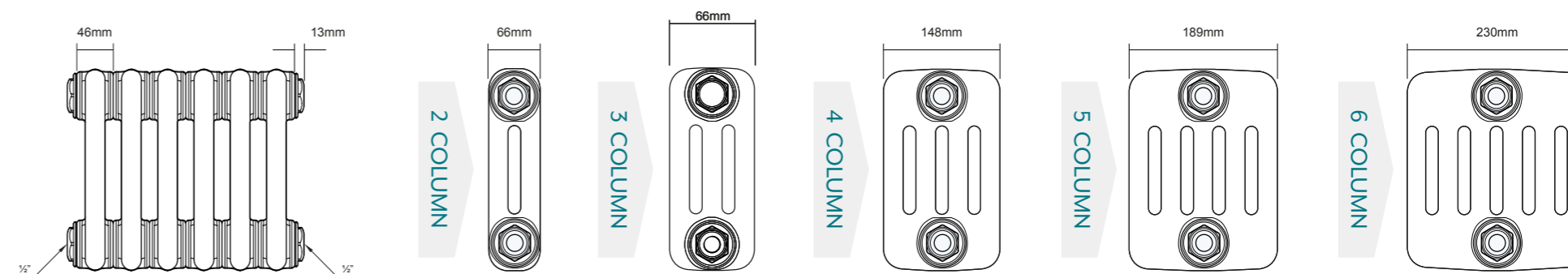


CONNECTIONS FOR COPPER/MULTILAYER PIPE



TEMPERATURE CONTROL SYSTEM

## TECHNICAL DIAGRAMS WINDSOR MULTICOLUMN COLLECTION





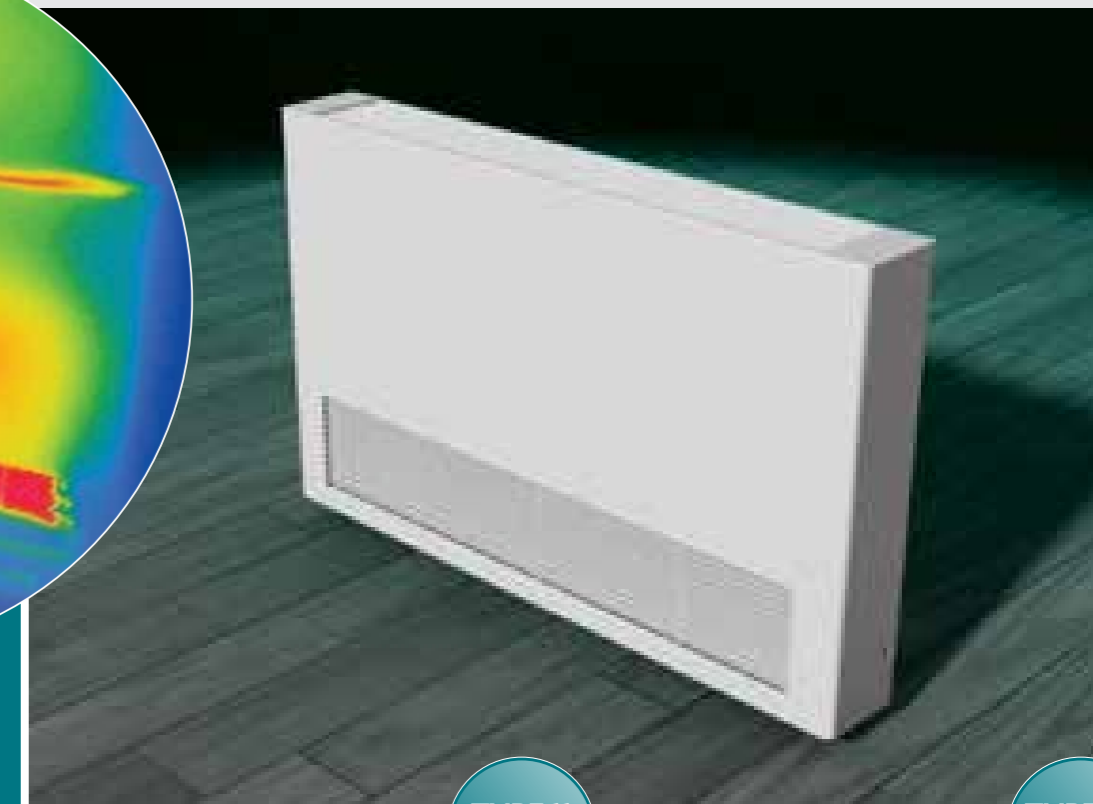
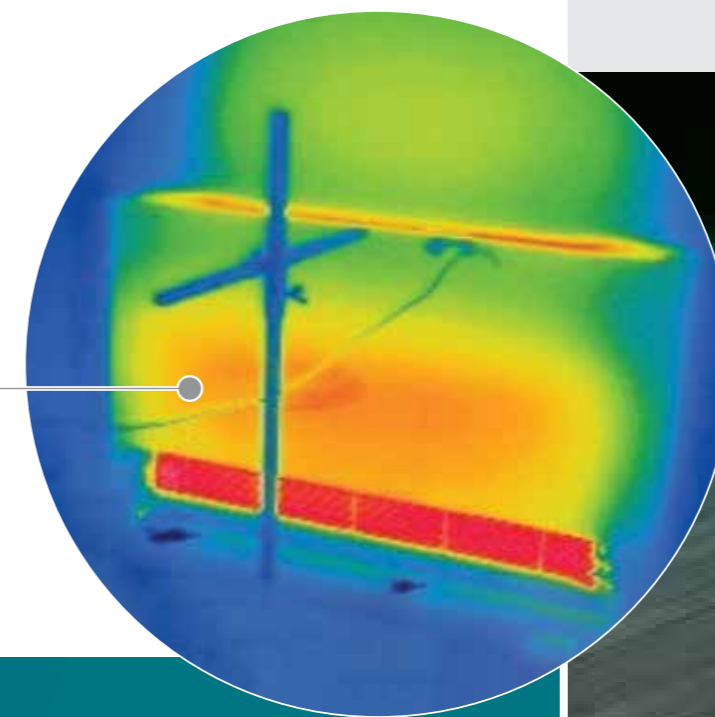


  
**Towelrads**

## ULTRA LST COLLECTION

The Towelrads Ultra LST product is a state-of-the-art Low Surface Temperature Radiator solution where protecting the vulnerable is a priority. The Ultra LST is tested and certified to the latest NHS Estates "Safe" criteria which supersedes the previous DN4 testing standard. This ensures no part of the casing will exceed 43 degrees at any time guaranteeing maximum safety and peace of mind.

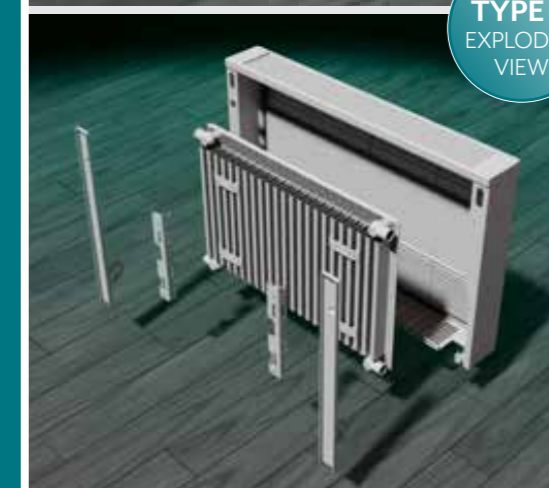
Thermographic image of 800mm casing demonstrating no "hot spots" during improved NHS testing criteria



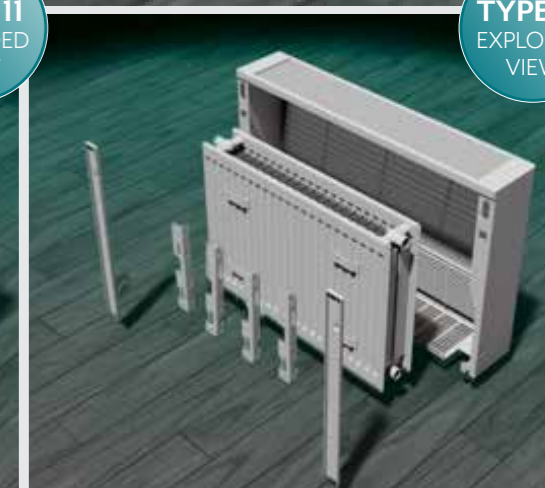
### FEATURES AND BENEFITS:

- The Ultra LST is available in 3 heights (500mm, 650mm and 800mm) and in eight lengths from 600mm to 2000mm wide, with the option of a plinth and a choice of 2 TRVs (external as standard).
- Internal Standard compact radiator EN442 certified including wall brackets.
- Two stage installation process meaning emitters can be initially installed and covers delivered to site only when required for second fix, reducing any storage on site and eliminating risk of damage.
- Casings can be retro fitted to existing radiator installations if necessary.
- New wipe clean case design with no sharp edges.
- "Easy Clean" facility where the casing Cover drops forward on fully supported hinge system allowing one-person easy access cleaning.
- Cover hinges are fully retractable allowing complete removal for deep cleaning.
- RAL 9016 robust 1.5mm single piece powder coated casing included with an antimicrobial coating.
- Fully compliant to NHS 'Safe' Hot Water And Surface Temperatures Health Guidance 1998 and HSE Health Services Information Sheet No.6 'Managing The Risks from Hot Water And Surfaces In Health & Social Care'.
- Secure locking system to prevent unauthorised access to the internal TRV.
- Surface temperature below 43°C at Dt50 80°C/60°C/20°C or 75°C/65°C/20°C.
- Universal internal capillary TRV capability.
- No need for a plinth, with front facing bottom grille set 50mm off the floor.
- One Single casing depth 130mm suits both T11 and T22 radiator types.
- Outputs certified and CE marked to EN442, independently tested by EN442 accredited test laboratory.
- High pressure capability 10 bar working pressure.
- 5 year warranty on casing and 10 year warranty on the emitter.
- Covers now supplied with heavy duty pencil proof bar grilles to maximise airflow, maximum aperture 7mm.
- All covers supplied with bottom grille to prevent access to the emitter in full compliance to NHS Estates Guidelines.
- Available with 1/2" BSP x 15mm angled tamper proof internal capillary TRV or external capillary TRV that can be fitted LH or RH with matching lock shield valve.

**TYPE 11**  
EXPLODED  
VIEW



**TYPE 22**  
EXPLODED  
VIEW



# OPTIONS

Ultra LST is available with a choice of internal and external thermostatic valves. These valves are unidirectional and must always be fitted to the flow side of the emitter.

The external control head consists of a 15mm angled valve fitted to the emitter inside the LST cover and linked by capillary tube to an external TRV head. This can be positioned on either side of the cover and emitter. The temperature head can be pre-set to the desired temperature and locked. These valves are unsuitable for single pipe systems.

The internal control head consists of a 15mm angled valve body control head fitted to the emitter inside the cover. It features an internal capillary sensor that is attached to the underside of the cover to measure the inlet air temperature. The control head can be pre-set to the desired temperature and is tamper-proof.



**ACVK1**  
Lockable remote sensing with L/S



**ACVK2**  
Lockable internal sensing with L/S



Bespoke plinth / pipework concealers / protectors available on request

### LST Casing Options – Price on Application

**LST Heavy Duty 2mm casing**  
The Ultra LST is also available with a heavy duty 2mm casing for those high traffic areas where extra durability is required

**LST Super Heavy Duty 2.5mm casing**  
The LST Ultra can also be manufactured with a 2.5mm Super Heavy Duty casing for those installations where reinforced casing strength is paramount

**LST Anti-Corrosion**  
For areas of high humidity, the LST Ultra Anti Corrosion product is the ideal solution. The casing is finished with a Zintec coating to enable an anti-rust finish where required.

### Optional RAL Finishes Available

|          |                  |
|----------|------------------|
| RAL 1013 | Oyster White     |
| RAL 1023 | Traffic Yellow   |
| RAL 3000 | Flame Red        |
| RAL 5002 | Ultramarine Blue |
| RAL 7016 | Anthracite Grey  |
| RAL 7032 | Pebble Grey      |
| RAL 7035 | Light Grey       |
| RAL 8017 | Chocolate Brown  |
| RAL 9005 | Jet Black        |

|                  |  |
|------------------|--|
| Cover Heights    | 500mm, 650mm, 800mm  |
| Cover Depth      | 130mm  |
| Cover Lengths    | 600mm, 800mm, 1000mm, 1200mm, 1400mm, 1600mm, 1800mm, 2000mm   |
| Emitter Lengths  | 400mm, 600mm, 800mm, 1000mm, 1200mm, 1400mm, 1600mm, 1800mm  |
| Emitter Type     | Standard Compact Radiator 442 certified  |
| Brackets         | Wall brackets mounted on the short side (25mm – t22 special)   |
| Connections      | BOE (bottom opposite end), ½" BSP  |
| Wall mounted     | Minimum 50mm off the floor   |
| Options          | ½" BSP x 15mm angled external capillary TRV kit / internal capillary TRV kit<br>½" BSP x 15mm angled lock shield valve<br>Plinth lengths 600mm – 2000mm, 75mm deep |
| Vertical Options | 2100 Height Lengths 400w 600w 800w Type 20   |

# TECHNICAL SPECIFICATIONS

## ULTRA LST COLLECTION

| Product Code | Casing Height | Casing Length | Emitter Height | Emitter Length | T50k watts | BTU T50 |
|--------------|---------------|---------------|----------------|----------------|------------|---------|
| 650000       | 500           | 600           | 300            | 400            | 187        | 638     |
| 650001       |               | 800           | 300            | 600            | 281        | 959     |
| 650002       |               | 1000          | 300            | 800            | 374        | 1276    |
| 650003       |               | 1200          | 300            | 1000           | 468        | 1597    |
| 650004       |               | 1400          | 300            | 1200           | 562        | 1918    |
| 650005       |               | 1600          | 300            | 1400           | 655        | 2235    |
| 650006       |               | 1800          | 300            | 1600           | 749        | 2556    |
| 650007       | 2000          | 300           | 1800           | 842            | 2873       |         |
| 650008       | 650           | 600           | 400            | 400            | 244        | 833     |
| 650009       |               | 800           | 400            | 600            | 366        | 1249    |
| 650010       |               | 1000          | 400            | 800            | 488        | 1665    |
| 650011       |               | 1200          | 400            | 1000           | 610        | 2081    |
| 650012       |               | 1400          | 400            | 1200           | 732        | 2498    |
| 650013       |               | 1600          | 400            | 1400           | 854        | 2914    |
| 650014       |               | 1800          | 400            | 1600           | 976        | 3330    |
| 650015       | 2000          | 400           | 1800           | 1098           | 3746       |         |
| 650016       | 800           | 600           | 500            | 400            | 284        | 969     |
| 650017       |               | 800           | 500            | 600            | 426        | 1454    |
| 650018       |               | 1000          | 500            | 800            | 568        | 1938    |
| 650019       |               | 1200          | 500            | 1000           | 710        | 2423    |
| 650020       |               | 1400          | 500            | 1200           | 852        | 2907    |
| 650021       |               | 1600          | 500            | 1400           | 994        | 3392    |
| 650022       |               | 1800          | 500            | 1600           | 1136       | 3876    |
| 650023       | 2000          | 500           | 1800           | 1278           | 4361       |         |

| Product Code | Casing Height | Casing Length | Emitter Height | Emitter Length | T50k watts | BTU T50 |
|--------------|---------------|---------------|----------------|----------------|------------|---------|
| 650024       | 500           | 600           | 300            | 400            | 340        | 1160    |
| 650025       |               | 800           | 300            | 600            | 509        | 1737    |
| 650026       |               | 1000          | 300            | 800            | 678        | 2313    |
| 650027       |               | 1200          | 300            | 1000           | 848        | 2893    |
| 650028       |               | 1400          | 300            | 1200           | 1018       | 3473    |
| 650029       |               | 1600          | 300            | 1400           | 1187       | 4050    |
| 650030       |               | 1800          | 300            | 1600           | 1357       | 4630    |
| 650031       | 2000          | 300           | 1800           | 1526           | 5207       |         |
| 650032       | 650           | 600           | 400            | 400            | 461        | 1573    |
| 650033       |               | 800           | 400            | 600            | 692        | 2361    |
| 650034       |               | 1000          | 400            | 800            | 922        | 3146    |
| 650035       |               | 1200          | 400            | 1000           | 1153       | 3934    |
| 650036       |               | 1400          | 400            | 1200           | 1384       | 4722    |
| 650037       |               | 1600          | 400            | 1400           | 1614       | 5507    |
| 650038       |               | 1800          | 400            | 1600           | 1845       | 6295    |
| 650039       | 2000          | 400           | 1800           | 2075           | 7080       |         |
| 650040       | 800           | 600           | 500            | 400            | 560        | 1911    |
| 650041       |               | 800           | 500            | 600            | 840        | 2866    |
| 650042       |               | 1000          | 500            | 800            | 1120       | 3821    |
| 650043       |               | 1200          | 500            | 1000           | 1400       | 4777    |
| 650044       |               | 1400          | 500            | 1200           | 1680       | 5732    |
| 650045       |               | 1600          | 500            | 1400           | 1960       | 6688    |
| 650046       |               | 1800          | 500            | 1600           | 2240       | 7643    |
| 650047       | 2000          | 500           | 1800           | 2520           | 8598       |         |

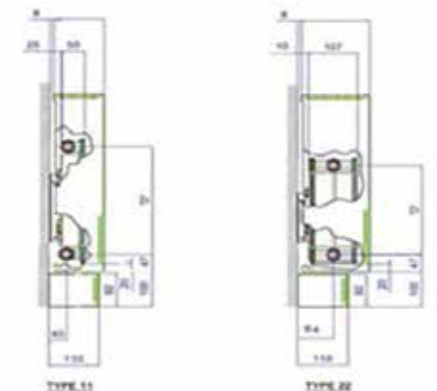
|        | Code   | Plinth Height | Plinth Width |
|--------|--------|---------------|--------------|
| Plinth | LSTP06 | 100           | 600          |
|        | LSTP08 | 100           | 800          |
|        | LSTP10 | 100           | 1000         |
|        | LSTP12 | 100           | 1200         |
|        | LSTP14 | 100           | 1400         |
|        | LSTP16 | 100           | 1600         |
|        | LSTP18 | 100           | 1800         |
|        | LSTP20 | 100           | 2000         |

|  |       |
|--|-------|
| Internal Sensing Valve Kit 15mm inc Lockshield | ACVK2 |
| 2m Capillary Valve Kit 15mm Inc Lockshield     | ACVK1 |

# TECHNICAL DIAGRAMS

**Dimensional information**  
Features Emitter, Cover and Optional Plinth

**Ultra LST 130mm depth case**  
Heat Emitter length = Case L- 200mm





## PISA LADDER COLLECTION

The Pisa range of towel radiators provides a mixture of contemporary style combined with high heat output practicality. The broad range of heights, widths and finishes make it the perfect fit for any bathroom space.

### FEATURES AND BENEFITS:

- Classic ladder towel radiator for stylish, contemporary bathrooms
- Wide range of heights, widths and finishes available to suit any space
- 25mm bars give much better heat output than standard towel radiators with 19mm and 22mm tubes
- An even higher output can be achieved by opting for one of our popular modern painted finishes
- Horizontal models also available to fit neatly under windows
- Can be connected to central heating or used with a dual fuel element for versatility
- Plenty of towel warming space
- Curved towel radiators also available in this range
- 10 Year Guarantee



MANUFACTURERS  
WARRANTY



CENTRAL  
HEATING



DUAL FUEL



FREE NEXT  
DAY DELIVERY

## OPTIONS

### COLOURS

AVAILABLE IN:



Chrome



White



Black



Anthracite

### VALVE OPTIONS

Please see page 44-45 for our full range of appropriate valve styles.



SEE  
PAGE  
44-45

DUAL  
FUEL  
OPTION



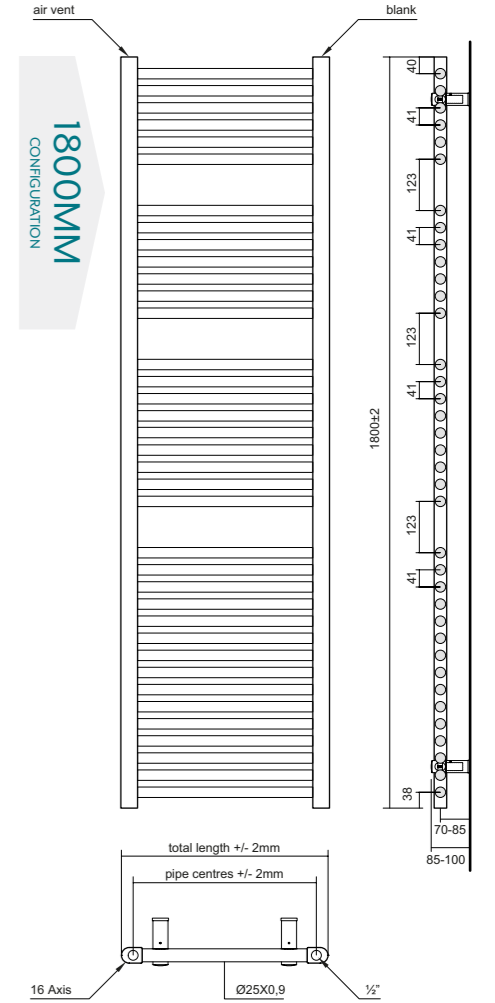
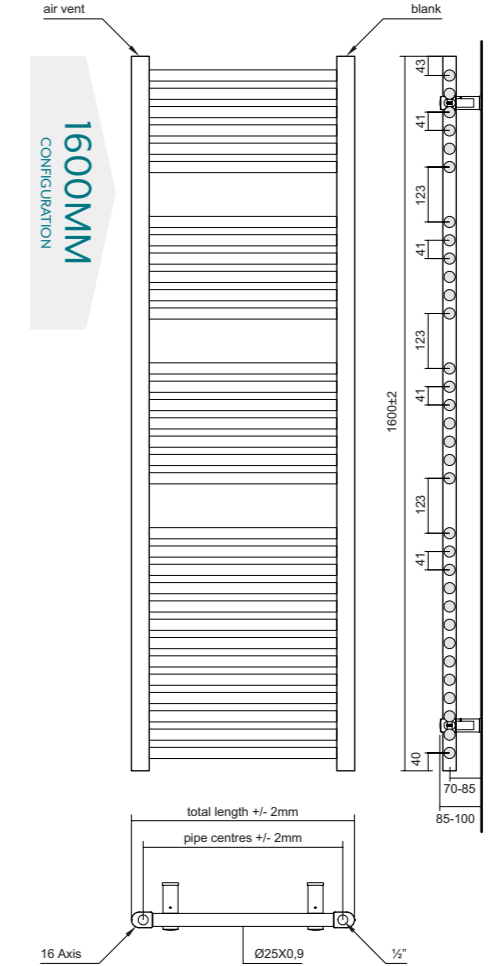
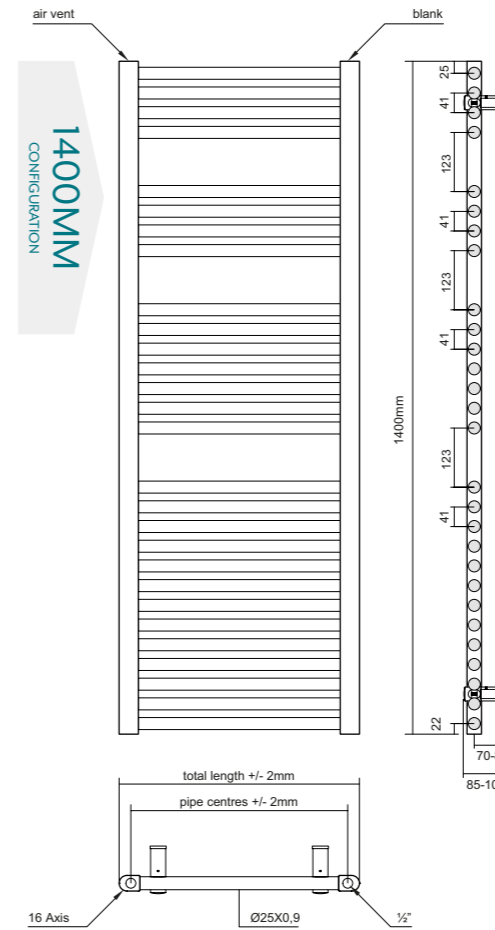
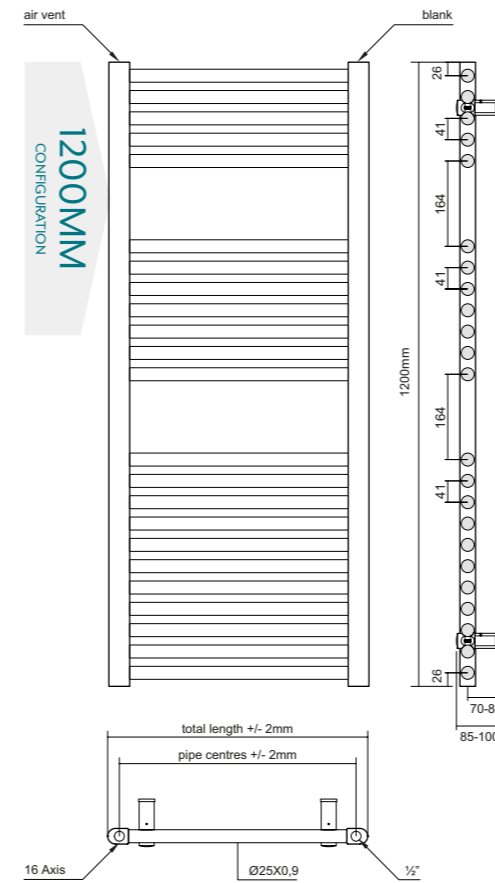
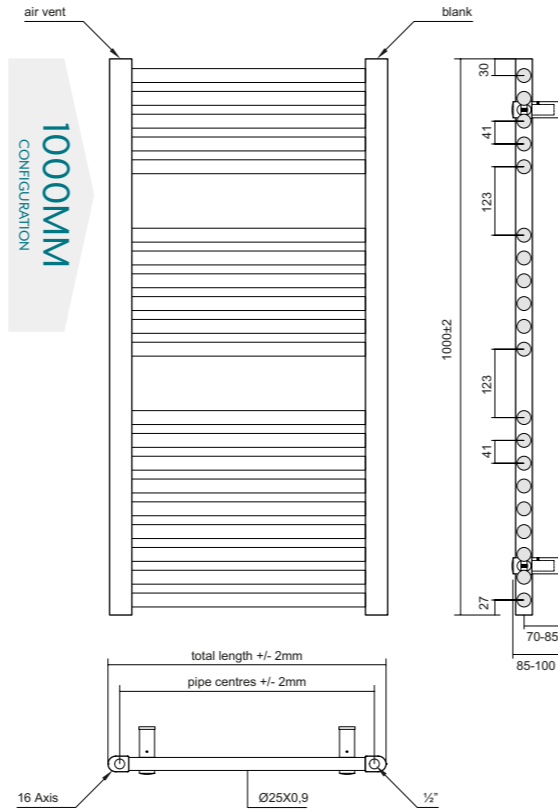
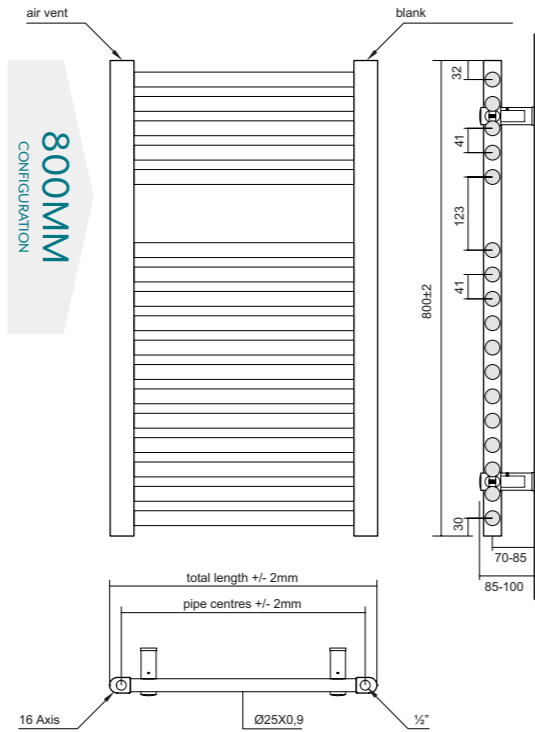
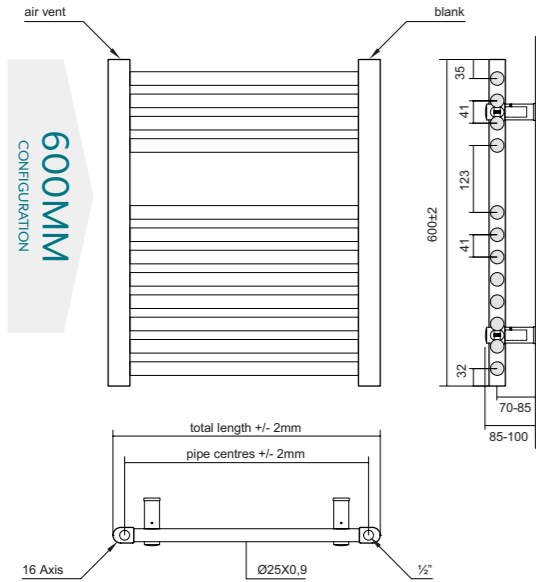
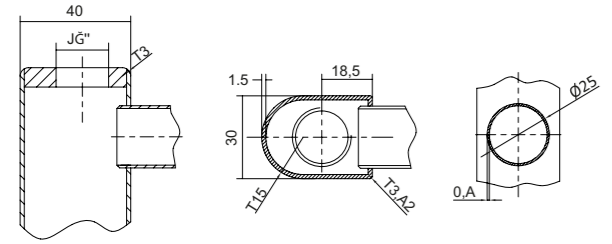


# TECHNICAL DIAGRAMS

## PISA LADDER COLLECTION

The Pisa range of towel radiators are perfect for specifiers who need a high output towel rail in a wide choice of heights, widths and finishes. Shown below are our technical diagrams for each Pisa height, a choice of widths is available in each variant.

We also have a range of curved Pisas - please take a look at our website or general brochure for more information.





# TOWELRADS EXTENSIVE PRODUCT RANGE

Here at Towelrads we have an extensive range of towelrails to suit all systems and applications, from traditional towel rails for Central Heating Systems to dual fuel models, electric only, an LST Towelrail and a range of Stainless Steel Towel Rails. To see the full range of Towel rails we supply please visit our website at [www.towelrads.com](http://www.towelrads.com)



# VALVE OPTIONS

| Product | Colour         | Code              | Product | Colour         | Code   | Product | Colour         | Code   |
|---------|----------------|-------------------|---------|----------------|--------|---------|----------------|--------|
|         | Chrome         | 125006/<br>125002 |         | Brushed Nickel | 129019 |         | Antique Brass  | 129119 |
|         | Chrome         | 125005/<br>125001 |         | Brushed Nickel | 129024 |         | Antique Copper | 129120 |
|         | Chrome         | 129022            |         | Black          | 129017 |         | Black Nickel   | 129040 |
|         | White          | 125008/<br>125004 |         | Black          | 129020 |         | Black Nickel   | 129118 |
|         | White          | 125007/<br>125003 |         | Black          | 123003 |         | Black Nickel   | 129043 |
|         | White          | 129023            |         | Anthracite     | 125019 |         | Chrome         | 129101 |
|         | Brushed Nickel | 129016            |         | Silver Nickel  | 129117 |         | Chrome         | 129037 |

# SMART ELEMENTS

## SMART THERMOSTATIC

### FUNCTIONALITY

- The heater offers five temperature settings from 30 °C to 65 °C.
- An electronic temperature sensor ensures precise temperature control.
- The device displays the temperature to which it is currently set, and indicates the status of the heating cycle.
- Comes with 2 hour boost, 12/24 hour recurring timer.

### INTELLIGENT HOME SYSTEMS

In the event of a power failure the heating device remembers the most recent settings used, which makes it suitable for connection to external timers or intelligent home systems.

### SAFETY

The heater has an active safety feature which initiates in the event of dry radiator operation. The heating element is equipped with a temperature sensor and thermal fuse (double overheating protection) and offers frost protection (ANTIFREEZE). The heater will display warning indicators in the case of malfunction.

### DESIGN

A heater with a straight cable, without a plug is supplied.

| Code   | Colour     | Output (Watts) | IP Rating |
|--------|------------|----------------|-----------|
| 126007 | Chrome     | 150            | 44        |
| 126008 | Chrome     | 300            | 44        |
| 126009 | Chrome     | 600            | 44        |
| 126010 | Chrome     | 1000           | 44        |
| 126011 | White      | 300            | 44        |
| 126012 | White      | 600            | 44        |
| 126013 | White      | 1000           | 44        |
| 126039 | Black      | 300            | 44        |
| 126040 | Black      | 600            | 44        |
| 126041 | Anthracite | 300            | 44        |
| 126042 | Anthracite | 600            | 44        |



TOWELRADS OFFER A VAST NUMBER OF VALVES AND ACCESSORIES FOR ALL RADIATOR AND TOWEL RAIL APPLICATIONS

FOR THE FULL RANGE OF PRODUCTS VISIT US ONLINE AT [TOWELRADS.COM](http://TOWELRADS.COM)



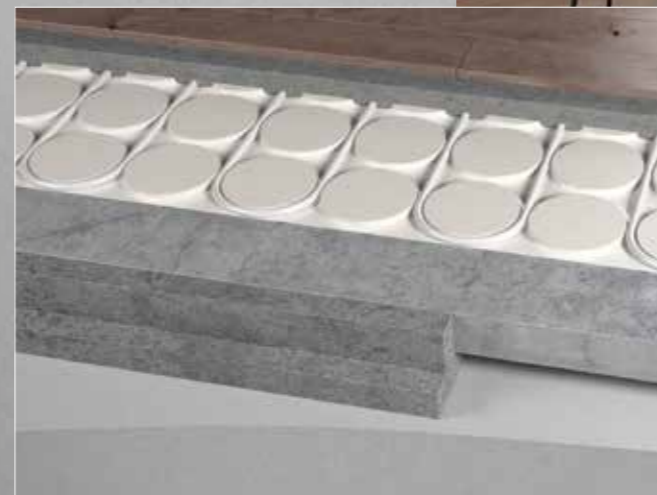
## UNDERFLOOR HEATING

Towelrads supply base ufh underfloor heating systems. A leading underfloor heating systems supplier meeting the exact requirements of your project with individually tailored solutions.

From detailed information acquired from site survey, project drawings and relevant information, we offer a complete underfloor heating system and full cad design.

We offer an unrivalled level of customer service and technical support throughout every stage of your project.

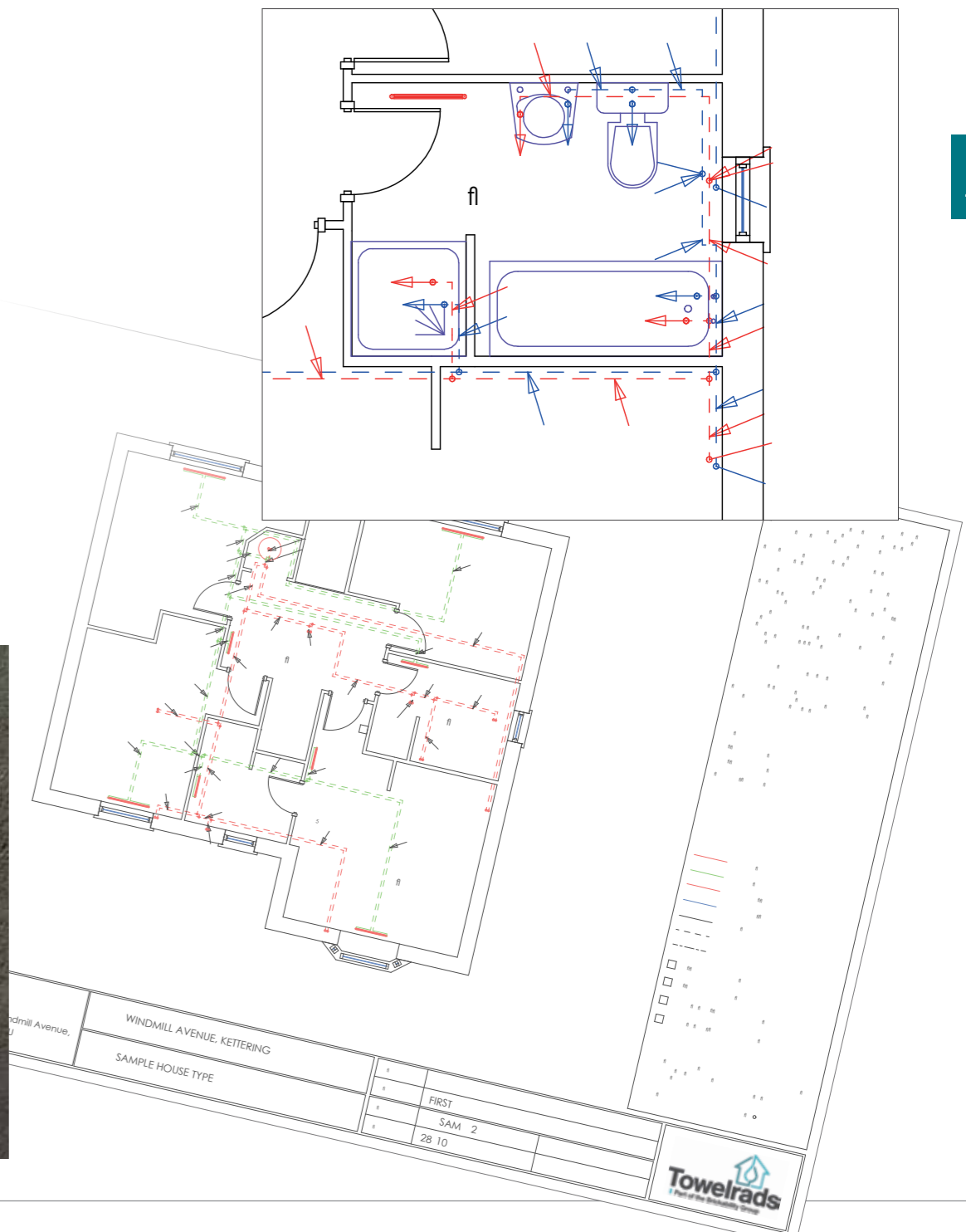
With a vast range of underfloor heating systems, we are able to design and supply suitable products to suit any floor construction and building type. Where required we can also offer an installation service if needed.



## HEATING DESIGN SERVICE

Towelrads offer a fully-indemnified heating and plumbing design service. Using radiators and / or towel rails from the Towelrads range, our design service will provide radiator schedules, equipment schedules, heating drawings, hot & cold water services drawings and a full design specification free of charge.

As the design service is independent, we can provide the designs using any manufacturer of boiler, heat pump, cylinder, solar panel system and any associated heating & plumbing system products, such as pumps, plastic pipework and controls. All our designs can be integrated with our underfloor heating systems and radiator circuits. All designs are available in a range of formats, for integration into a customer's working drawing package. The design service is able to provide 3D BIM / Revit based designs, overlaying our heating & plumbing designs over the associated house type cad drawings. We are the only design service able to offer this service in-house. Our design company has a wide, long-standing knowledge of heat pump systems, which will become important as the domestic house building market moves towards a non-gas future.





# BATHROOM TOWEL RAILS AND DESIGNER RADIATORS

Whether you want contemporary designer towel rails or traditional style radiators, we stock a large selection of high-quality designs to complement today's interiors, adding that luxurious appeal and transforming your bathroom, kitchen, living room or hallway.



CENTRAL HEATING



ELECTRIC



DUAL FUEL



INFRARED



FREE NEXT DAY DELIVERY



VIEW ONLINE

Towelrads.com Ltd, Queensgate House, Cookham Road, Bracknell, Berkshire RG12 1RB

Telephone: 01628 625 367

Fax: 01628 659 520

[www.towelrads.com](http://www.towelrads.com)

All prices are exclusive of VAT. Products listed are stocked in the UK and will be dispatched within 48 hours. Non stocked products have a typical lead time of 6 weeks.

Prices, information and specifications are correct at the time of going to print and may be subject to change. Product guarantee covers manufacturing or material defects only and does not cover defects caused by installation error.

\* Non-mainland UK carriage charges are calculated on total weight of order.