

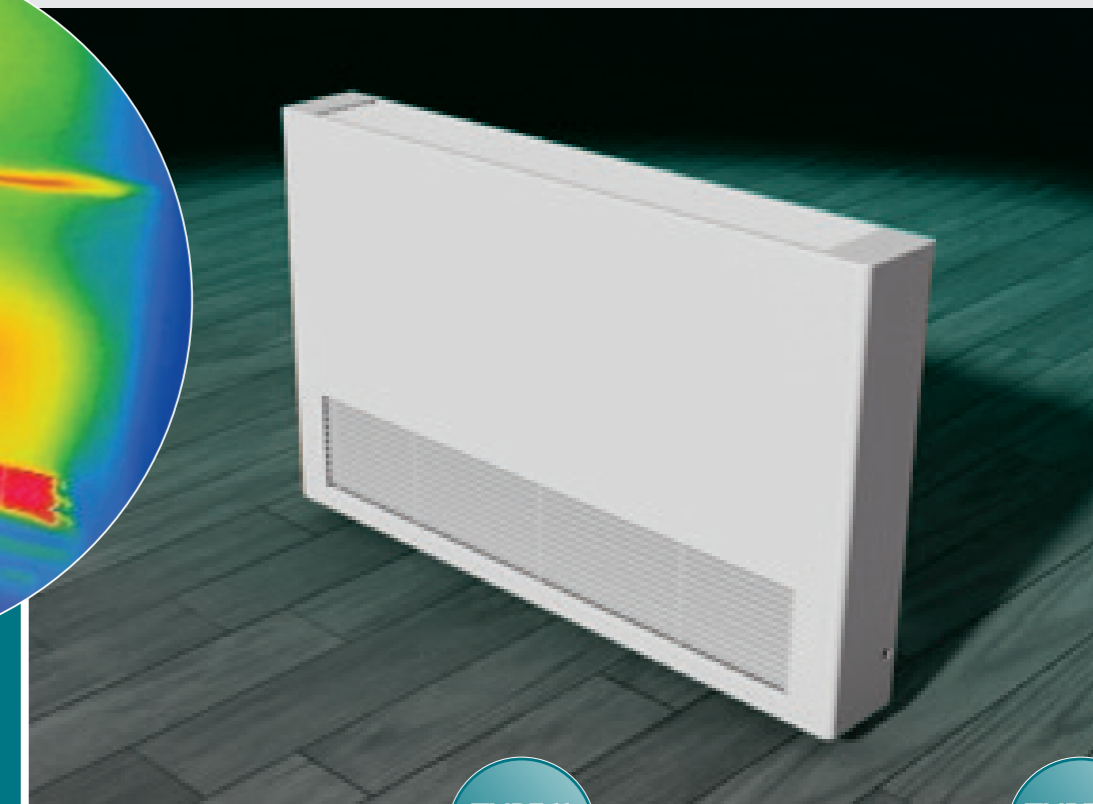
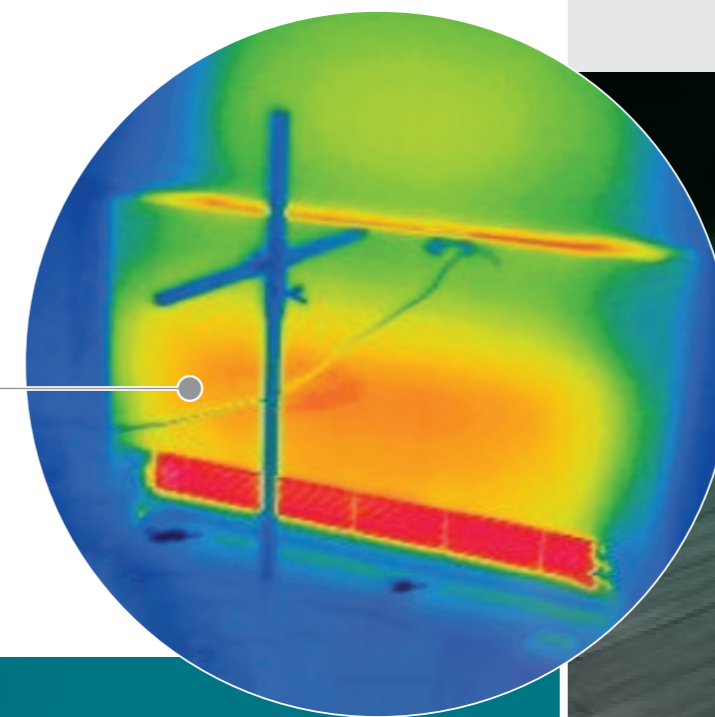


  
**Towelrads**

## ULTRA LST COLLECTION

The Towelrads Ultra LST product is a state-of-the-art Low Surface Temperature Radiator solution where protecting the vulnerable is a priority. The Ultra LST is tested and certified to the latest NHS Estates "Safe" criteria which supersedes the previous DN4 testing standard. This ensures no part of the casing will exceed 43 degrees at any time guaranteeing maximum safety and peace of mind.

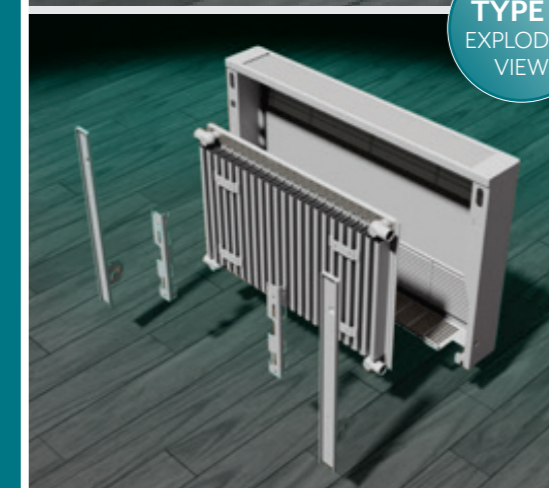
Thermographic image of 800mm casing demonstrating no "hot spots" during improved NHS testing criteria



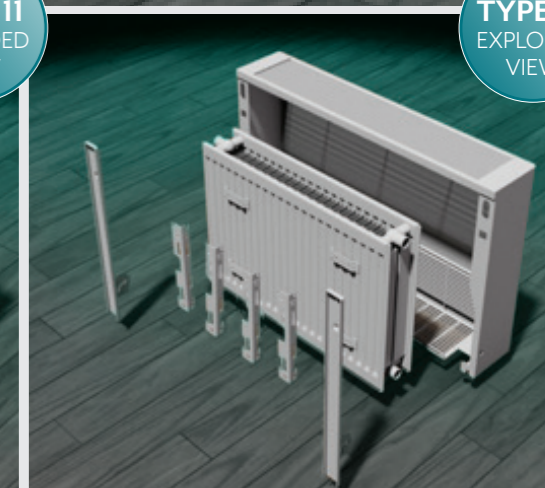
### FEATURES AND BENEFITS:

- The Ultra LST is available in 3 heights (500mm, 650mm and 800mm) and in eight lengths from 600mm to 2000mm wide, with the option of a plinth and a choice of 2 TRVs (external as standard).
- Internal Standard compact radiator EN442 certified including wall brackets.
- Two stage installation process meaning emitters can be initially installed and covers delivered to site only when required for second fix, reducing any storage on site and eliminating risk of damage.
- Casings can be retro fitted to existing radiator installations if necessary.
- New wipe clean case design with no sharp edges.
- "Easy Clean" facility where the casing Cover drops forward on fully supported hinge system allowing one-person easy access cleaning.
- Cover hinges are fully retractable allowing complete removal for deep cleaning.
- RAL 9016 robust 1.5mm single piece powder coated casing included with an antimicrobial coating.
- Fully compliant to NHS 'Safe' Hot Water And Surface Temperatures Health Guidance 1998 and HSE Health Services Information Sheet No.6 'Managing The Risks from Hot Water And Surfaces In Health & Social Care'.
- Secure locking system to prevent unauthorised access to the internal TRV.
- Surface temperature below 43°C at Dt50 80°C/60°C/20°C or 75°C/65°C/20°C.
- Universal internal capillary TRV capability.
- No need for a plinth, with front facing bottom grille set 50mm off the floor.
- One Single casing depth 130mm suits both T11 and T22 radiator types.
- Outputs certified and CE marked to EN442, independently tested by EN442 accredited test laboratory.
- High pressure capability 10 bar working pressure.
- 5 year warranty on casing and 10 year warranty on the emitter.
- Covers now supplied with heavy duty pencil proof bar grilles to maximise airflow, maximum aperture 7mm.
- All covers supplied with bottom grille to prevent access to the emitter in full compliance to NHS Estates Guidelines.
- Available with 1/2" BSP x 15mm angled tamper proof internal capillary TRV or external capillary TRV that can be fitted LH or RH with matching lock shield valve.

**TYPE 11**  
EXPLODED  
VIEW



**TYPE 22**  
EXPLODED  
VIEW



# OPTIONS

Ultra LST is available with a choice of internal and external thermostatic valves. These valves are unidirectional and must always be fitted to the flow side of the emitter.

The external control head consists of a 15mm angled valve fitted to the emitter inside the LST cover and linked by capillary tube to an external TRV head. This can be positioned on either side of the cover and emitter. The temperature head can be pre-set to the desired temperature and locked. These valves are unsuitable for single pipe systems.

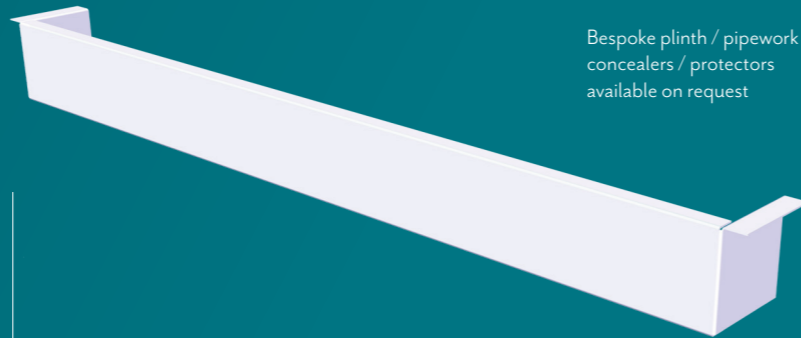
The internal control head consists of a 15mm angled valve body control head fitted to the emitter inside the cover. It features an internal capillary sensor that is attached to the underside of the cover to measure the inlet air temperature. The control head can be pre-set to the desired temperature and is tamper-proof.



**ACVK1**  
Lockable remote sensing with L/S



**ACVK2**  
Lockable internal sensing with L/S



Bespoke plinth / pipework concealers / protectors available on request

### LST Casing Options – Price on Application

**LST Heavy Duty 2mm casing**  
The Ultra LST is also available with a heavy duty 2mm casing for those high traffic areas where extra durability is required

**LST Super Heavy Duty 2.5mm casing**  
The LST Ultra can also be manufactured with a 2.5mm Super Heavy Duty casing for those installations where reinforced casing strength is paramount

**LST Anti-Corrosion**  
For areas of high humidity, the LST Ultra Anti Corrosion product is the ideal solution. The casing is finished with a Zintec coating to enable an anti-rust finish where required.

### Optional RAL Finishes Available

RAL 1013	Oyster White
RAL 1023	Traffic Yellow
RAL 3000	Flame Red
RAL 5002	Ultramarine Blue
RAL 7016	Anthracite Grey
RAL 7032	Pebble Grey
RAL 7035	Light Grey
RAL 8017	Chocolate Brown
RAL 9005	Jet Black

Cover Heights	500mm, 650mm, 800mm
Cover Depth	130mm
Cover Lengths	600mm, 800mm, 1000mm, 1200mm, 1400mm, 1600mm, 1800mm, 2000mm
Emitter Lengths	400mm, 600mm, 800mm, 1000mm, 1200mm, 1400mm, 1600mm, 1800mm
Emitter Type	Standard Compact Radiator 442 certified
Brackets	Wall brackets mounted on the short side (25mm – t22 special)
Connections	BOE (bottom opposite end), ½" BSP
Wall mounted	Minimum 50mm off the floor
Options	½" BSP x 15mm angled external capillary TRV kit / internal capillary TRV kit ½" BSP x 15mm angled lock shield valve Plinth lengths 600mm – 2000mm, 75mm deep
Vertical Options	2100 Height Lengths 400w 600w 800w Type 20

# TECHNICAL SPECIFICATIONS

## ULTRA LST COLLECTION

Product Code	Casing Height	Casing Length	Emitter Height	Emitter Length	T50k watts	BTU T50
650000	500	600	300	400	187	638
650001		800	300	600	281	959
650002		1000	300	800	374	1276
650003		1200	300	1000	468	1597
650004		1400	300	1200	562	1918
650005		1600	300	1400	655	2235
650006		1800	300	1600	749	2556
650007	2000	300	1800	842	2873	
650008	650	600	400	400	244	833
650009		800	400	600	366	1249
650010		1000	400	800	488	1665
650011		1200	400	1000	610	2081
650012		1400	400	1200	732	2498
650013		1600	400	1400	854	2914
650014		1800	400	1600	976	3330
650015	2000	400	1800	1098	3746	
650016	800	600	500	400	284	969
650017		800	500	600	426	1454
650018		1000	500	800	568	1938
650019		1200	500	1000	710	2423
650020		1400	500	1200	852	2907
650021		1600	500	1400	994	3392
650022		1800	500	1600	1136	3876
650023	2000	500	1800	1278	4361	

Product Code	Casing Height	Casing Length	Emitter Height	Emitter Length	T50k watts	BTU T50
650024	500	600	300	400	340	1160
650025		800	300	600	509	1737
650026		1000	300	800	678	2313
650027		1200	300	1000	848	2893
650028		1400	300	1200	1018	3473
650029		1600	300	1400	1187	4050
650030		1800	300	1600	1357	4630
650031	2000	300	1800	1526	5207	
650032	650	600	400	400	461	1573
650033		800	400	600	692	2361
650034		1000	400	800	922	3146
650035		1200	400	1000	1153	3934
650036		1400	400	1200	1384	4722
650037		1600	400	1400	1614	5507
650038		1800	400	1600	1845	6295
650039	2000	400	1800	2075	7080	
650040	800	600	500	400	560	1911
650041		800	500	600	840	2866
650042		1000	500	800	1120	3821
650043		1200	500	1000	1400	4777
650044		1400	500	1200	1680	5732
650045		1600	500	1400	1960	6688
650046		1800	500	1600	2240	7643
650047	2000	500	1800	2520	8598	

	Code	Plinth Height	Plinth Width
Plinth	LSTP06	100	600
	LSTP08	100	800
	LSTP10	100	1000
	LSTP12	100	1200
	LSTP14	100	1400
	LSTP16	100	1600
	LSTP18	100	1800
	LSTP20	100	2000

Internal Sensing Valve Kit 15mm inc Lockshield	ACVK2
2m Capillary Valve Kit 15mm Inc Lockshield	ACVK1

# TECHNICAL DIAGRAMS

**Dimensional information**  
Features Emitter, Cover and Optional Plinth

**Ultra LST 130mm depth case**  
Heat Emitter length = Case L- 200mm

