



HEIGHT: 800MM



HEIGHT: 1200MM



HEIGHT: 1800MM



Features and Benefits

- High heat output achieved by using 25mm bars
- Versatile, can be used on central heating or dual fuel systems
- Wide range of sizes to cater for all spaces

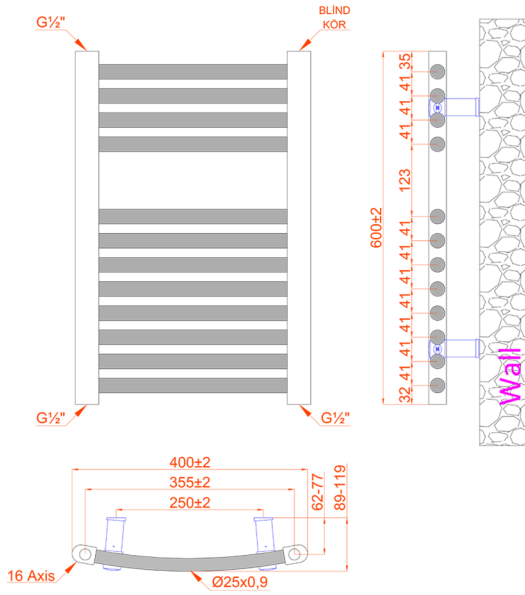
Specification

- Bar Size: 25mm
- Material: Steel
- Max Working Pressure: 10 bar
- Connections: ½"
- Warranty: 10 Year manufacturer
- All products tested in accordance with EN442

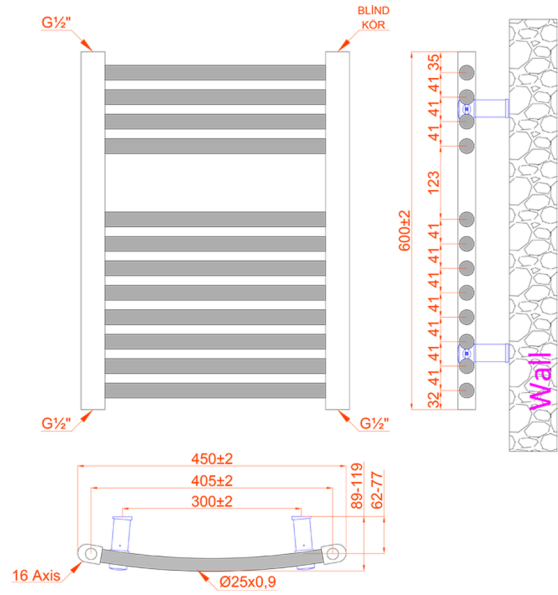
Product Code New	Height (mm)	Length (mm)	Depth (mm)	Pipe Centres	Output (Watts)	Output (BTUs)	Weight KG	Water Content Ltr
140036	600	400	65-88	355	182	621	4.4	2.86
140037	600	450	65-88	405	205	699	4.85	3.12
140038	600	500	65-88	455	228	778	5.8	3.37
140039	600	600	65-88	555	273	931	6.4	3.88
140040	800	400	65-88	355	274	935	6	3.95
140041	800	450	65-88	405	308	1051	6.7	4.31
140042	800	500	65-88	455	342	1167	7.1	4.67
140043	800	600	65-88	555	411	1402	7.9	5.39
140044	1000	400	65-88	355	321	1095	7.05	4.77
140045	1000	500	65-88	455	400	1365	8.5	5.61
140046	1000	600	65-88	555	481	1641	9.45	6.46
140047	1200	400	65-88	355	352	1201	9.3	5.59
140048	1200	450	65-88	405	396	1351	8.95	6.07
140049	1200	500	65-88	455	440	1501	9.95	6.56
140050	1200	600	65-88	550	528	1802	10.95	7.53
140051	1400	400	65-88	355	426	1454	9.8	6.68
140052	1400	450	65-88	405	479	1634	10.7	7.16
140053	1400	500	65-88	455	532	1815	11.4	7.86
140054	1400	600	65-88	555	639	2180	13.05	9.04
140055	1600	400	65-88	355	504	1720	11.65	7.63
140056	1600	450	65-88	405	569	1941	11.75	8.31
140057	1600	500	65-88	455	632	2156	12.75	8.98
140058	1600	600	65-88	555	760	2593	14.8	10.34
140059	1800	400	65-88	355	548	1870	13.6	8.72
140060	1800	450	65-88	405	617	2105	13.85	9.51
140061	1800	500	65-88	455	686	2341	14.1	10.29
140062	1800	600	65-88	555	823	2808	16.7	11.85



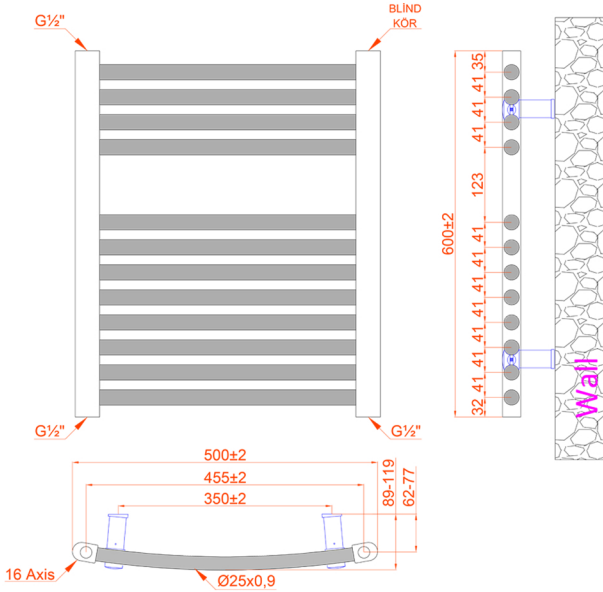
600MMX400MM



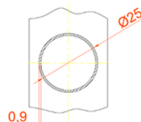
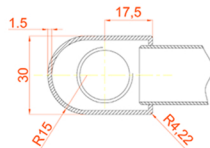
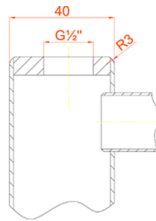
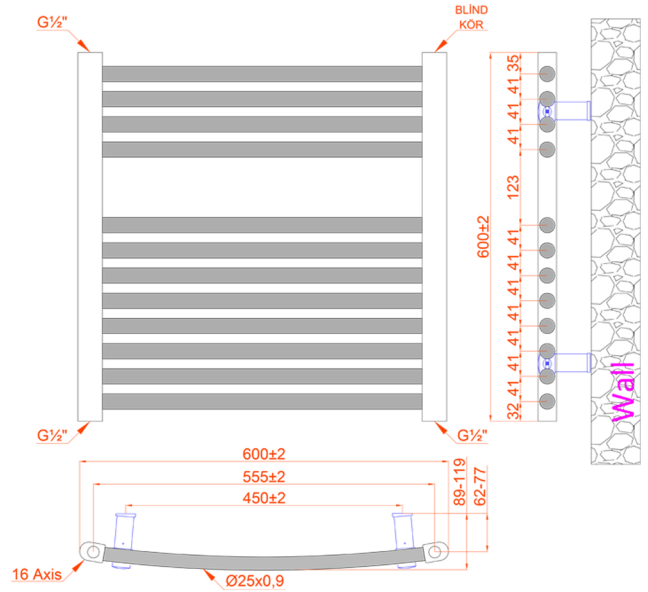
600MMX450MM



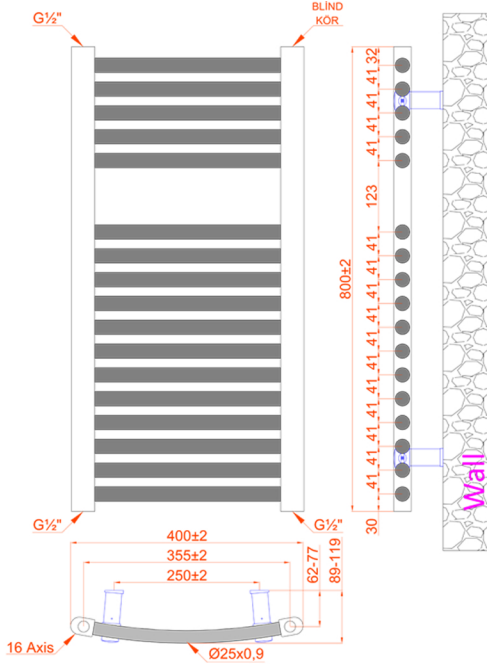
600MMX500MM



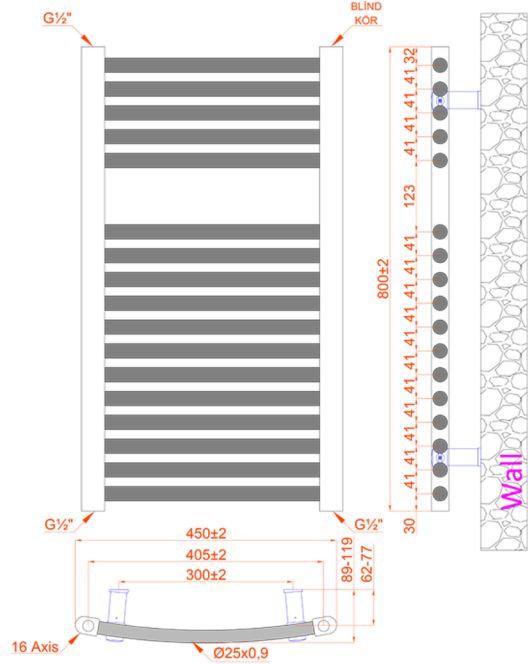
600MMX600MM



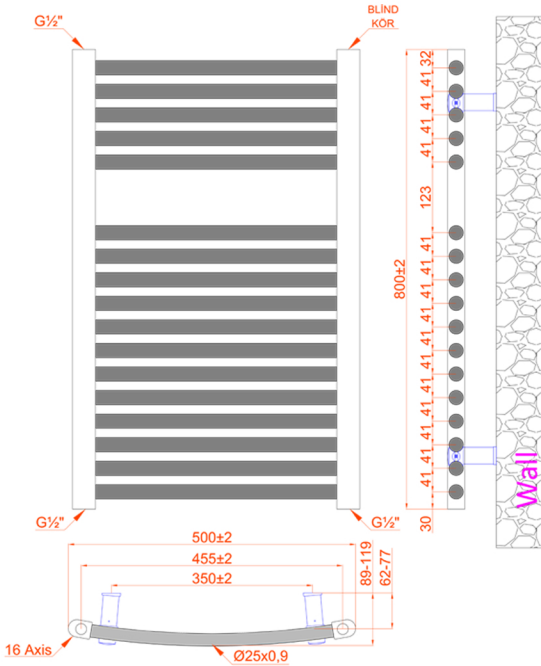
800MMX400MM



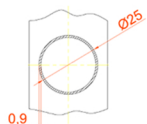
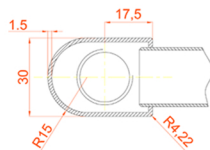
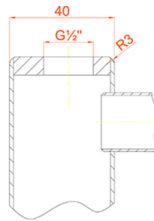
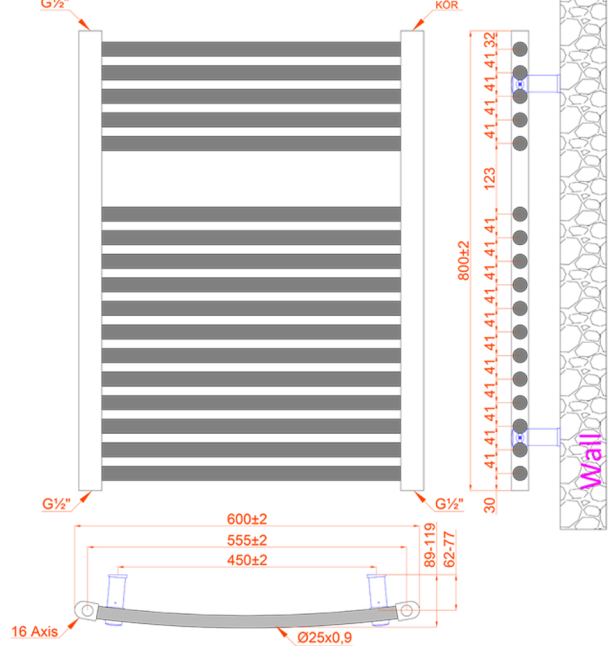
800MMX450MM



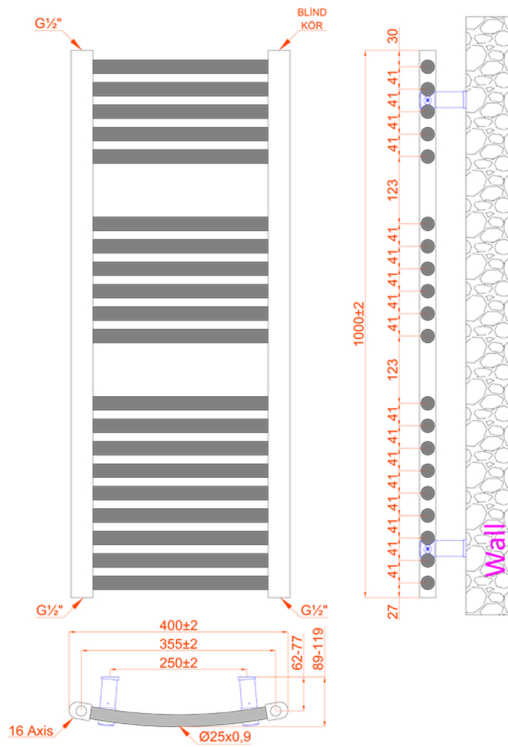
800MMX500MM



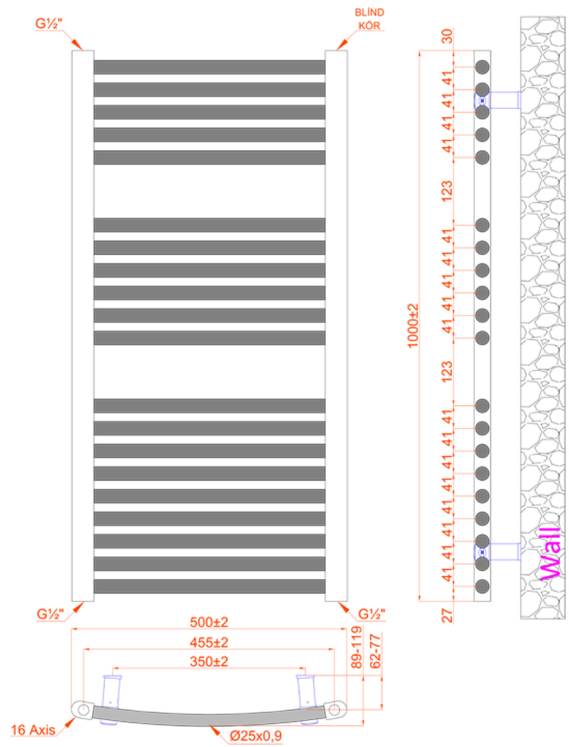
800MMX600MM



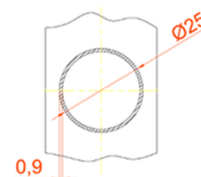
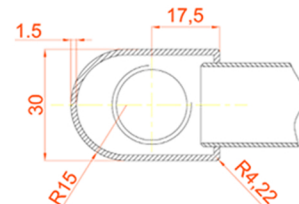
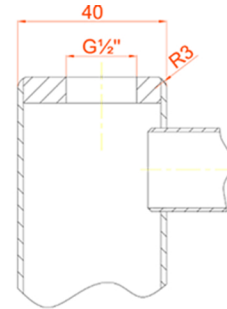
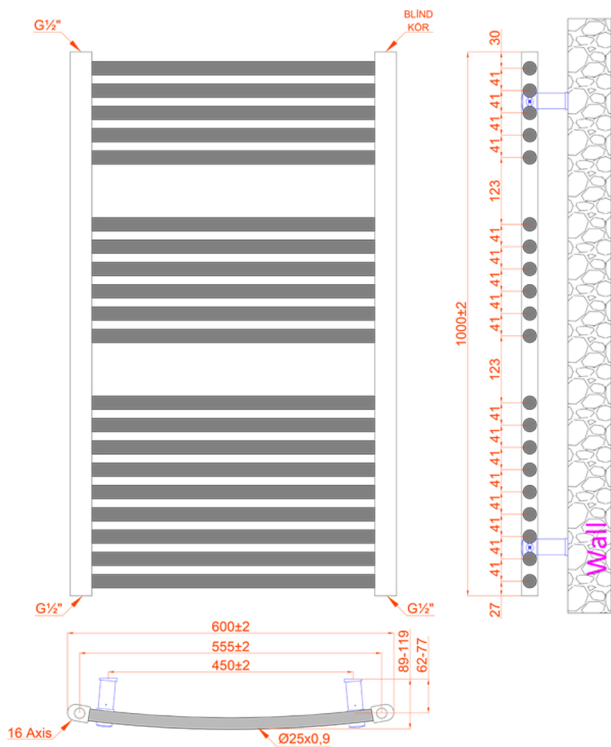
1000MMX400MM



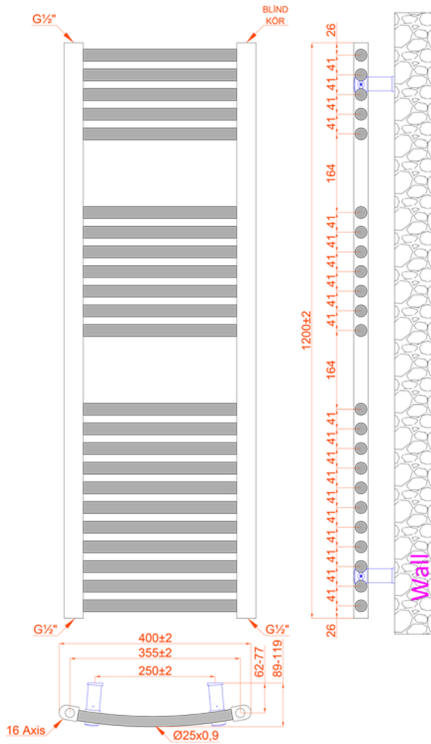
1000MMX500MM



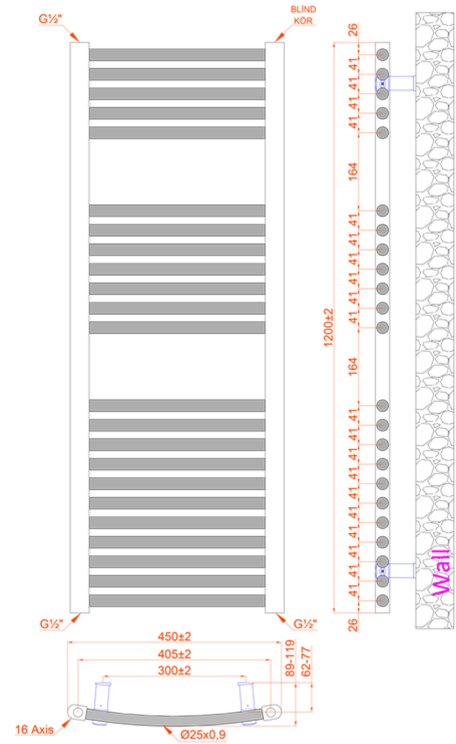
1000MMX600MM



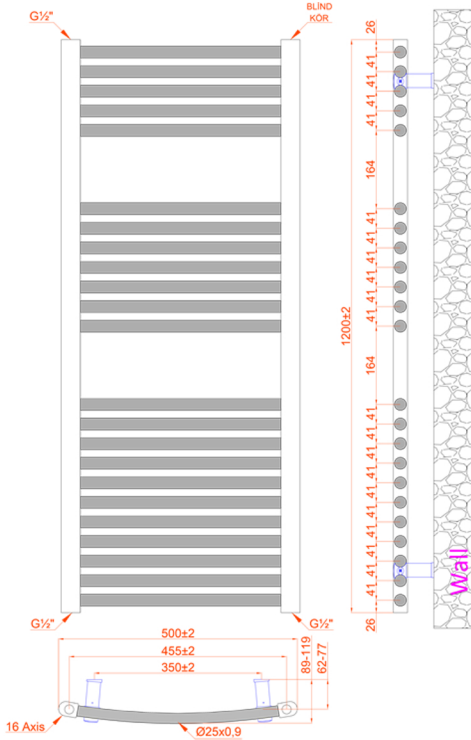
1200MMX400MM



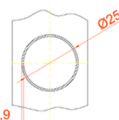
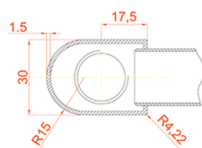
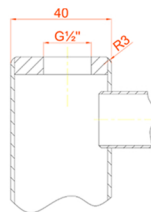
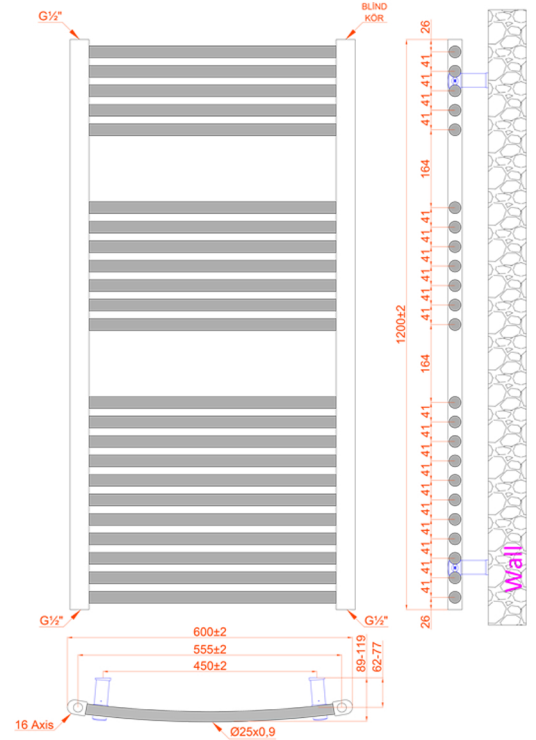
1200MMX450MM



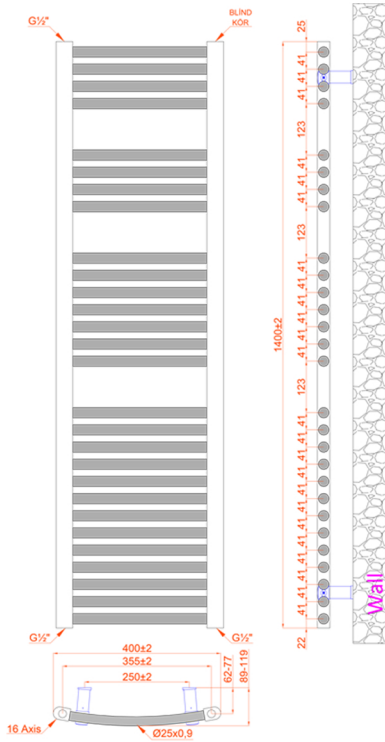
1200MMX500MM



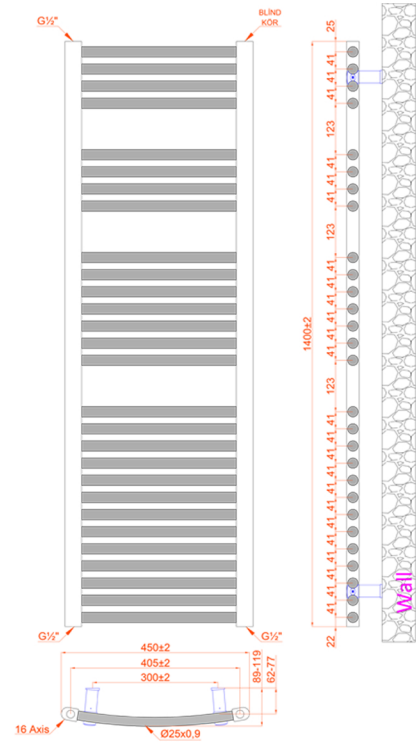
1200MMX600MM



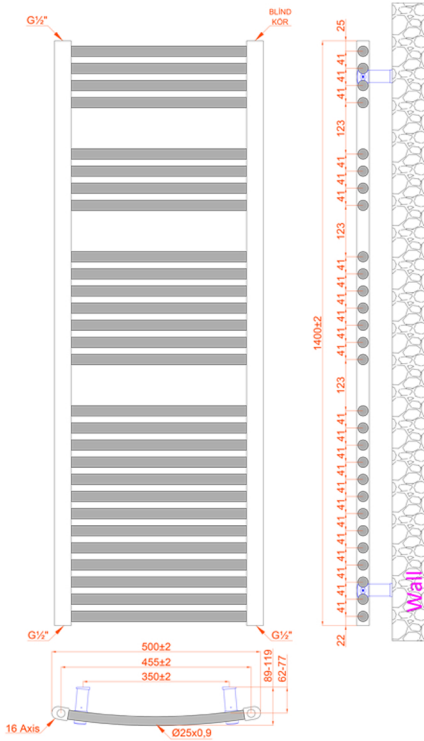
1400MMX400MM



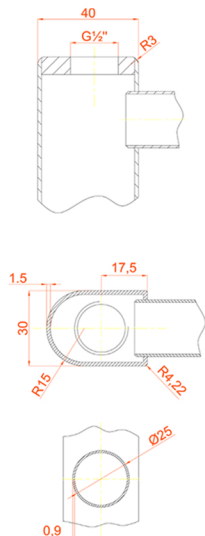
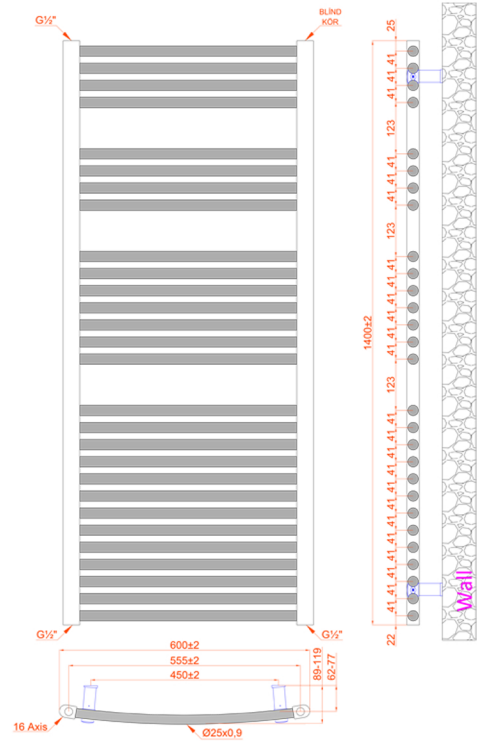
1400MMX450MM



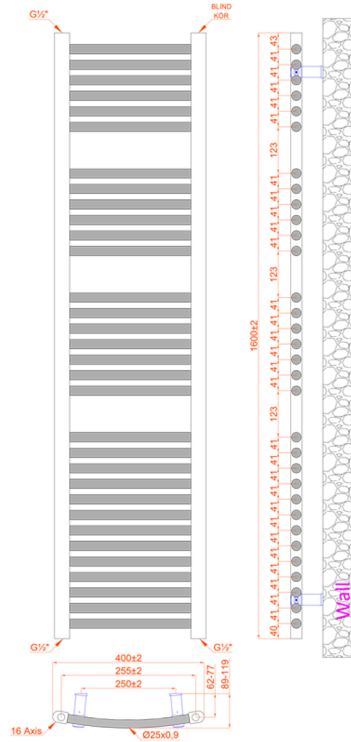
1400MMX500MM



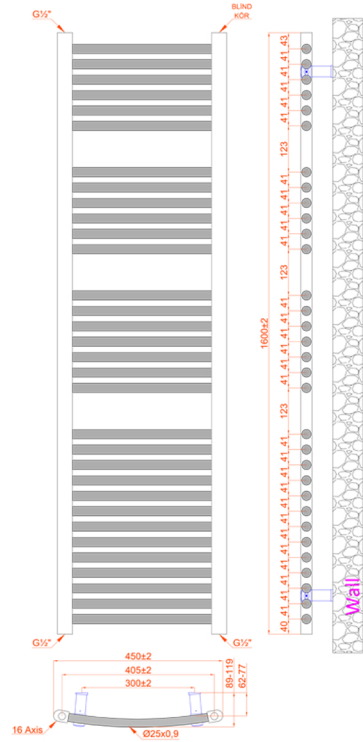
1400MMX600MM



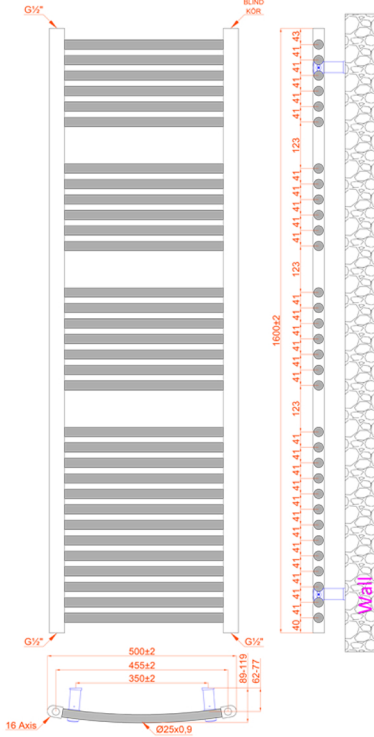
1600MMX400MM



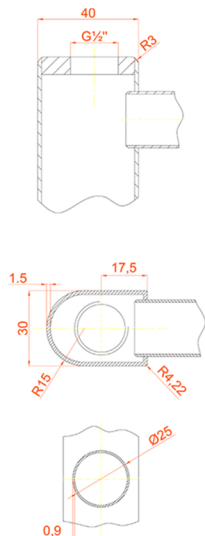
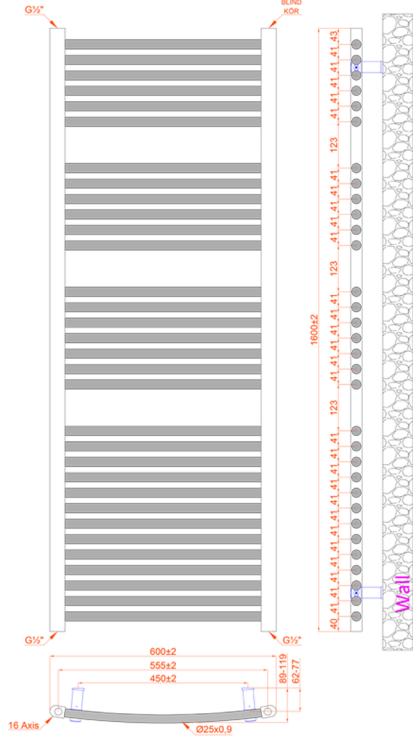
1600MMX450MM



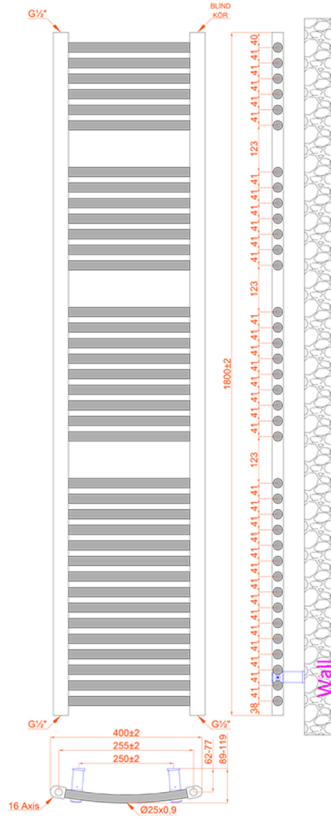
1600MMX500MM



1600MMX600MM



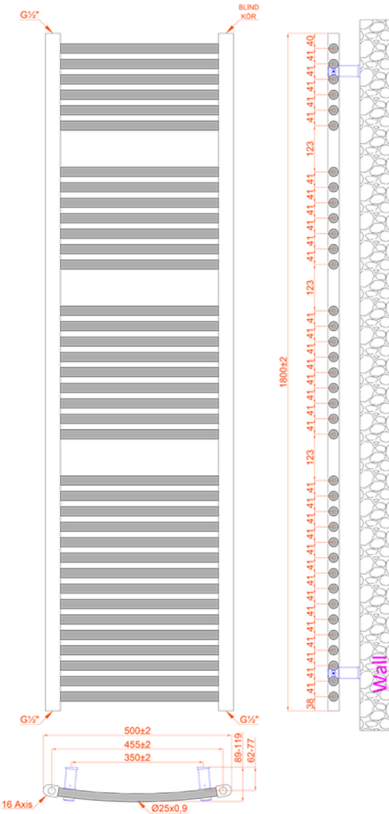
1800MMX400MM



1800MMX450MM



1800MMX500MM



1800MMX600MM

