



HEIGHT: 800MM



HEIGHT: 1200MM



HEIGHT: 1600MM



Features and Benefits

- High heat output achieved by using 25mm bars
- Versatile, can be used on central heating or dual fuel systems
- Wide range of sizes to cater for all spaces

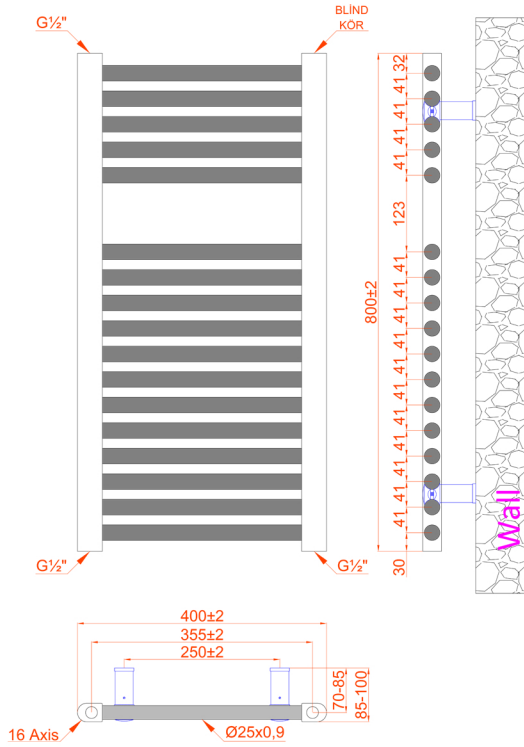
Specification

- Bar Size: 25mm
- Material: Steel
- Max Working Pressure: 10 bar
- Connections: ½"
- Warranty: 10 Year manufacturer
- All products tested in accordance with EN442

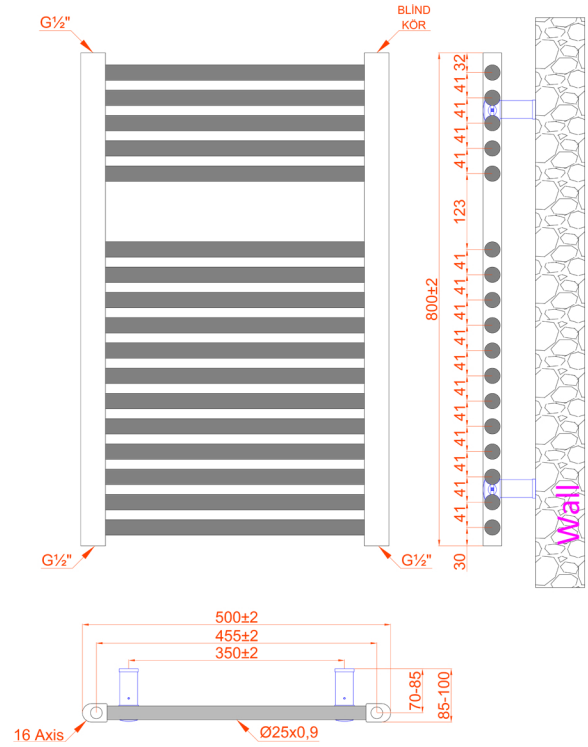
Product Code New	Height (mm)	Length (mm)	Depth (mm)	Pipe Centres	Output (Watts)	Output (BTUs)	Weight KG	Water Content Ltr
170001	800	400	65-88	355	316	1078	6	3.95
170002	800	500	65-88	455	383	1307	7.1	4.67
170003	800	600	65-88	555	451	1539	7.9	5.39
170004	1200	400	65-88	355	471	1607	9.3	5.59
170005	1200	500	65-88	455	572	1952	9.95	6.56
170006	1200	600	65-88	555	673	2296	10.95	7.53
170007	1600	400	65-88	355	633	2160	11.65	7.63
170008	1600	500	65-88	455	768	2620	12.75	8.98
170009	1600	600	65-88	555	903	3081	14.8	10.34



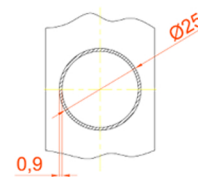
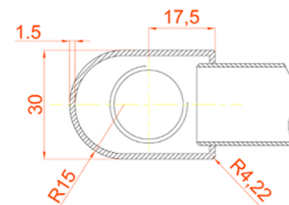
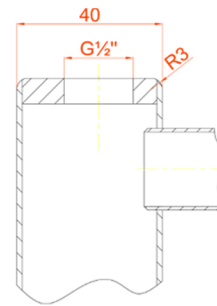
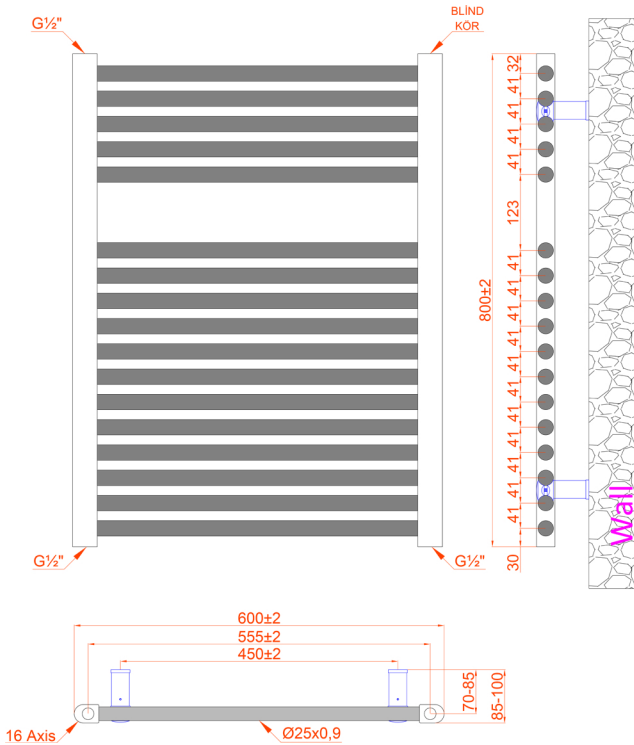
800MMX400MM



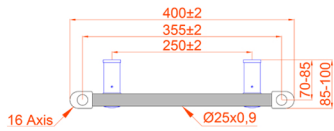
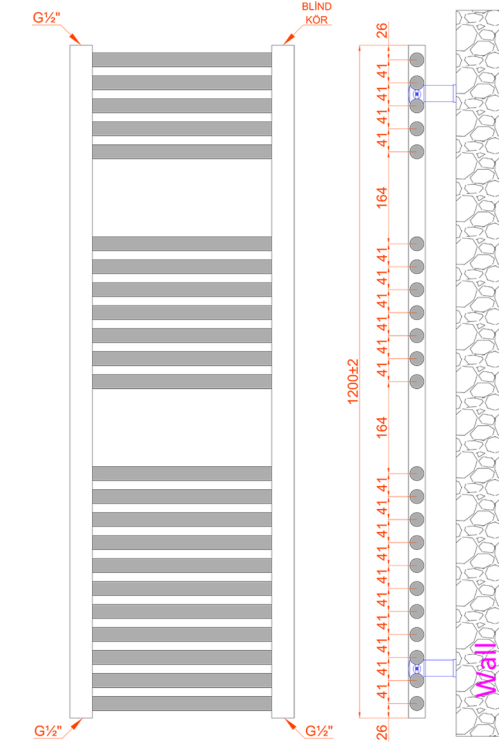
800MMX500MM



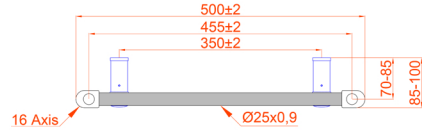
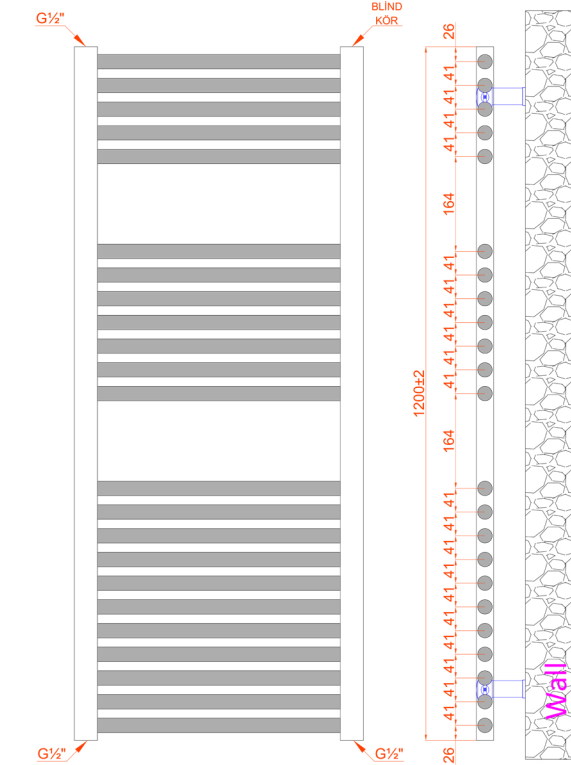
800MMX600MM



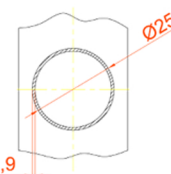
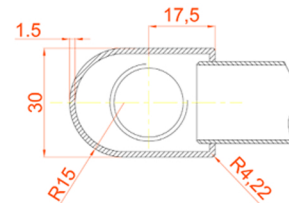
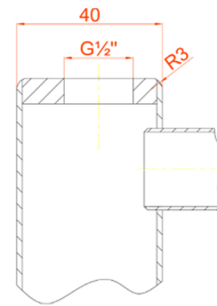
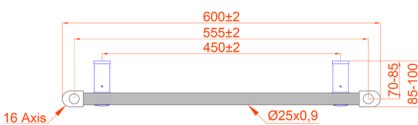
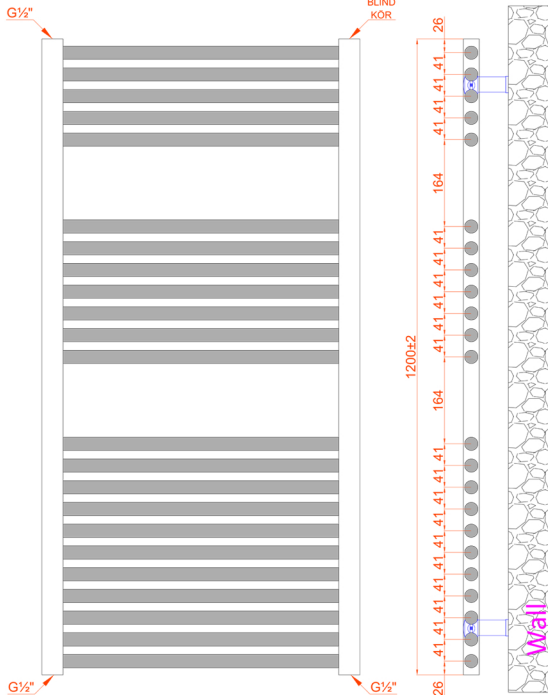
1200MMX400MM



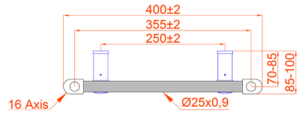
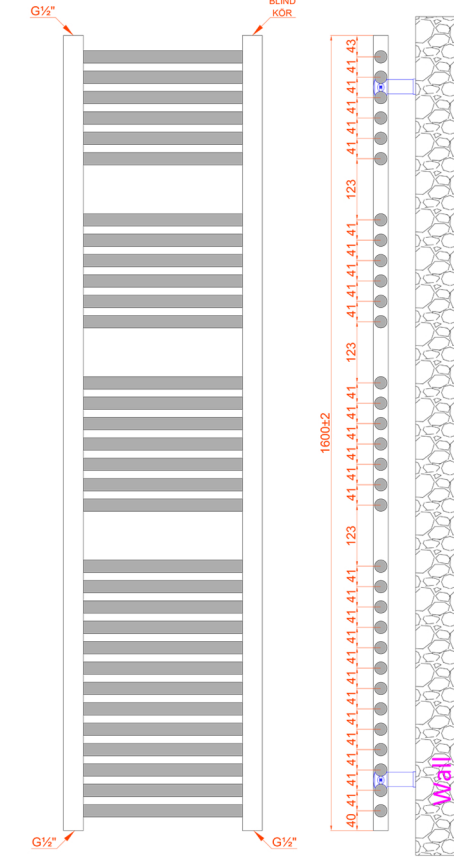
1200MMX500MM



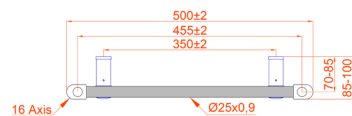
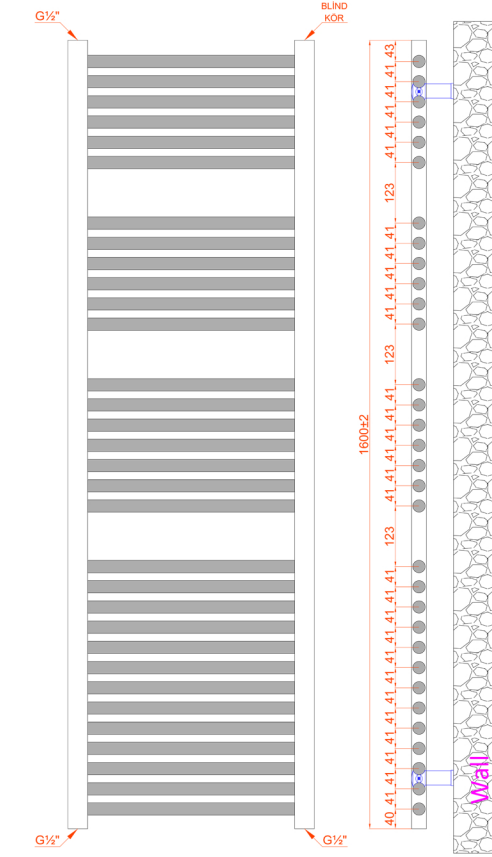
1200MMX600MM



1600MMX400MM



1600MMX500MM



1600MMX600MM

