



HEIGHT: 800MM



HEIGHT: 1200MM



HEIGHT: 1600MM



Specification

- Bar Size: 22mm
- Material: Steel
- Max Working Pressure: 10 Bar
- Connection: 1/2"
- Warranty: 5 Year Manufacture
- All products tested in accordance with EN442

Features and Benefits

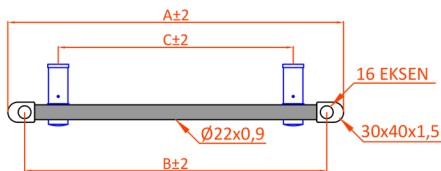
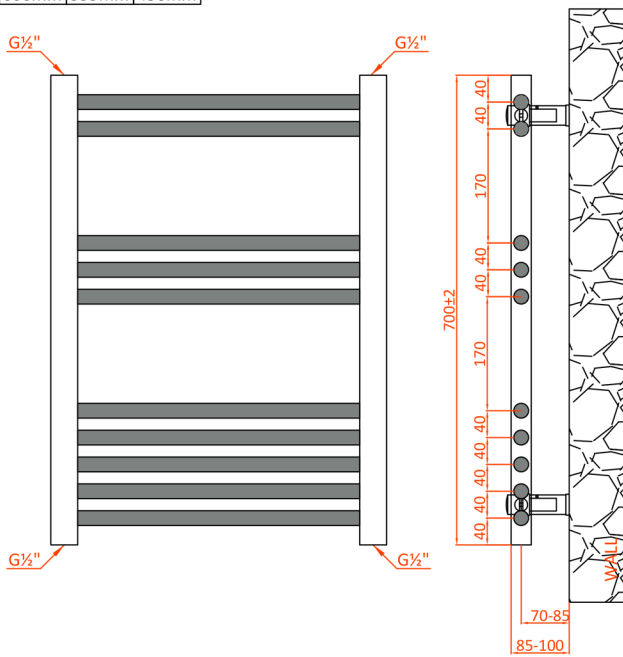
- Great heat output and stylish finish
- Versatile, can be used on central heating or dual fuel systems
- Wide range of sizes to cater for all spaces

| Product Code New | Height (mm) | Length (mm) | Depth (mm) | Pipe Centres | Output (Watts) | Output (BTUs) | Weight KG |
|------------------|-------------|-------------|------------|--------------|----------------|---------------|-----------|
| 180001 | 700 | 400 | 85-100 | 350 | 145 | 496 | 4.9 |
| 180002 | 700 | 500 | 85-100 | 450 | 170 | 581 | 5.1 |
| 180003 | 700 | 600 | 85-100 | 550 | 195 | 666 | 5.75 |
| 180004 | 1200 | 400 | 85-100 | 350 | 248 | 845 | 7.5 |
| 180005 | 1200 | 500 | 85-100 | 450 | 291 | 991 | 8.1 |
| 180006 | 1200 | 600 | 85-100 | 550 | 333 | 1136 | 12.15 |
| 180007 | 1600 | 400 | 85-100 | 350 | 326 | 1111 | 9.1 |
| 180008 | 1600 | 500 | 85-100 | 450 | 380 | 1297 | 10.6 |
| 180009 | 1600 | 600 | 85-100 | 550 | 436 | 1485 | 11.1 |



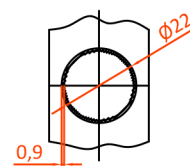
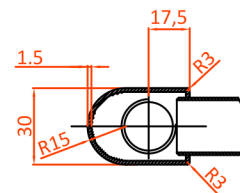
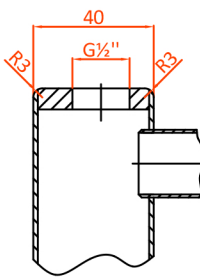
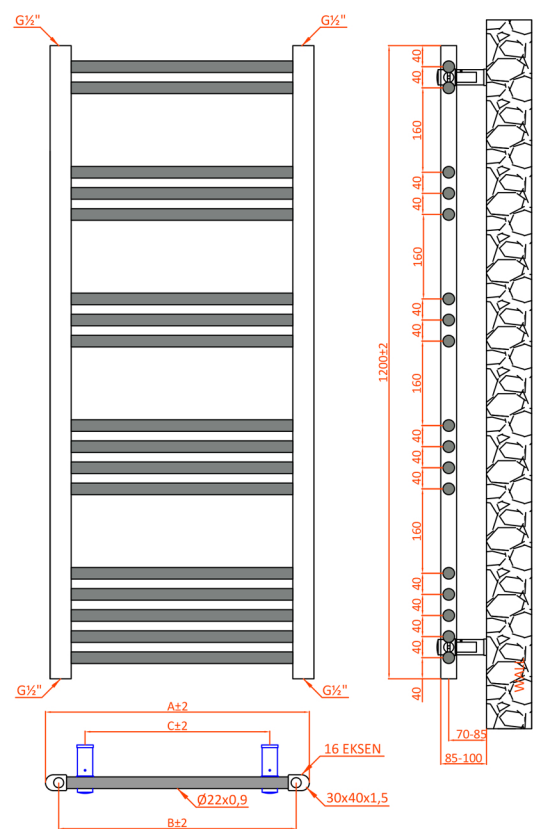
| A±2 | B±2 | C±2 |
|-------|-------|-------|
| 400mm | 355mm | 250mm |
| 500mm | 455mm | 350mm |
| 600mm | 555mm | 450mm |

HEIGHT: 700MM



| A±2 | B±2 | C±2 |
|-------|-------|-------|
| 400mm | 355mm | 250mm |
| 500mm | 455mm | 350mm |
| 600mm | 555mm | 450mm |

HEIGHT: 1200MM



| A±2 | B±2 | C±2 |
|-------|-------|-------|
| 400mm | 355mm | 250mm |
| 500mm | 455mm | 350mm |
| 600mm | 555mm | 450mm |

HEIGHT: 1600MM

